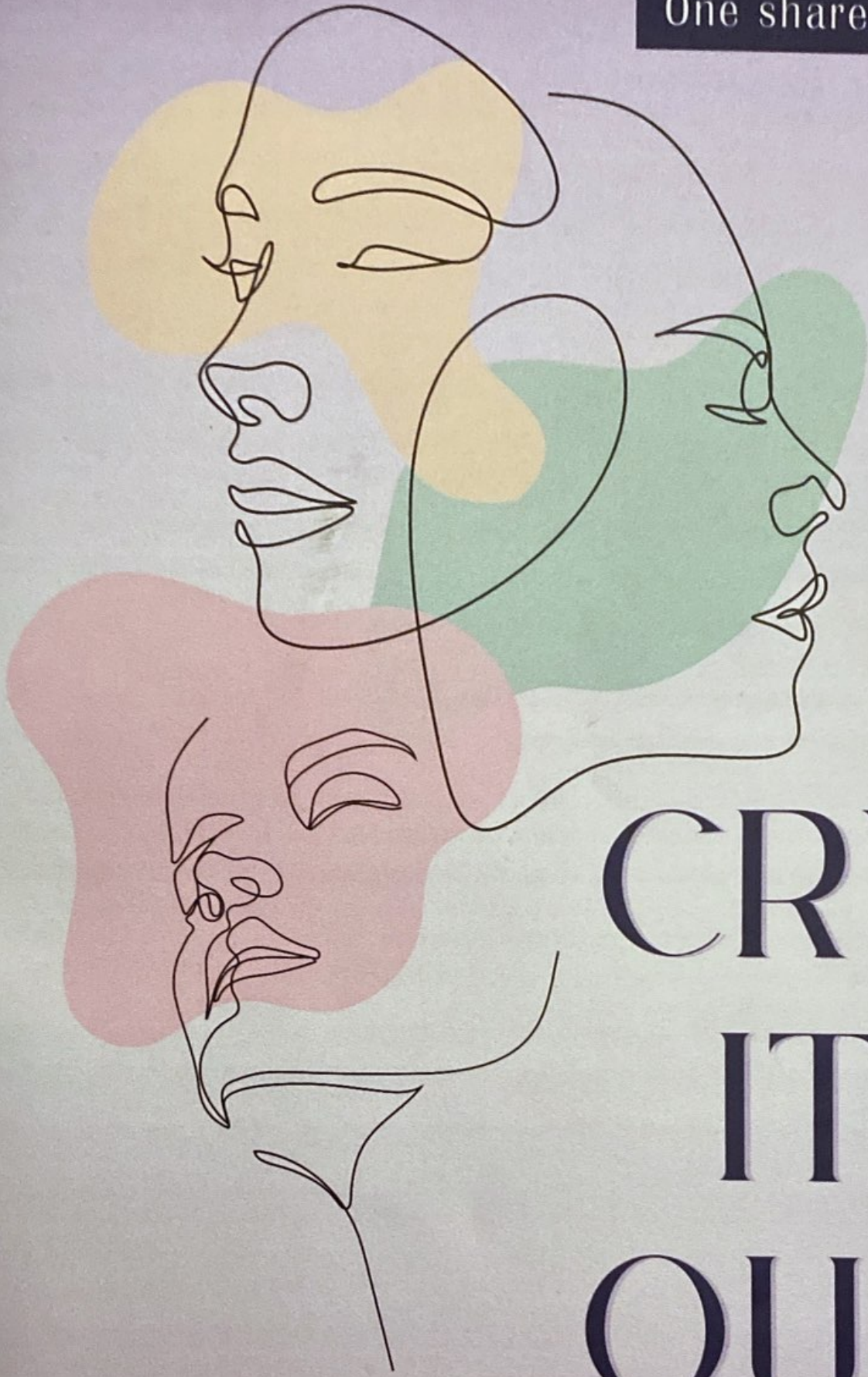


Three new mothers.
Three different backgrounds.
One shared struggle.



CRY IT OUT

MOXIE
Theatre

A PLAY BY **MOLLY SMITH METZLER**

DIRECTED BY **VANESSA DURON**

AUG 13 - SEP 10, 2023

A MESSAGE FOR OUR AUDIENCE

Dear MOXIE Patrons,

It is my deepest honor to welcome you to my first season as Executive Artistic Director. It is with a heart full of anticipation that we present you with tales that promise to ignite your imagination and are a testament to the Guts, Resilience, Independence, and Tenacity that exist within all of us.

As MOXIE's new artistic leader, I am thrilled to unveil a season that celebrates diversity in storytelling. Season 19 will transport you to different worlds, each brimming with their own unique set of emotions and experiences. We have embarked on this journey with unwavering dedication, as we believe that the power of theatre lies in its ability to foster connection, empathy, and introspection.

With our opening act, *Cry It Out*, we invite you to join us on an exploration of human relationships, vulnerability, and the ever-evolving tapestry of life. And then stay with us, as our season unfolds with narratives that traverse the landscapes of the human heart. From the streets of a bustling city to the intimate corners of a troubled mind, each production has been carefully curated to spark conversation, provoke thought, and ultimately leave an indelible mark on your journey as a theatergoer.

We extend our deepest gratitude to you, our cherished audience, for being an integral part of this artistic voyage. Your presence and support are the lifeblood that breathes vitality into the stage. Whether you're a longtime patron or discovering the magic of theatre for the first time, we invite you to immerse yourself in the captivating world we have crafted for you.

Thank you for sharing in our passion, our vision, and our love for the arts. Thank you for having *moxie*!

With artistic fervor,

Desireé Clarke Miller, Executive Artistic Director

See the back of this program for details on the upcoming shows and subscription opportunities.

CRY IT OUT

by Molly Smith Metzler

Directed by Vanessa Duron

CAST

Jessie

Lina

Mitchell

Adrienne

Baby voice

Katee Drysdale

Kylie Young

Alex Guzman

Leah Morgan

Nadia Aguilar-Ames

CREATIVE AND TECHNICAL TEAM

Stage Manager

Scenic Designer

Costume Designer

Lighting Designers

Sound Designer

Props Designer

Technical Director

Assistant Stage Manager

Scenic Artist

Dialect Coach

Production Manager

Megan Aguilar-Ames

Alyssa Kane

Carmen Amon

Sierra Shreves & Colby Freel

Roselle Angeline Castro

Rai Feltmann

Robert Malave

Lauren Guiso

Julie Lorenz

Sean Spann

Megan Aguilar-Ames

TIME & PLACE Jessie's backyard in Manorhaven. It's been a long, horrible winter. It's almost spring, but not yet. This year.

Run time 90 minutes. No intermission.
Please note that the show contains the use of haze.

director's note

Cry It Out examines the intricacies of motherhood in a very real way. As women we tend to keep so many things bottled up in the name of image. We are often dismissed and told we do not feel what we feel, and if we do we should not talk about it, it isn't proper. This play does not shy away from issues that women often face but feel they can't talk about and is written beautifully.

I love stories that make audiences question and think on a deeper level, this is what attracted me to this play. I'm excited to bring these characters to MOXIE's stage. They are raw and real, and I hope you will fall in love with them the way I did.

Vanessa Duron, MOXIE's Associate Artistic Director

the world of the play

We are in suburban Long Island, in the city of **Port Washington**.

Port Washington is an affluent, sleepy city with excellent public schools. Commuters are at Penn Station in just 35 minutes on the LIRR, so it's a very popular destination for New Yorkers who have families and want to rent/buy bigger homes.

Port Washington is comprised of many small villages. This play takes place in the village of **Manorhaven**, which is directly on the ocean, heavily populated, and, depending on the block, either middle-class or quite rundown. This block is somewhere in between.

The streets of Manorhaven are crammed with two-family duplexes, some brand new and flashy, some old and decrepit. The new ones mostly have Manhattan-transplants living in them; the decrepit ones mostly have "Lifers" living in them—people who have been renting for generations (sometimes under Section 8 housing codes.) Accordingly, there's a lot of socioeconomic diversity here.

Manorhaven also abuts one of the wealthiest neighborhoods in the whole country, Sands Point, which is up on a cliff literally looking down over Manorhaven. A bunch of NY Yankees have houses up there, and it's the model for West Egg in *The Great Gatsby*. Just crazy huge wealth.

Interestingly, the same school bus takes the Manorhaven kids and the Sands Points kids to the same excellent public school in September.

the playwright



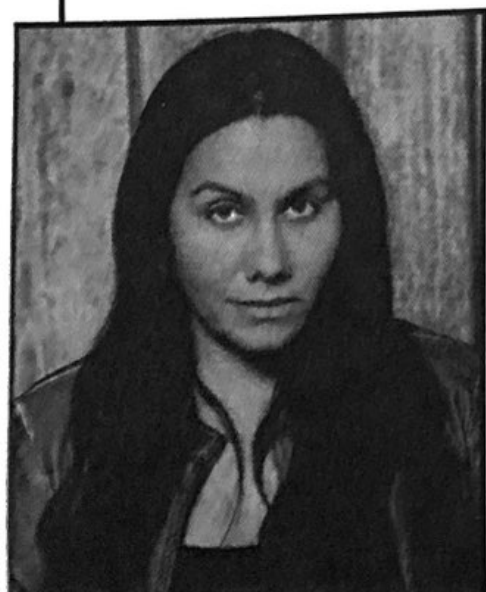
MOLLY SMITH METZLER

she/her is an award-winning playwright and screenwriter from Kingston, N.Y. She is the creator and showrunner of the Netflix limited series *Maid*, which spent 13 weeks on the top-10 list and won the Writers Guild of America Award for Outstanding Writing of a Limited Series-Adapted Long Form. *Maid* was also named a "TV Program of the Year" by the American Film Institute and received award nominations from The Golden

Globes, SAG, the Critics' Choice Awards, NAACP, and more.

Metzler's plays, including *Cry it Out*, *Elemeno Pea*, *The May Queen*, *Carve*, *Close Up Space* and *Training Wisteria*, have been produced at Manhattan Theatre Club, Humana Festival/Actors Theatre of Louisville, South Coast Repertory, Northlight Theatre, Studio Theatre (DC), Detroit Public Theatre, City Theatre (Pittsburg), Geva Theatre Center, Chautauqua Theater Company and many more. Her play *Cry it Out* won the Los Angeles Drama Critics Circle Award for Outstanding Playwriting (2018) and the Steinberg/ATCA New Play Award Citation (2018). Metzler is a proud alumna of SUNY Geneseo, Boston University, New York University's Tisch School of the Arts and the Juilliard School, where she was a two-time recipient of the Lecomte du Nouy Prize from Lincoln Center. She lives in Los Angeles with her tiny family and giant dog.

the director



VANESSA DURON

she/her is a local San Diego actor/director/writer/teaching artist and the Associate Artistic Director at MOXIE Theatre. She graduated from San Diego State University with a BA in Theatre. Besides MOXIE, Vanessa has worked as an artist at The Old Globe, La Jolla Playhouse, and TuYo Theatre. She's both performed and directed at the San Diego County Fair and has written and acted for an international theatre in Lima, Peru, Teatro Taripay Pacha. Vanessa is a

strong advocate for mental illness awareness, and BIPOC and queer theatre, and is honored to be part of these communities and tell these stories.

the cast



KATEE DRYSDALE (JESSIE)

she/her is a born and raised San Diego actor and holds a BA in Acting from Sonoma State University. She is incredibly grateful to be debuting at MOXIE. Previous credits include: Bella in *Lost in Yonkers* (Scripps Ranch Theatre), Varya/Dunyasha/Anyas u/s in *The Cherry Orchard* (North Coast Repertory), Patricia in *The Taming* (Scripps Ranch Theatre), Viola in *Twelfth Night* (Sonoma State University), and Melody in *Bad Jews* (Left Edge).



KYLIE YOUNG (LINA)

she/her graduated from UCSD with a BA in Theatre. Some of her favorite roles include: Katherine in *The Taming* and Miss Wilkinson in *Move Over Mrs. Markham* (Scripps Ranch Theatre), Laker Girl in *Spamalot* (Welk Theatre), Megan in *Puffs* (Tenth Avenue Arts), and Dora Bailey/ensemble in *Singin' in the Rain* (New Village Arts). Follow her on Instagram and TikTok @strangesparkles



ALEX GUZMAN (MITCHELL)

he/him is delighted to be returning to MOXIE after *Sapience* and *ENRON*. Other favorite acting credits include: *I Hate Hamlet*, *Move Over, Mrs. Markham* (Scripps Ranch Theatre), *Native Gardens* (The Old Globe), *Bachelorette* (Backyard Renaissance), *Homos, or everyone in America* (Diversi-ary Theatre), *Awake and Sing*, *Around the World in 80 Days* (New Village Arts), *The Normal Heart*, *Lydia* (ion Theatre), *Seminar*, *The Taming of the Shrew* (InnerMission Productions), *The Lion in Winter* (Moonlight Stage Productions). IG: @_alexguzman_

COVID-19 SAFETY



MOXIE is proud to provide opportunities for everyone to feel safe in our space. During our First Sunday *Masked Matinee* masks are required indoors at all times. Masks are encouraged for all other performances. Details and updated policies at moxietheatre.com.



LEAH MORGAN (ADRIENNE)

she/her was born in Westford, Vermont to a large military family that moved from coast to coast. Leah was a scholarship student at CalArts before moving to NYC to pursue a professional dance career, dancing with Alvin Ailey and the American Dance Festival. Leah was a casting assistant on a Stephen King feature adaptation of *The Boogeyman* in 2021 under 21 Laps Entertainment. Leah studied acting under Michael Pieper at Second City and has found a career in acting, screenwriting, and voiceover work. Leah performed at the Second City Chicago in June of 2023 and had her sketch comedy *Punaholics Anonymous* performed live on stage.



NADIA AGUILAR-AMES (VOICE)

she/her is excited to be making her theatre debut here at MOXIE. She would like to thank her mama for driving her to rehearsals and recording her cries of distress, and her papa for all the cuddles and diaper changes. She would also like to thank her MOXIE aunties for playing with her, and especially Tia Vanessa for casting her in this incredible breakout role.

ASL Interpreted
Performance

Sunday, Sept 3 @ 2pm

In partnership with



**DEAF
COMMUNITY
SERVICES**



Opening Night Sponsor

Delicious dessert and coffee shop
down the street from MOXIE at
6353 El Cajon Blvd, Ste.132
www.westcoastconfection.com

Bring a group of 10 or more to MOXIE and save 25%!

Contact our Box Office for details.

(858) 598-7620 | boxoffice@moxietheatre.com

the creative & technical team

MEGAN AGUILAR-AMES (STAGE MANAGER)

she/her is excited to be back stage managing at MOXIE Theatre! Previous MOXIE credits include: *Mother of the Maid*, *Red Bike*, *Dance Nation*, *HERLAND*, *Voyeurs De Venus*, and *The Madres*. Other theatres Megan has stage managed at include *Diversionsary*, *Scripps Ranch Theatre*, *The Old Globe/University of San Diego Shiley Graduate Theatre Program*, *University of San Diego Undergraduate Program*, *La Jolla Playhouse WoW Festival*. Megan is also MOXIE Theatre's Production Manager and is so excited to be working with an incredible team. She received a BA in Design Technology for Theatre with an emphasis in arts management from San Diego State University, and has worked as a production assistant at *The Old Globe* and *La Jolla Playhouse*. She is looking forward to growing her abilities at MOXIE in this new role.

ALYSSA KANE (SCENIC DESIGNER)

she/her is excited to be working with MOXIE once again! She works full-time in scenic design, props design, and scenic painting. Recent projects include *Pippin* (North Coast Rep), *Head Over Heels* (Diversionsary), *Lost in Yonkers* (Scripps Ranch Theatre), *Sharon* (Cygnet), *The Ferryman* (New Village Arts), *Ripped* (Loud Fridge), and *Yellow Wallpaper* (Write Out Loud). Alyssa enjoys surfing, reading, and snuggling with her two kitties, Harold and Maude. Portfolio: AlyssaKaneScenicDesign.com

CARMEN AMON (COSTUME DESIGNER)

she/they is excited to return to MOXIE Theatre. She is a proud Queer Chicx Costume Designer in the Greater San Diego area. She has been working professionally as a Freelance Costume Designer since 2016. She graduated the same year with a Bachelor's Degree in Theatre with an Emphasis in Costume Design from San Diego State University. Her designs have been featured at *The Old Globe's Globe for All*, *La Jolla Playhouse's POP Tour*, *San Diego Repertory Theatre*, *Passage Theatre* in New Jersey and *Urbanite Theatre* in Florida, *Junior Theatre*, *San Diego State University*, *Southwestern College*, and *Pacific Ridge School*.

SIERRA SHREVES (LIGHTING DESIGNER)

they/them is thrilled to be returning to MOXIE for *Cry It Out* as a lighting designer alongside Colby Freel. You may have seen their work at MOXIE last year in *The Pleasure Trials*. They are in their final semester at SDSU in pursuit of an MFA in Design and Technology and are excited for the next

stages of their career. Sierra is abundantly excited to be working with MOXIE again and hopes you enjoy *Cry It Out*.

COLBY FREEL (LIGHTING DESIGNER)

he/him is a lighting designer and storyteller with experience working in all spheres of lighting including plays, musicals, ballet, contemporary dance, concerts, and architecture. Colby's most recent projects include the 2022 Hemsley Lighting Internship and Lighting Design for *Present Laughter* at Cygnet Theatre. Colby is a recent graduate of the MFA. in Design and Technical Theatre program at San Diego State University. He currently works throughout Southern California on a range of theatrical and architectural projects.

ROSELLE ANGELINE CASTRO (SOUND DESIGNER)

she/her is a sound design artist, singer/songwriter, and performer interested in the effect theatre has on social norms through music and storytelling. Along with performing her own original music, she took classical piano lessons for eight years (including studies regarding music theory), dancing for three years, and acting for five years. Roselle's vocal style ranges from pop, jazz, R&B, and Broadway. Credits: *Mary Poppins* (Vocal Director), *Rocky Horror Picture Show* (Co-Director/Vocal Director), *Heathers: The Musical* (Vocal Director/Band Leader), *blu* (Assistant Sound Designer), Wagner New Play Festival *One Acts* (Associative Sound Design/Sound Board Operator), *Spring Awakening* (Thea), *Pippin* (Leading Player), *Songs For a New World* (Woman 2). TV and Film: *Hiraya* (Cheryl-Ann).

RAI FELTMANN (PROPS DESIGNER)

she/they graduated from the Conservatory of Theatre Arts at Webster University. She has worked as a Props Artisan, Assistant Props Master, and Props Master at various theaters including Stages St. Louis, Cleveland Play House, Pennsylvania Shakespeare Festival, and Cortland Repertory Theater. She is currently the Lead Properties Artisan at La Jolla Playhouse. She would like to thank Megan for this wonderful opportunity and her family for their continued support.

LAUREN GUISO (ASSISTANT STAGE MANAGER)

she/her is thrilled to be making her debut at MOXIE as Assistant Stage Manager on *Cry It Out*. She recently graduated from UCSD with a BA in Theatre. UCSD credits: *BOXED* (PSM), *ROT* (PSM), *Dance Nation* (SM Swing), *Limp Wrist On The Lever* (ASM), *A Chorus Line* (ASM). She is excited to be returning to MOXIE in January as the Stage Manager on *CLYDE's!*