



California Center for the Arts, Escondido

presents

# BOTTLE SHOCK!

THE MUSICAL

Music & Lyrics by **CHARLES VINCENT BURWELL**

Book, Lyrics & Additional Music by **JAMES D. SASSER**

Based on the movie "Bottle Shock"

story by Ross Schwartz & Lannette Pabon and Jody Savin & Randall Miller,  
screenplay by Jody Savin & Randall Miller and Ross Schwartz

Developed with support from

The California Center the Arts, Escondido, NAMT's Frank Young Fund for New Musicals, Forestburgh Playhouse,  
The Napa Valley Film Festival, FOGG Theatre Company, and The Frank & Eva Buck Foundation

starring

**LOUIS PARDO · T.J. MANNIX · PATRICK ORTIZ · WILL RIDDLE**  
**EMMA DEGERSTEDT · TAYLOR RENEE HENDERSON**

with

**MICHAEL CAVINDER · LIBBY JOHNSTON · CHASE LOWARY · JONAH MEYER · JOEY MICELI**  
**ARIEL SILVANA MURILLO · KATHERINE PALADICHUK · KELLY PRENDERGAST · S RII · MAYBELLE SHIMIZU**

Scenic Design

**JO WINIARSKI** \*

Lighting Design

**ZACH BLANE** \*

Orchestrator/Conductor

**TAYLOR PECKHAM**

Costume Design

**JANET PITCHER**

Wig & Hair Design

**PETER HERMAN**

Sound Design

**JON FREDETTE**

Assistant Stage Manager

**LEXI DELEON**

**KATE THORVICK**

Props Master

**HOLLY LAPP**

Casting Director

**LINDSAY BROOKS**

Production Stage Manager

**KIRA VINE** \*

Musical Direction

**VADIM FEICHTNER**

Fight Choreography

**NATHAN MENDEZ**

Choreography/Intimacy Direction

**TORANIKA WASHINGTON**

Direction by

**J. SCOTT LAPP** \*

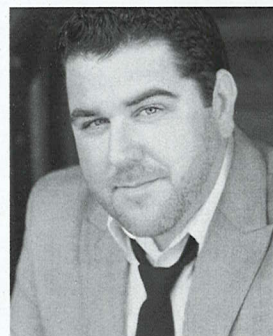
\*Member of Actors' Equity Association, the Union of Professional Actors and Stage Managers in the United States.

\*Member of the United Scenic Artists Guild, Local USA 829

\*The Director is a member of the Society of Stage Directors and Choreographers union.

Generously Underwritten by the DAVID T. and DORRIS E. STAPLES FOUNDATION

## MESSAGE FROM THE ARTISTIC DIRECTOR



Wine embodies culture, romance and poetry. Archaeologists found remnants of fermentation dating as far back as 6,000 B.C., even before the concept of writing. The ancient Greeks bestowed the drink with a protective deity, Dionysus, who was not only the god of wine but also of fertility and ecstasy. The Romans, called the god Bacchus and gave him even more prominence. Throughout history, the fruit of the sweet and fleshy grape has been prohibited and exalted. It has been, and is still used in religious ceremonies and it also has been denounced as the devil's brew. One of mankind's newest art forms has blended well with one of mankind's oldest forms of entertainment.

In 2008, a small independently produced movie was made about wine! It wasn't the first and it certainly won't be the last, but one of the most definitive films that celebrates wine most specific to our region here in California is "Bottle Shock". It was incredibly inspired by true events, although the details and lens through which the story was told were definitely given the "Hollywood" treatment.

In a Parisian hotel 46 years ago, some of France's most prominent wine experts came together for a blind tasting. The finest French wines were put up against these upstarts from California. At the time, this didn't even seem like a fair contest – France made the world's best wines and Napa Valley was not even on the map – so the result was believed to be obvious. Instead, the greatest underdog tale in wine history was about to unfold. Californian wines scored big with the judges and won, in both the red and white categories, beating legendary chateaux and domaines from Bordeaux and Burgundy. The only journalist in attendance, George M. Taber of Time magazine, later wrote in his article that "the unthinkable happened," and in an allusion to Greek mythology called the event, "The Judgment of Paris," and thus it would forever be known.

We are excited that you are here because that means you want to support the arts and as we open our second highly-anticipated world premiere here at The Center, we hope YOU will play an integral part in helping us to continue to grow. We are able to produce high-quality musical theater because you are here tonight and because of our generous donors. We can't wait for you to experience *Bottle Shock! The Musical* and witness the next bold, artistic production to reach our stage. Thank you for being an essential part of the CCAE community, and please give today to be front and center for our next act!

**J. Scott Lapp**

Director, *Bottle Shock* & Artistic Director, CCAE Theatricals

P.S. Did you know? As a relatively new nonprofit theatre company in Escondido, we rely on gifts from theatre-lovers like you to bring innovative and exciting new productions to our theatres. We cannot do this without you!



# SCENE SYNOPSIS

**Place:** The Napa Valley (mostly)

**Time:** Summer. 1976.

## ACT ONE

### The Overture - A Wine Cave somewhere in France

*Prologue: Best Wine In The World* ..... Spurrier

### Scene 1 - Chateau Montelena, Napa, CA

*You Don't Know What You Don't Know* ..... Jim, Bo, Gustavo & Ensemble

### Scene 2 - Chateau Montelena, The Office and Back Patio

*Dyin' On The Vine* ..... Bo

### Scene 3 - Chateau Montelena, Vineyard Rows

### Scene 4 - Joe's Bar, Downtown Calistoga, Napa Valley

*Welcome to Joe's* ..... Jo & Ensemble

*The Contest* ..... Gustavo, Jo, Sam, Bo & Ensemble

### Scene 5 - Molly's Farmhouse/The Cellar/A Small Barn at the Garcia Residence

*First Taste - Magnificence* ..... Spurrier, Gustavo Jim & Ensemble

### Scene 6 - Chateau Montelena, The Cellar & Winery Grounds

*First Taste (Reprise)* ..... Spurrier

*Why We Grow* ..... Ensemble & Gustavo

### Scene 7 - Chateau Montelena, The Back Patio/Vineyard Rows

*Summer in a Bottle* ..... Sam

### Scene 8 - Chateau Montelena, The Office/Joe's Bar/Vineyard Rows

*In the Blood* ..... Gustavo & Ensemble

THERE WILL BE ONE 15-MINUTE INTERMISSION

Please turn off all electronic devices such as cellular phones and watch alarms. The use of any recording device, either audio or video, and the taking of photographs, with or without flash, is strictly prohibited.

Latecomers will be seated at the discretion of management. Patrons with disabilities: wheelchair seating is available in a variety of theatre locations. When ordering tickets, please indicate any special needs, please contact an usher for assistance.

# SCENE SYNOPSIS

## ACT TWO

### Entr'acte - The Vineyard Rows of Chateau Montelena

*Entr'acte* ..... Ensemble

### Scene 1 - Joe's Bar, Downtown Calistoga, Napa Valley

*It Takes a lot of Beer (To Make Good Wine)* ..... Jo & Sam

### Scene 2 - Chateau Montelena/The Cellar/Sam's Shack on the Back 40

*Take A Chance (Part 1)* ..... Bo

*Take A Chance (Part 2)* ..... Sam, Gustavo & Ensemble

### Scene 3 - Chateau Montelena, The Cellar

### Scene 4 - The Airport Shuttle Counter, Napa

*Helping Hand* ..... Bo, Spurrier & Ensemble

### Scene 5 - Joe's Bar, Downtown Calistoga, Napa Valley

*The Bad with the Good* ..... Bo, Gustavo & Jo

### Scene 6 - Chateau Montelena, The Cellar

*Summer's End* ..... Bo, Jim, Gustavo & Ensemble

### Scene 7 - The Law Firm Waiting Area/Joe's Bar, Calistoga

### Scene 8 - Chateau Montelena, Napa, CA

*The Journey of You* ..... Sam

### Scene 9 - The InterContinental Hotel, Paris

*The Judgment of Paris* ..... Spurrier, Bo & Ensemble

### Scene 10 - The Office at Chateau Montelena/InterContinental Hotel in Paris

*Celebration - It's Time* ..... Spurrier, Jim, Sam, Gustavo, Jo & Ensemble

### Scene 11 - Chateau Montelena, Napa, CA

*Finale - The Best Wine in the World* ..... Full Company



## THE BAND



Guitar 1  
JACK MAJDECKI

Conductor/Keyboard/Accordion  
TAYLOR PECKHAM

Bass  
MICHAEL PEARCE

Guitar 2  
PJ BOVEE

Drums  
BRIAN DALL

Percussion  
DANNY CHAVARIN



# CAST

Steven Spurrier ..... LOUIS PARDO\*  
 Jim Barrett ..... T.J. MANNIX\*  
 Gustavo Brambilla ..... PATRICK ORTIZ\*  
 Bo Barrett ..... WILL RIDDLE  
 Samantha Fulton ..... EMMA DEGERSTEDT\*  
 "Jo" Fagnani ..... TAYLOR RENEE HENDERSON

Grgich ..... MICHAEL CAVINDER\*  
 Big D ..... JOEY MICELI  
 Biker Gal ..... ARIEL SILVANA MURILLO  
 TWA Attendant ..... KELLY PRENDERGAST  
 Marge ..... MAYBELLE SHIMIZU  
 Mom/Operator's Voice ..... LIBBY JOHNSTON  
 Msr. Pierre Tari ..... JOEY MICELI  
 Msr. Pierre Brejoux ..... CHASE LOWARY  
 Madame Christian Venneque ..... MAYBELLE SHIMIZU  
 Madame Odette Kahn ..... ARIEL SILVANA MURILLO

## ENSEMBLE

MICHAEL CAVINDER\*, LIBBY JOHNSTON, CHASE LOWARY, JONAH MEYER,  
 JOEY MICELI, ARIEL SILVANA MURILLO, KELLY PRENDERGAST,  
 S RII, MAYBELLE SHIMIZU

## UNDERSTUDIES

Understudies never substitute for players unless a specific announcement  
 for the appearance is made at the time of the performance.

Understudy for Spurrier, Jim: MICHAEL CAVINDER\*;  
 for Gustavo: JONAH MEYER; for Bo: CHASE LOWARY;  
 for Sam: KELLY PRENDERGAST; for Jo: ARIEL SILVANA MURILLO;  
 For Ensemble: KATHERINE PALADICHUK, S RII

## DANCE CAPTAINS:

LIBBY JOHNSTON, MAYBELLE SHIMIZU

## FIGHT CAPTAIN:

MICHAEL CAVINDER\*

\*Member of Actors' Equity Association, the Union of Professional Actors and Stage Managers in the United States

The authors of this musical would like to acknowledge that this is a fairytale version of events. The actual story surrounding the "Judgment of Paris" is not exactly what you are seeing, but we have endeavored to bring you the rock and roll truth of its spirit.

If you would like to learn more about what really happened,  
 including about Chateau Montelena, Gustavo Wines, and Grgich Hills Estate, please visit:  
[www.montelena.com](http://www.montelena.com) | [www.gustavowine.com](http://www.gustavowine.com) | [www.grgich.com/the-paris-tasting](http://www.grgich.com/the-paris-tasting)

We would also love to encourage you to visit your local, smaller production, diverse and family owned,  
 and especially sustainable/organic/biodynamic practice wineries. When you taste it, you will know.

Cheers! From the *Bottle Shock! The Musical* Family

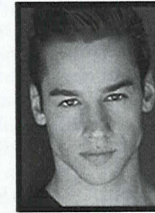
# CAST



LOUIS  
PARDO\*



T.J.  
MANNIX\*



PATRICK  
ORTIZ\*



EMMA  
DEGERSTEDT\*



WILL  
RIDDLE



TAYLOR RENEE  
HENDERSON



MICHAEL  
CAVINDER\*



LIBBY  
JOHNSTON



CHASE  
LOWARY



JONAH  
MEYER



JOEY  
MICELI



ARIEL SILVANA  
MURILLO



KATHERINE  
PALADICHUK



KELLY  
PRENDERGAST



S  
RII



MAYBELLE  
SHIMIZU

Womens Wine Alliance provides monthly educational seminars and quarterly networking parties. Supporting and advancing women in San Diego's wine industry since 2014, we have awarded over \$30,000 in scholarships to assist members pursuing advanced certification and education. Join our community by becoming a member! Or, if you are not a woman in the wine industry, support our mission by donating to our scholarship fund.

Please visit our website for more information

[www.womenswinealliance.com](http://www.womenswinealliance.com)





**LOUIS PARDO** he/him (*Steven Spurrier*) is over the moon to be working on this brilliant new piece with CCAE. He was last seen as Adam in *An American In Paris* at Musical Theater West. Favorite credits include: *We Ain't Ever Gonna Break Up: The Hyman and Parfunkel Story* at Chance Theater/Playwrights Horizons by Gregg Hammer and Louis Pardo, The Grammy nominated *West Side Story* with The San Francisco Symphony, *Hair* at The Hollywood Bowl, *A Year with Frog and Toad* South Coast Rep. Louis would like to thank his parents, his brother, Lindsay, James, Vadim, Jeremy and ATB for their confidence and the opportunities that are allowing him to pursue his dream once more.

**T.J. MANNIX** he/him (*Jim Barrett*) Proud to be a part of the *BottleShock* family for ten years. In NYC, T.J. has tackled everything from Santa (*Radio City Christmas Spectacular*) to soaps (All My Children, One Life to Live, As the World Turns), to serial killers (too many). You may have seen him in 80+ commercials or three versions of Law and Order. He has toured the world with The Second City/NCL and with his epic, one-man, improvised musical *LimboLand*. T.J. founded the New York Musical Improv Festival. www.NYMIF.com He admits to spending a very dark year as a Mouseketeer. Faculty - Circle in the Square NYC, NYFA. Proud member of Actor's Equity. Thanks to the Gang at Avalon Artists Group.

**PATRICK ORTIZ** he/him (*Gustavo Brambilla*) TV: NBC's "Zoey's Extraordinary Playlist" where he played Eddie, "One Life To Live", and "The Unbreakable Kimmy Schmidt". Broadway Credits: *West Side Story* (Chino) and *Mamma Mia!* (Eddie u/s) 1st National Tours: *We Will Rock You* (Brit u/s), *West Side Story* (Shark swing) Regional: *The Little Mermaid* (Prince Eric), the MUNY's *West Side Story* (Pepe), *Drag: The Musical*, *BAZ Star Crossed Love* at The Palazzo, Las Vegas (Romeo, Dance Captain), *Invincible w/ Pat Benatar* (Paris), *The Brat Pack* (NCL and The Line Hotel, Los Angeles), *Altar Boyz* as Juan (North Carolina Theatre and Westchester Broadway Theater, NY), *West Side Story* (Bernardo) Palos Verdes and 5 Star Theatricals, *Mamma Mia!* at The Tropicana, Cathy Rigby's *Peter Pan*, *Orchid: A Burlesque Circus*, Miami, FL as lead vocalist and vocal captain. BFA in Musical Theatre CSUF.

**WILL RIDDLE** he/him/his (*Bo Barrett*) is sincerely thrilled to be making his CCAE debut with this company of working artists. Since the age of nine, he has performed as a session singer, guitarist, and as a voice over artist for PBS. He'd like to thank his extended family for teaching him how

music can make us sacred, and thanks his father for showing him that artistry is how we choose to care for others. He gives love and gratitude to Janaya, for shining their light on the path he couldn't see without his glasses. Previous roles include an award winning turn as Buddy Holly in *The Buddy Holly Story*, John in *Staring Into Nothing*, Chip Tolentino in *25th Annual... Spelling Bee*, Lord Farquaad in *Shrek The Musical*, and Colin in *Elsewhere*, (original cast album now streaming) @will\_riddle\_

**EMMA DEGERSTEDT** she/her (*Samantha Fulton*) began her career starring on the Nickelodeon Series "Unfabulous" and originated the role of Kendra in Jason Robert Brown's *13* in LA. After receiving her bachelor's degree from UCLA, she originated Susanna in *Desperate Measures* in NYC and can be heard on the cast album. In 2018, she was cast as the Shimmy Girl in the *Smokey Joe's Cafe Revival* (2019 Chita Rivera Award nominee). Other credits: Ariel in *The Little Mermaid* at The Muny, Elle Woods in *Legally Blonde* (Los Angeles Ovation Nominee). TV/Film: Big Bang Theory, FBI most wanted, LIFE, Samantha Who, The Curious Case of Benjamin Button, Hannah Montana. In fall of 2020, she founded a non profit theatre company, Bringing You Broadway. Love to her agents at DGRW, mom and dad, and Shane. @officialemmageds

**TAYLOR RENEE HENDERSON** she/her (*Jo Fagnani*) is "buzzed" about making her CCAE debut in the world premiere of *Bottle Shock! The Musical*. Taylor has been working professionally both on and offstage for an upwards of 10 years and enjoys singing karaoke as well as playing Dungeons & Dragons in her downtime. Do something everyday that makes you happy. "Inspire. Aspire!" Selected credits: *Xanadu*, *Hairspray* (SDMT), *The High Table* (American Premiere) & *A Civil War Christmas* (Diversionsary), *Into The Breeches!*, *All In The Timing*, *Twelfth Night & An Ideal Husband* (NCRT), *As You Like It*, *Les Liaisons Dangereuses* (New Fortune), *Home Of The Brave*, *Under Construction*, *Ojo* (La Jolla Playhouse), *The Three-Penny Opera* (UCSD), *A Little Night Music*, *Avenue Q* (Coronado Playhouse), *RENT* (Southwestern), The Acey Deucey Club (Fever US/Cinereal Productions), Carnival Row (SDCC/Amazon Prime), Fresh, Fried and Crispy (Netflix), Finding Magic Mike (HBO Max) @tay.renee.onstage

**MICHAEL CAVINDER** he/him (*Ensemble/US Jim Barrett/US Steven Spurrier*) is so happy to be joining this wonderful group in telling this love story to California. He himself is a tall glass of Pinot Noir who enjoys whittling spoons, long walks, and good conversation. He

has performed throughout the southland of Southern California as well as National and international tours. Thanks to his mom and family, friends, and his team at FireStarter Entertainment! Enjoy the show!

**LIBBY JOHNSTON** she/her (*Ensemble/ Samantha Fulton Cover*) is thrilled to be making her CCAE and West Coast debut with *BottleShock! The Musical*. New Zealand actress based in New York City, Libby's previous credits include *BottleShock!* at Forestburgh Playhouse (Samantha Fulton), the New Zealand National Tour of *The Sound of Music* (Liesl), Fred Ebb Award Workshop of *One Way* (Ingrid), Burwell & Sasser's movie musical *Le Comte Noir* (Marie-Louise Labouret) and *The Lord of the Rings: The Fellowship of the Ring Live in Concert* at Radio City Music Hall. Endless love and gratitude to Mum and Dad, and Joey Miceli. Find out more at libbyjohnston.com @libjohnston

**CHASE LOWARY** he/him/his (*Ensemble/ US Bo Barrett*) is so excited to be returning to CCAE this summer in *BottleShock!* Chase is a recent graduate of San Diego State University where he obtained his B.A., Theatre Performance. Chase's most recent theatre credits include: Male Ensemble, *The Light in the Piazza* (CCAETheatricals), *Man 2*, *Songs for a New World* (Teatro San Diego), *Cinderella's Prince/Wolf*, *Into the Woods*, Melchior Gabor, *Spring Awakening*, & Adam, *The Mad Ones* (SDSU MTC), *Mother*, *Seven Deadly Sins & King Balthazar*, *Amahl and the Night Visitors* (SDSU Opera Theatre). Chase hopes you enjoy the show! @cjlowary

**JONAH MEYER** they/he (*Ensemble/US Gustavo Brambilla*) Jonah is thrilled to join the cast of *BottleShock* as their first show out of college. Most recently, they have performed in shows such as *Cabaret*, *35 MM*, *Beauty & the Beast*, *The Little Mermaid*, and *Shrek: the Musical*. They also had the opportunity of performing in the Educational Outreach shows for Musical Theatre West. As they continue to grow, they'd like to reflect on and thank all of the educators and mentors that helped them get here! In addition, they would love to express gratitude for the endless support from their family and their partner Bailey! And another thank you to the friends that believed in them from the very start. Jonah is a proud alumnus of the CSUF. Go Titans! @jonahsmeyer

**JOEY MICELI** (*Ensemble*) has been on the rise to international stardom for more than a decade now, first stepping into the music industry at 9 years old. The singer-songwriter from Las Vegas is known for his candid and painstaking form as a

songwriter, hoping to inspire the following generations to find power in their vulnerability and expression. CCAE debut. Off-Broadway/NYC: *Tess*, *A New Musical in Concert*, Dave Malloy and Krista Knight's *Don't Stop Me*, Fred Ebb Award workshop of *One Way*. Regional: *BottleShock!* (Forestburgh Playhouse). His new album, *The Expanded Portrait*, is available everywhere now. Thank you to MTA, Mana, Bob, Boyd, Randy, Eileen, Paola, Mom and the Johnston family. @joeymiceli joeymiceli.com

**ARIEL SILVANA MURILLO** (*Ensemble/ US Jo Fagnani*) is a performer from Southern California and is so excited to be making her CCAE Theatricals debut in *BottleShock the musical!* She is a graduate of AMDA College and Conservatory of the Performing Arts and has appeared in many regional musical productions throughout Southern California. She wants to thank her loved ones for their endless support. @arielsilvanamurillo Tik Tok: @arielsilvana

**KATHERINE PALADICHUK** she/her (Swing) is thrilled to be back at CCAE Theatricals for another new musical! National Tour: *Rudolph the Red-Nosed Reindeer* (Elf, u/s Rudolph). Regional: *Witnesses* (World Premiere), *S.A.T. A Musical* (Staged Reading), *Joseph and the Amazing Technicolor Dreamcoat* (Candlelight Pavillion). BFA: California State University, Fullerton. She would like to thank her parents, family, and friends for their endless support. IG: @katherinepaladichuk

**KELLY PRENDERGAST** she/her (*Ensemble/US Samantha Fulton/Jo Fagnani Cover*) is thrilled to raise a glass with the company of *BottleShock! The Musical!* Most recent credits: (Soloist) *San Diego Symphony Christmas Concert*, (Alice Barker) *Scott Robbins and the Traveling Show*, (Swing) *Cabaret* at Cygnet Theatre, (Swing/Understudy) *Eighty-Sixed the Musical* at Diversionsary Theatre, (Swing/ Understudy) *Ride The Cyclone* at McCarter Theatre Center, (Swing/Jenna Understudy) on the National Tour of *Waitress*. Thank you to ASP! And thank you to my mom for supporting my dream. My performances are dedicated to the memory of my dad, who always believed in me. @kellyprendergast1

**MAYBELLE SHIMIZU** they/she (*Ensemble*) is thrilled to be making their CCAE debut in *BottleShock!* and to be returning to the stage after years of hiatus for the pandemic. Favorite acting credits: *Bull in a China Shop* (Diversionsary), *As Bees in Honey Drown* (Onstage Playhouse), *25th Annual Putnam County Spelling Bee* (USD), *Tartuffe* (USD MFA), *Fault of Falling* (SD Fringe 2017).



**S RII** they/them (*Swing Ensemble*) is honored to be part of *BottleShock!* at CCAE Theatricals. They hold a B.A. in Music from OCU and have been a life-long member of the North County San Diego performing arts community. Thank you to J. Scott Lapp, the writing team of Burwell and Sasser, and the creative team of *Bottle Shock!* for this opportunity. Thank you to Tom Abruzzo, the Dorris Staples Theatrical Conservatory, and the generosity of the David T. and Dorris E. Staples Foundation for making this opportunity possible. Lots of love to John John and Johnny for their support. Big hugs to Tom, Ann, and Bob. @srii.talent

**JAMES D SASSER** (*Book, Lyrics & Additional Music*) has been involved in the development of dozens of new works as a writer, actor, and producer. Recent TV appearances include *The Good Fight*, *Madam Secretary*, and *Succession*. Theatre highlights: Broadway as a singer with *Riverdance*, *Jesus Christ Superstar* (as Pilate), *Forbidden Broadway*, *Dirty Rotten Scoundrels*, *Sweeney Todd* (as Sweeney), and many more. He is the writer for *Looking For Christmas* with country legend Clint Black which premiered at The Old Globe. His pilot Forsyth County won multiple awards including HollyShorts Best TV Screenplay, and his original song Epitaph was recognized by London Seasonal Short Film Festival and XXII CinéFagos Film-Art Festival. James' voice can be heard in hundreds of audiobooks of various genres, commercials, and video games. Member of Dramatists Guild, Actors Equity, SAG-AFTRA, and ASCAP. jamesdassers.com @jamesdsasser

**CHARLES VINCENT BURWELL** (*Music & Lyrics*) has worked with organizations ranging from Lincoln Center Institute, Urban Bush Women, Katherine Dunham Institute, Trenton Educational Dance Institute, National Dance Institute, Festival del Caribe Santiago de Cuba, Ile Aiye Salvador de Bahia Brazil, Bates Dance Festival, Jacob's Pillow Dance Festival; Cairo Egypt Opera House Ballet, and he was a longtime faculty member at Alvin Ailey American Dance Theater. He is a Pew Center for Arts and Heritage Fellowship recipient, and a Brooklyn Arts Council grant recipient for his work with Renegade Performance Group's Afrofuturism Series. Member of The Dramatists Guild, and the Omicron Gamma Chapter of Phi Mu Alpha Sinfonia Professional Music Fraternity. Vince currently serves as Charter member of the Omicron Gamma Chapter of Phi Mu Alpha and Dramatists Guild. Professor of Theatre at the Boston Conservatory at Berklee (BoCo). @thelifeof\_vince charlesvincentburwell.com

**J. SCOTT LAPP** (*Director*)\* is an award-winning director, a proud member of the SDC and the Artistic Director at The California Center for the Arts, Escondido. With over 130 productions under his belt, he has worked across the United States as well as Internationally in London, Denmark, Japan and Canada. He served as the Associate Director on the world premiere West End production of *The Prince of Egypt* at the Dominion Theatre and directed the Japanese tour of *Murder For Two* that played in Tokyo, Osaka, Sendai & Matsumoto. He is the recipient of the 2022 Craig Noel Award for Outstanding Direction for his production of *Witnesses*, which also won Outstanding New Musical at the 2022 Critics Circle Awards. Associate/Assistant Directing credits include Broadway: *Bonnie & Clyde*; International: *The Prince Of Egypt* (West End, Fredericia Teater); Off-Broadway: *Murder for Two* (New World Stages), *Freedom Riders* (NYMF); National Tour: *Murder for Two*, *Xanadu*. Regional: *Disney's The Hunchback of Notre Dame* (Paper Mill Playhouse, La Jolla Playhouse); *Rain, Into The Woods*, *Good People*, *A Room With a View* (Old Globe); *Secondhand Lions* (5th Ave). Upcoming projects include the San Diego Premiere of *The Curious Incident of the Dog in the Night-Time* at The CCAE. Much love to Holly for being his sounding board, rock and lifelong partner. jscottlapp.com @jscottlapp

**VADIM FEICHTNER** (*Musical Director*) Broadway: *Falsettos* (revival); *The 25th Annual Putnam County Spelling Bee*. Off-Broadway: *Scotland, PA*, *Fly By Night*, *A New Brain* (City Center Encores!); *Little Miss Sunshine*; *Nobody Loves You*; *Elegies: A Song Cycle*; *The Other Josh Cohen*; *The Memory Show*; *Infinite Joy*; *The 25th Annual Putnam County Spelling Bee*; *The Burnt Part Boys*; *Ordinary Days*; *Long Story Short*; *Evolution of Mann*; *I Sing!*; *Songs of Innocence & Experience*; *As You Like It* (The Public). TV: "Last Week Tonight"; "Live at Lincoln Center"

**TORANIKA WASHINGTON** (*Choreographer & Intimacy Direction*) Chicago, Illinois. Movement Analyst, Somatic Coach, and Kemetec (African) Yoga Instructor. She holds a Master of Fine Arts in Choreography and a Master of Arts in Teaching and Learning. She is a faculty member and administrator at The Theatre School at DePaul University Chicago. Her favorite intimacy direction credits include *The Drunken City*, *Three Antarctica's*, *Eurydice*, *Good Grief*, *Bernhardt/Hamlet*, *Color Purple*, and *A Wrinkle in Time*. She is the CEO of Somatic Soul Food – Movement Consulting, a private practice where she offers strategies for relieving stress and reducing anxiety. Holding a Bachelor of Arts

in Radio and Television Broadcasting, her favorite memory was working for NBC at NASA's Kennedy Space Center, she watched former U.S. Senator and astronaut John Glenn Jr. launch into space on Shuttle Mission Discovery in Cape Canaveral, Florida. @tah-ruh-nee-kah somaticssoulfood.com

**TAYLOR PECKHAM** he/him (*Orchestrator & Conductor*) is loving the chance to collaborate with old friends (Jeremy, Jordan, Vadim), partner with new friends (James, Vince), and make music with all his rockstar band buddies on *BottleShock! The Musical*. Taylor is a San Diego music professional working at various venues around town, always mandating two things: make it good, and make it fun.

**KIRA VINE**\* she/her (*Production Stage Manager*) is a proud Equity Stage Manager and is excited to return to CCAE for *Bottle Shock!* Previously at CCAE: *Ain't Misbehavin'*. Other local credits include: *Pick Me Last*; *The Luckiest* (La Jolla Playhouse); *The Gardens of Anuncia*; *Ebenezer Scrooge's Big San Diego Christmas Show*; *Noura*; *Native Gardens* (The Old Globe); *The Great Khan*; *Actually*; *Aubergine* (San Diego REP); *Hedwig & the Angry Inch*; *Homos: Or, Everyone in America* (Diversions Theatre); *Cabaret* (Cygnet Theatre); *Bliss: Or, Emily Post is Dead* (MOXIE Theatre); *Seven Spots on the Sun* (InnerMission Productions). Regional: *A Christmas Carol* (American Conservatory Theatre); *Agent 355* (Chautauqua Theatre Company).

**JO WINIARSKI**\* (*Scenic Design*) Off-Broadway credits include *The Fears*, *HYPROV*, *Accidentally Brave*, *The Absolute Brightness of Leonard Pelkey*, and *Love, Loss, and What I Wore*. Regional design highlights Guthrie Theatre; Arizona Theatre Company; Utah - Shakespeare Festival (over 45 shows); The Old Globe; Berkeley Repertory Theatre; Pioneer Theater; Oregon Shakespeare Festival; and the Dallas Theater Center. Additional credits include *Wishes* for Disney Cruise Line. Jo was the original art director on *Late Night* with Seth Meyers (episodes 1-844). She was also nominated for an Emmy for Art Direction for *A Colbert Christmas: The Greatest Gift of All*.

**ZACH BLANE**\* he/they (*Lighting Design*) CCAE: *Witnesses*. Television: *Wicked in Concert* (PBS, dir. Baayork Lee). International: *Shrek* (Sofia National Opera House, Bulgaria); *Remember This* (Poland Tour, Spain). New York (selected): *Titus Burgess*, *Take Me to the World* (Carnegie Hall); *Remember This* (TFANA); *Into the Woods*, *In Concert* (Town Hall); *Too Much*,

*Too Much, Too Many*; *Suicide Incorporated* (Roundabout Theatre Company); *The Siblings Play* (Rattlestick Theater); *Would You Still Love Me If* (New World Stages, dir. Kathleen Turner); Charles Busch's *Cleopatra* (TFANC); *Wringer* (City Center). Regional (selected): *May We All* (TPAC), *Djembe* (Apollo Theatre), Shakespeare Theatre Company, Chicago Shakespeare, Pasadena Playhouse, Two River Theater, Maltz Jupiter Theatre, Olney Theatre Center, Barrington Stage Company, Bucks County Playhouse, Dorset Theatre Festival, Cape Playhouse. www.ZachBlane.com @zachblane

**JON FREDETTE** he/him (*Sound Design*) is a freelance composer, sound designer, and podcaster currently based out of Los Angeles, CA. He has a masters in Sound Design from the University of North Carolina School of the Arts, and has taught sound and music at two universities in North Carolina. He has designed and worked extensively with Triad Stage, Cape Fear Regional Theatre, The Adirondack Theatre Festival, La Jolla Playhouse, and Montana Repertory Theatre; He is happy to be back working with CCAE again after wonderful experiences opening *The Light in the Piazza*, *Witnesses*, and most recently *Sunday in the Park with George*.

**JANET PITCHER** (Costume Design) is excited to create a perfect pairing with two of her favorite things - wine and theater, designing costumes for *BottleShock* with CCAE Theatricals! Janet began her costuming career volunteering in youth theater with her kids, then designing costumes professionally in 2012. She has costumed over 100 professional productions throughout San Diego. Favorite productions include: *Sunday in the Park with George*, *Witnesses*, *The Light in the Piazza*, *Once*, *Joseph* (CCAETheatricals) *In the Heights*, *A Christmas Story*, *All Shook Up*, *Sister Act*, *Young Frankenstein*, *Full Monty*, *9 to 5*, *Billy Elliot*, *West Side Story*, *La Cage Aux Folles* and *Chicago* (SDMT); *The Bodyguard*, *A Chorus Line*, *Addams Family*, *Mamma Mia*, *A Christmas Carol*, *My Fair Lady*, *Sweet Charity*, *Jesus Christ Superstar*, *Cabaret*, *Hello Dolly*, *Oklahoma*, *Hairspray*, *Anything Goes*, *Rent* (Welk Theatre) Awards: Robby nomination (*Kiss of the Spiderwoman*), SD Theater Critics Circle nomination (*Light in the Piazza*, *Sunday in the Park With George*).

**PETER HERMAN** (*Hair & Wig Design*) is proud to be part of the design team for *Bottle Shock*. He has previously designed wigs for *Sunday in the Park with George*, *The Light in the Piazza* and *Ain't Misbehavin'* and some consultation work on *Witnesses*. Peter has designed wigs all over the Southern California area. Some of his



work has been seen at Cygnet Theater, The La Jolla Playhouse, The San Diego REP, Moonlight Stage Productions, Diversionary Theatre, North-coast Rep as well as some design work for film, television, and various theme parks. Peter currently teaches wig and makeup design at San Diego State University.

**HOLLY LAPP** (*Props Master*) is honored to be working with CCAE Theatricals on the stunning world premier of *Bottle Shock! The Musical*. After working in many other crew and artistic capacities, she is thrilled to have been given the opportunity to manage the props. She would like to thank CCAE Theatricals and JSL for the opportunity and their constant support. All glory given to God.

**NATHAN MENDEZ** (*Intern Director & Fight Direction*) As the Associate Artistic Director and choreographer at Theater Alliance in Washington D.C. from 2012 to 2014, he worked on various productions such as *A Man, His Wife and His Hat*, *A Dream Play*, *A Few Good Men*, and *HUM* to name a few. Nathan also made an impact as the movement instructor for the Kennedy Center Playwright Festival, where he coached aspiring artists in their physical performances. He received the prestigious Helen Hayes Award for his outstanding direction in *The Wonderful World of Dissocia*. Nathan's dedication to the arts extends beyond the stage. He founded One Body Works, a physical movement company, that teaches a specialized technique focusing on the ensemble's physical movement to convey a compelling story.

**TYLER YBARRA** (*Musical Direction Intern*) is so excited to be joining this team at CCAE! He recently earned his Musical Theatre Certificate from RCC, where he made his music directing debut (*Into the Woods*). He has also performed in shows with Performance Riverside (*Mary Poppins*, *Beauty and the Beast*). He would like to thank everyone involved for giving him this opportunity, and his friends and family for all their support!

**LEXI DELEON** (*Assistant Stage Manager*) is thrilled to be returning back to CCAE Theatricals. She currently works full time in event operations at a premier venue for professional sporting teams, concerts, and other live events. She has worked in both Union and Non-Union theaters. Some of her favorite credits include *The Disney Jr Dance Party Tour* (Feld Entertainment (Stage-hand)), *Get Out Alive* (CCAЕ Theatricals (PSM)), *Your A Good Man*, *CB* (Round Barn Theater (PSM)), *House of Joy* (San Diego Repertory Theater (ASM)), *Bad Hombres/Good Wives* (San Diego Repertory Theater (ASM)), *Miracle on 34th Street* (SDMT (ASM)), and the *Kyoto Prize Symposium Gala* (ASM).

**KATE THORVICK** (*Assistant Stage Manager*) is a theatre artist born and raised in San Diego. She graduated from NYU Tisch School of the Arts in January of 2021 with her BFA in Theatre. Kate is a multifaceted artist who has studied most theatrical disciplines and loves to support and investigate new works of theatre. Local theatre highlights include: ASM for *The Great Khan* (San Diego Repertory Theatre), ASM for *On Her Shoulders We Stand* (TuYo Theatre, La Jolla Playhouse's WOW Festival), ASM for *Witnesses* (CCAЕ Theatricals), PSM for *Mary Poppins* (Moonlight Youth Theater), ASM for *Sunday in the Park with George* (CCAЕ Theatricals), ASM for *Jesus Christ Superstar* (Moonlight Stage Productions). She is happy to be back at CCAE for another world premiere musical!

**LINDSAY BROOKS** (*Casting Director*) has worked in casting for almost 10 years with credits including *The Office! A Musical Parody* (Off-Broadway, 1st National), *Rudolph the Red-Nosed Reindeer: The Musical* (Off-Broadway, 1st National, 2nd National, Grand Ole Opry), *Friends! A Musical Parody* (1st National), *The Simon & Garfunkel Story* (1st National, 2nd National), *Musical Thrones: A Parody of Ice & Fire* (1st National), *Peter Pan* (Riyadh, Saudi Arabia), *Greater Tuna* (National Tour), *The-Pout-Pout Fish* (TheatreWorksUSA), multiple stage productions, tours and readings for McCoy Rigby Entertainment and is currently the resident casting director here at CCAE Theatricals. She is also a working improv comedian and a pretty cool mom. @lindsaykbrooks

**LEIGH AKIN** she/her (*Production Manager*) is the newly minted Production Manager of CCAE and could not be more excited to be a part of this incredible art-making team! She believes very strongly in the healing power of creativity, and community, and has always found theater to be the most fulfilling combination of the two. As an arts administrator she has produced for The Roustabouts Theatre Company in San Diego, managed operations at Scripps Ranch Theatre, and produced her own female/non-white-empowering comedy show in NYC called *Good Luck Mondays*. She is also a singer, actor, and illustrator and has performed in Theatres across the US. You can see more of her work at leighellenakin.com

**JORDAN BECK** (*Managing Producer*) has been producing theatre and various cabaret and concert productions for over a decade. With over 200 events under his belt, he has earned a reputation for attracting some of the most talented artists and musicians from across the country. He is extremely proud of how far he and J. Scott Lapp have

come since first teaming up in 2012. Jordan is also a musical theatre lyricist and frequently collaborates with composer Gerald Sternbach. Current projects include *Biting Broadway!* and last season's world premiere musical *Witnesses*. Welcome back to the theatre! We've missed you!

**LIAM SULLIVAN** (*Assistant Production & Company Management Intern*) is a San Diego native. Born and raised in Escondido he has been to numerous shows at CCAE and is excited to join them as an Assistant Production and Company Management Intern. Liam graduated from San Diego State University with his degree in Theater Arts. He has worked on numerous productions all around San Diego County as an actor, crew member, or production staff with places such as the Moonlight Amphitheater, La Jolla Playhouse, BlindSpot Collective, and Backyard Renaissance to name a few. He is excited to have the opportunity to be working with and learning from the CCAE staff on their world premier of *Bottle Shock! The Musical*.

CCAЕ Theatricals would like to thank the following for their support of this production of *Bottle Shock! The Musical*:

CHEVAL WINERY LOREE RUSSEAU  
SARA MATTA DENISE CLARK  
WENDY SHAFER GUSTAVO WINES  
BARGAIN RENT A CAR  
CHATEAU MONTELENA  
HOLIDAY WINE CELLAR  
RAMONA RANCH WINERY  
WOMENS WINE ALLIANCE  
DAN & VERNA SUNDQUIST  
LAMB'S PLAYERS THEATRE  
GRAND RESTAURANT GROUP  
IAN MACDIARMID & ANN HALL  
LAURA FLOWERS & MARK GRAHAM  
IRVING Z. & ANNE SIGELE FOUNDATION  
DAVID T. & DORRIS E. STAPLES FOUNDATION

GRAND RESTAURANT GROUP

Official Restaurant Sponsor

# BELLAMY'S

RESTAURANT

417 W. GRAND AVE. ESCONDIDO, CA 92025 (760) 747-5000

Bring your Bottle Shock! ticket stub in and receive 20% off your check. \*Excluding alcoholic beverages



## COTTON PATCH GOSPEL

THE BLUES & BLUE-GRASS  
MUSICAL HIT!

JUNE 20 - AUGUST 20

LAMB'S  
PLAYERS THEATRE

1142 ORANGE AVENUE

LAMBSPLAYERS.ORG • 619.437.6000



# PRODUCTION STAFF

Director .....	J. SCOTT LAPP+
Musical Director .....	VADIM FEICHTNER
Choreographer/Intimacy Director .....	TORANIKA WASHINGTON
Orchestrator/Conductor .....	TAYLOR PECKHAM
Production Stage Manager .....	KIRA VINE*
Assistant Stage Manager .....	LEXI DELEON, KATE THORVICK
Scenic Design .....	JO WINIARSKI^
Lighting Design .....	ZACH BLANE^
Sound Design .....	JON FREDETTE
Costume Design .....	JANET PITCHER
Props Master .....	HOLLY LAPP
Wig & Hair Design .....	PETER HERMAN
Wardrobe Assistant .....	MAX CADILLAC
Directing Intern/Fight Choreographer .....	NATHAN MENDEZ
Fight Captain .....	MICHAEL CAVINDER*
Dance Captains .....	LIBBY JOHNSTON, MAYBELLE SHIMIZU
Musical Direction Intern .....	TYLER YBARRA
Costuming Intern .....	MATILDE MARCONI
Production & Company Management Intern .....	LIAM SULLIVAN
Shop Foreman .....	STEVE LONGFELLOW
Lead Scenic Carpenter .....	DAVID JOHNSON
Scenic Carpenter/Head Rigger .....	VINCE JOLLEY
Lead Scenic Artist .....	GEORGE GONZALES
Scenic Artist .....	BRENDA TOWNSEND
Production Electrician .....	AMBER STEINBECK
Lighting Board Operator .....	OLIVER HAMMEL
Mixing Engineer .....	BRANDON BOOMIZAD
Production A2 .....	PAUL LICHTENFELD
Prop Runner/Deck Crew .....	MELISSA BONILLA, YEN AUGUSTIN
IATSE Steward .....	NATHAN WOODS

\*Member of Actors' Equity Association, the Union of Professional Actors and Stage Managers in the United States.

Member of the United Scenic Artists Guild, Local USA 829

^The Director is a member of the Society of Stage Directors and Choreographers union.

Chief Executive Officer .....	GINA LOPEZ
Director of Performing Arts .....	JULIANNA CRESPO
Director of Community Advancement .....	MARK STENROOS
Artistic Director of Theatrical Productions .....	J. SCOTT LAPP
Managing Producer of Theatrical Productions .....	JORDAN BECK
Production Manager .....	LEIGH AKIN
Theatrical Conservatory Director .....	TOM ABRUZZO
Technical Director of Theatrical Productions .....	BENJAMIN MANN
Human Resources .....	BRIANN GUILLEN
Ad Buy Strategist .....	LESLEY RUSSE
Front of House Manager .....	DALE KINNEY
Ticket Office Manager .....	JASON DANIO

Thank you to these additional Production Sponsors:



EVENT WAVE

# GENERAL INFORMATION

## THEATER POLICY

### Cameras, Video Cameras, Tape Recorders

Recording devices of any type are prohibited in the Center Theater at the California Center for the Arts, Escondido.

### Mobile Telephones

Please turn off or silence your phones upon entering the theater. Please, no texting during the performance.

### Please Remember

Smoking is not permitted in the Center Theater at any time.

As a courtesy to other patrons and the performers, please stay seated until the final curtain call has ended and the house lights have been turned on.

Patrons are discouraged from bringing infants, toddlers and children under the age of five to performances. If children are causing a disturbance to other patrons, CCAE Management reserves the right to ask the parent to remove the child from the theater.

Every person must have a ticket and seat assignment, regardless of age.

Please note the nearest exit from your assigned seat. In the unlikely event of an emergency, please walk to that exit.

### Late Seating

As a courtesy to our performing company and all of our patrons, late comers will be seated at the discretion of CCAE Management and may be seated in the nearest available seat, regardless of your actual seat assignment, until the intermission when you may take your regularly assigned seat.

## TICKETING POLICY

### Box Office Information

The California Center for the Arts, Escondido Box office is located at 340 N. Escondido Blvd, Escondido, CA 92025 and is open one hour prior to curtain. Regular box office hours are Tuesday-Saturday from 11am to 5pm (except some Holidays). To contact our Ticket Office, email tickets@artcenter.org or call 1-800-988-4253.

PROUD MEMBER OF



The Actors and Stage Managers employed in this production are members of Actors' Equity Association, the Union of Professional Actors and Stage Managers of the United States.



The Stage Hands are represented by the International Alliance of Theatrical Stage Employees, Moving Picture Technicians, Artists and Allied Crafts of the United States, its Territories, and Canada, AFL-CLO, CLC: Local #122



The Director hired for this production is a member of the Society of Directors & Choreographers, a theatrical union of the United States.

### Mission Statement

The mission of CCAE Theatricals is to preserve, strengthen and advance Musical Theater as a vital social and cultural platform by creating theatrical experiences of the highest professional standards. As both a laboratory for theatrical exploration and a producer of plays that expand the boundaries of theatrical form, CCAE Theatricals supports projects that are aesthetically, thematically and methodologically diverse. With our youthful spirit and eclectic, artist-driven approach, we provide an environment for the growth and education of theatre professionals, audiences and the Northern San Diego community at large.