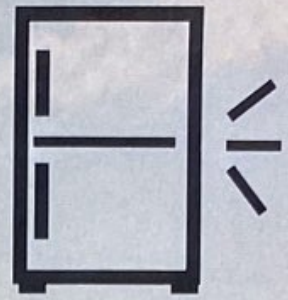


# SRT

SCRIPPS  
RANCH  
THEATRE



&



LOUD FRIDGE



**Mar. 24 - Apr. 16**

Fri & Sat 8pm • Sun 2pm

Preview Performance: Mar. 24

Opening Night: Mar. 25

# NEAT

by Charlayne Woodard  
directed by Claire Simba

TICKETS: 858.395.0573

SCRIPPSRANCHTHEATRE.ORG

SRT AND LFTG ARE 501(c)(3) NONPROFIT ORGANIZATIONS



Commission for  
Arts and Culture

Find us on



@scrippsranththeatre

@loudfridgetheatregroup

*Content Advisory: Neat deals with issues related to the civil rights era, police violence, and the treatment of those with cognitive impairments. A seizure is depicted on stage.*

NAME: \_\_\_\_\_

SEATS: \_\_\_\_\_

# Director's Notes

I am grateful to be coming back this season with Charlayne Woodard's marvelous play.

As I sit now reflecting on this process, I marvel at our capacity of resilience and love. This story and ours, separated by years of laughter and loss, are united by our common capacity of resilience, and our incommensurable ability to love.

Resilience to be, despite who we are and where we come from. Ability to love, and let the people in our lives affect and change who we become. Resilience to survive and thrive amidst violence and pandemics. Generosity to love each other enough to uplift one another and make room for change. Resilience to create, innovate and grow, and our shared love for theater. Resilience and love.

I invite you all to experience this story with an open heart, and the understanding that it could be your own, or that of a loved one. I hope you take this moment to celebrate yourself, and your neighbor, and everything that makes San Diego one of the most special places in America.

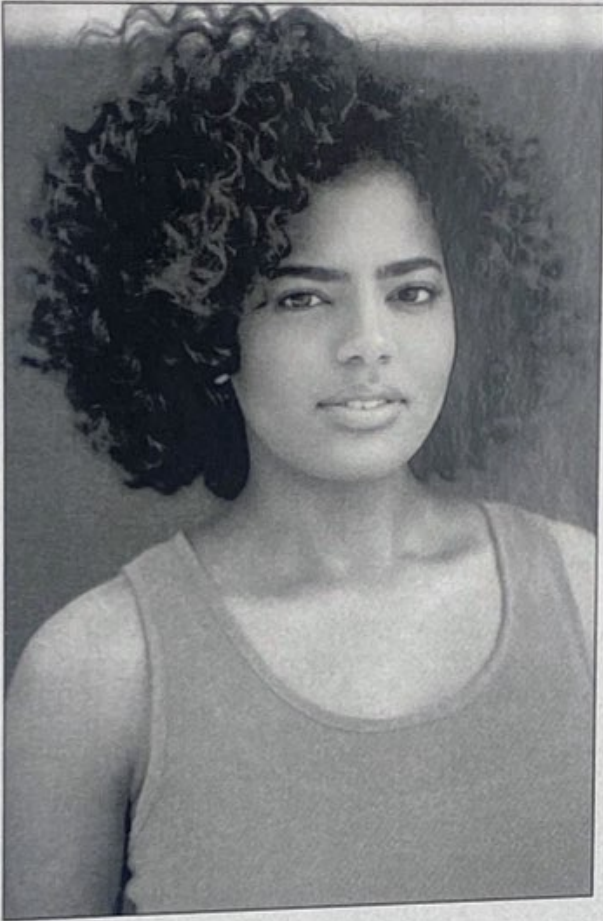
With all my love,  
*Claire Simba*



Photos by Ken Jacques



# CAST



## Kandace Crystal (Charlayne)

*she/her* Kandace is a multi-hyphenate theatre maker who graduated with a BFA in Acting from Florida State University and is currently focusing on obtaining her certification in Intimacy Direction. Selected acting credits include: *Searching for my Purple* (Memoir Showcase), *Black Lady Showcase* (Black Artist Collective/The Old Globe), *When We Were Young and Unafraid* (Patio Playhouse), and *A People's Cuban Christmas Tale* (Onstage Playhouse). She hopes to continue using her art to tell the stories of people whose stories need to be told. Feel free to keep up with her journey on social media, @KandaceCrystal on all platforms. Kandace extends extreme love and gratitude to her friends and family, especially her mother, Julie, for her continued support and to the Wizard for keeping life magical.

## Nicole Diaz-Pellot (Dancer/Choreographer)

Nicole is a dance educator and performance artist focusing on the holistic and inclusive practices of movement. A San Diego native, she started dancing at the age of five, later joining the San Diego Civic Dance Company. Nicole received her BFA in Dance from University of the Arts and was a Group Motion Dance Company member for four years, under the direction of the late Manfred Fischbeck. Additionally, Nicole has been a part of the Katherine Dunham Technique Certification community since 2014 and is in the process of receiving her Teacher Certification. Nicole has dedicated ten years to fostering inclusion through dance and currently teaches Creative Dance, Afro-Modern, and Dunham Technique classes. Outside of the dance studio Nicole is the Outreach Coordinator for Malashock Dance.



# NEAT

*by Charlayne Woodard*

This autobiographical drama centers around the life of Charlayne Woodard's aunt Beneatha, known as Neat. As an infant, Neat was accidentally fed camphor oil by her illiterate great-grandmother who was unable to read the bottle's label. As a result, Neat suffered severe brain damage. Alternating between Savannah, GA, and Albany, NY, Charlayne recounts memories of her child-like aunt and the profound change Neat brought to Charlayne's life. Neat, with her enormous love, energy, simplicity and magnificent clarity, teaches the young Charlayne what it is to cherish life. A magical, compelling, personal portrait of a young woman's coming of age, NEAT is the story of an urban African-American girl bursting into adulthood, experiencing first love, and embracing both Black-pride and feminism.

## SETTING

Garden City, GA and Albany, NY.  
1943-1972.

### ACT I

SCENE 1: Poison. 1943.

SCENE 2: Spell. 1958.

SCENE 3: The Flip. 1965.

SCENE 4: The Promise. 1967.

SCENE 5: Snow. 1967.

SCENE 6: Say it Loud. 1968.

### ACT II

SCENE 1: Saved. 1969.

SCENE 2: Bowman. 1969.

SCENE 3: Goldie. 1970.

SCENE 4: Flight. 1972.

*The show will run approximately 90 minutes with no intermission.*

*NEAT was originally produced by the Seattle Repertory Theatre, Seattle, Washington, and the Mark Taper Forum/Center Theatre Group, Los Angeles, California. "Right On, Be Free" is used with the permission of Chuck Griffin, the author and copyright holder.*

---

*Scripps Ranch Theatre welcomes you and thanks you for your support of live theater. We acknowledge that this land where we currently sit is Kumeyaay land. We are grateful to use this land to tell stories of all people and to build a strong and welcoming community.*

# PRODUCTION TEAM

DIRECTOR/COSTUMER	Claire Simba
STAGE MANAGER	Timothy Benson
PRODUCTION MANAGER	Ruth Russell
ANIMATOR	Leigh Akin
CHOREOGRAPHER	Nicole Diaz-Pellot
PROPS DESIGN/SCENIC PAINTER	Alyssa Kane
PROJECTIONS	Ted Leib
SOUND DESIGN	Omar Ramos
LIGHTING DESIGN	Lindsay Alayne Stevens
LOUD FRIDGE THEATRE GROUP	Eboni Muse
NOISEMAKERS	Kate Rose Reynolds
	William BJ Robinson
	John Wells III

**Claire Simba** (Director/Costumer) is a director, actor, and writer based in Los Angeles, California. Originally from Cameroon, she worked in Paris, France, before moving to the United States. Claire is the recipient of the Shiley Endowed Scholarship and the Craig Noel MFA award. She has developed work with: Theatre de l'Orme, Theatre du Nord-Ouest, Moxie Theater, Scripps Ranch Theater and The Old Globe Theater. Claire is a believer in collaborative processes and new forms. She loves to highlight movements and the imagination. She is passionate about black stories, reconstructing classics, stories for and about women, genre-defying multimedia work and film. MFA Acting: USD/Old Globe, BFA Theatre Sorbonne University, Certificate in Theatre: Stella Adler, NYC.

**Timothy Benson** (Stage Manager) is a combat veteran of the Marines who has foregone the seasons of his native New England for the sunny locale of San Diego and continued to pursue his theatrical aspirations. He's worked all over San Diego County in theaters such as the Welk Resort, Diversionary, and SRT, just to name a few. He's worked in quite a few shows, such as *Evil Dead: The Musical*, *Arsenic and Old Lace*, and *I Hate Hamlet*. The show is about to start, he hopes you think it's... neat!

**Leigh Akin** (Animator) is so excited to be the animator for *Neat!* She is the creativity manager at Westminster Presbyterian where she creates videos and downloadable content to accompany their events and programming. Last year she illustrated a meditation and recipe guide series published by the Presbyterian church as well as an online children's book called "There's Mustard in my Pocket!" During quarantine she produced and animated a series of cooking videos from her tiny studio apartment called: "Leigh Sings Songs and Makes Waffles." You can check out more of her work at: [LeighEllenAkin.com](http://LeighEllenAkin.com), and follow her on Instagram @alittleradishmedia.

**Alyssa Kane** (Props Design/Scenic Painter) *she/her/hers* Alyssa is SRT's resident scenic designer. Some of her favorite past productions at SRT are *The Outsider*, *I Hate Hamlet*, and *Move Over Mrs. Markham*. Other recent projects include scenic design for *Ripped* (Loud Fridge) and *Yellow Wallpaper* (Write Out Loud). Recent prop design projects include *The Ferryman* (New Village Arts), *The Mystery of Irma Vep* (Diversionary), and *The Great Khan* (SD Rep). Alyssa is an operational board member at Scripps Ranch Theatre. She is also a performer and founding member of a burlesque and variety troupe in Southeast Alaska.

(continued)

# PRODUCTION TEAM

(continued)

**Omar Ramos** (Sound Design) received his Master of Fine Arts degree in Theatre Design with a dual focus in lighting and sound from the University of California, San Diego (UCSD). His design and associate design credits from across the U.S. include the Goodman Theatre and Chicago Shakespeare Theater (Chicago), McCarter Theatre Center (Princeton, NJ), Oregon Shakespeare Festival (Ashland), and San Diego Repertory Theatre. He is invested in theatre that outreaches to children, veterans, survivors of domestic abuse, and their families. He also gravitates to work that sheds light on the politics of race and serves LGBT+ communities. More information about his work can be found at <https://www.omarramosdesign.com>.

**Ruth Russell** (Production Manager) is SRT's resident producer, a role that involves some of her favorite things: communication, problem solving and connecting the dots! SRT PM credits: *The Dining Room*, *The Taming*, *The Outsider*, and *Extreme Home Makeover*. Ruth studied acting at the University of St. Thomas and has trained locally with Jacqueline Ritz, Justin Lang and Jo Anne Glover. Ruth's next acting project is *Rose and Walsh* at Point Loma Playhouse. Select acting credits: *Return Engagements* (SRT), *7.9 Seconds* (The Conrad), *Murder on the Nile* (PowPAC), *The Crucible* (Pickwick), *Dracula* (Coronado Playhouse). Ruth occasionally spends time with her husband and adorable dogs. IG: @yogafullyruth and @citydoggosd.

**Lindsay Alayne Stevens** (Lighting Design) is a multidisciplinary designer, artist, and writer. She holds an MFA in Theater Design from UCSD ('21) and BFAs with High Honors from Marlboro College in Theater, Photography, and Writing ('17). Since receiving her degrees she has designed for La Jolla Playhouse, InterAct Theater Company, terraNOVA Collective, Surflight Theatre, Milburn Stone Theater, and Bootless Stageworks. More information can be found at [lastevensdesign.com](http://lastevensdesign.com).

## LOUD FRIDGE THEATRE GROUP NOISEMAKERS (OPERATIONS TEAM)

**Eboni Muse** (Director of Special Events) *she/her* Eboni is the founder of Artists 4 Black Lives San Diego and the vice president of the San Diego Black Artist Collective. Selected Credits: *Original USA Gospel Singers & Band Tour* w/Frank Serr Showservice International, *Xanadu: In Concert* at Sacramento Theatre Company, *Freedom Riders: A Civil Rights Musical* Cast Album, *Joseph and the Amazing Technicolor Dreamcoat* at California Center for the Arts Escondido, *Beehive* at New Village Arts, *Undertow* with New Match Collective, *Little Shop of Horrors* at New Village Arts (Broadway World San Diego Award: Vocalist of the Decade), *For Colored Girls Who Have Considered Suicide When the Rainbow is Enuf* with La Jolla Theatre Ensemble, *Hairspray* with San Diego Musical Theatre (Craig Noel Award: Outstanding Featured Performance in a Musical), *Father Comes Home from the Wars* at the Horton Grand Theatre, *O' Wondrous Night* and *Shamu Christmas Miracles* at SeaWorld San Diego.

**Kate Rose Reynolds** (Director of Operations) *she/her* Kate is an Actor, Director, Designer, Technician, and Producer. Kate is an alumnus of Yale University and the resident Technical Director for the Chequamegon Children's Theatre. Recent directing credits include *Ripped*, *The Pandemical Diaries*, *Straight* (Loud Fridge Theatre Group), *Mala*, and the world premiere of *It's a Small World* (Bristol Valley Theatre). She has also served as the assistant director for *Abigail's Party* (Backyard Renaissance) and *The King's Legacy* (Bristol Valley Theatre), and co-directed the current production of *gUnTOPIA* with Roustabouts Theatre Company. She was most recently seen onstage in *Iron* (Roustabouts, Craig Noel award for Outstanding Featured Performance in a Play). She also stars in the independent horror film *Soul to Keep*, currently streaming on various platforms. [www.katerosereynolds.com](http://www.katerosereynolds.com).

(continued)

# THE PRODUCTION TEAM

(continued)

**William BJ Robinson** (Director of Community Outreach) *he/they* William is a Black and Puerto Rican queer arts educator, composer, music director, and performer. They host KPBS/arts, a TV program on KPBS that focuses on art & culture across the country, and Tough Talk, a virtual platform that brings people together to work on getting comfortable with the uncomfortable aspects of life. They also currently serve as the church choir director at Christ United Presbyterian Church and on the boards of Cappella Gloriana and Loud Fridge Theatre Group. Select Credits: *The Pandemusical Diaries* w/Loud Fridge Theatre Group at Diversionary Theatre and w/San Diego International Fringe Festival at Marie Hitchcock Puppet Theatre, Creator/Composer for *Art In Conversation: Gordon Parks* w/Continuum Arts, Piano Man in *James Bond: The Musical* w/Lonesome Whistle Productions at Coronado Playhouse, *Loving Cupid* Original Cast Album, Music Director for *Songs For a New World* w/Teatro San Diego, Creator/Composer for *Acts of Matter* w/Continuum Arts, Composer for *Refractions: A Collection of Human Anthems* w/Blindspot Collective, Creator/Composer for *Art In Conversation: Langston Hughes* w/Continuum Arts, Composer for *Superheroes Anonymous* w/Village Church Community Theater.

**John Wells III** (Director of Marketing) *he/him* John is an actor, producer, novelist, and Author of the YA Contemporary Fantasy Series *The Kalib Andrew's Chronicles*. John is an alumnus of the Savannah College of Art and Design and a graduate of California Baptist University. Select credits include Stage: *Baskerville* (Lambs Players), *Miracle on 34th Street*, *Memphis* (Moonlight), *Joseph and The Amazing Technicolored Dream-coat* (CCA), *The Wiz* (Teatro San Diego), *Straight* (LFTG), *All In The Timing* (OSP), *BASH* (LPT), *A Midsummers Night Dream*, *Twelfth Night* (Intrepid), *Cardboard Piano*, *The Mystery of Love and Sex* (Diversionary), *Dogfight*, *A Chorus Line* (Chance), *Sister Act* (MTW), *Hairspray*, *Sister Act* (Performance Riverside), *Monsters in the American Cinema*, *Communicating Doors* (SRT). *Staged readings & Workshops: Les Switch* (Diversionary), *Swimming While Drowning* (Amigos Del Rep), *Froggy*, *SLAM* (LJP).

## LFTG OPERATIONAL BOARD

Clay Greenhalgh  
Kate Rose Reynolds  
Miki Vale

Eboni Muse  
William BJ Robinson  
John Wells III

## LFTG VOLUNTEER STAFF

Usher Coordinator

Judy Dolbey

## ABOUT LOUD FRIDGE THEATRE GROUP

Loud Fridge Theatre Group is a collective of multi-hyphenate artists who are cooking up diverse stories, fresh ideas, and tasty experiences that can nourish our community. We believe that joyful collaboration informs and expands the creative process. We believe that there is room in our fridge for everyone. And we believe in telling stories that are bold, honest, and diverse - and telling them LOUDLY. Learn more at [www.loudfridge.com](http://www.loudfridge.com) or @loudfridgetheatregroup on all platforms.

*Loud Fridge Theatre Group is a registered non-profit 501(c)(3). All donations are tax-deductible.*

# SRT BOARD OF DIRECTORS

MANAGING DIRECTOR	George Moy
TREASURER	Nick Torres, CPA
SECRETARY	Leigh Akin
ARTISTIC DIRECTOR	Jill Drexler
PRODUCING DIRECTOR	Barbara Barber
AUDIO SUPERVISOR	Ted Leib

# SRT BOARD ASSOCIATES

Anthony Hamm, Alyssa Kane, Kate Reynolds, Judy Splitgerber,  
Tom Splitgerber, Casey Tibbitts

# SRT STAFF

PATRON SERVICES MANAGER	Dani DeCarlo
PUBLIC RELATIONS DIRECTOR	Susan Clausen
DEVELOPMENT DIRECTOR	Caitlyn McTaggart
OPERATIONS MANAGER	Leigh Akin
PRODUCTION MANAGER	Ruth Russell
AUDITIONS & MARKETING MANAGER	Cristyn Chandler
GRAPHIC DESIGNER	Jacqueline Gregory
LIGHTING TECH CONSULTANT	Mitchell Simkovsky
VOLUNTEER COORDINATOR	Jerry Neimark

---

# THANK YOU SRT DONORS!

**Your support makes our theater-making possible!** We extend our sincere gratitude to all of our donors for their support and commitment to bringing high-quality productions to the SRT and LFTG stages. It is the generosity of these individuals that allows SRT to continue bringing incredible performances and impactful outreach programs to our community. Thank you!

# GIVING BACK TO THE ARTS

A law went into effect in 2020 (AB-5) that impacts the way theatres throughout California pay performers and production teams. As a result of this, plus inflation, our production costs have skyrocketed. Please consider making a donation or choose to sponsor one of our actors or crew members in Neat. Visit [scrippsranchotheatre.org/donate](https://scrippsranchotheatre.org/donate) or [loudfridge.com/donate](https://loudfridge.com/donate) for more information.

*SRT and LFTG are 501(c)(3) nonprofit organizations.*



# THANK YOU, SRT DONORS!

We extend our sincere gratitude to the following donors for their generous support. It is only through private contributions that we are able to continue bringing high-quality productions to the stage, and live theatre to the community.

## PRODUCTION ANGEL

Anne & Dave McClure  
Robert Kilian

## THEATRE STAR

Phyllis Gundry

## DIRECTOR DEVOTEE - \$1,000-\$2,499

Cyla Andrus & Darrell Mead  
Ellen & Bob Svatos  
Jacqueline & F.D. Talbert  
Judy & Tom Splitgerber  
Karyn Farr & Don Berkebile  
Scripps Ranch Welcome Club

## ACTING ENTHUSIAST - \$600+

Jackie Ritz  
Marty & Allan Salkin

## SUPPORTING PLAYER - \$400+

Berna & Richard Danziger  
Bridgette & Ty Young  
Gail & Richard Harriss  
Jan & Dave Stormoen  
Jane & Bob Petering  
June & Richard Nygaard  
Kathy & Brian Allman  
Lynn & Rick Parke  
Paul Sodeman  
Wilma & F.R. George

## COSTUME CAMEO - \$100+

Adele Gerstenhaber  
Arlene & John Sherwood  
Arlene & Michael Bardin  
Becky & Bruce Carlquist  
Bev & Doug Smay  
Bill DeRisi  
Carol & Dr. Fred Orton  
Daniel McLellan  
Donna Gangi  
Jan Otis  
Joan & Arnold Gass  
Kathy Brombacher  
Katie & Michael Acampora  
Linda & Kent Hildreth  
Lynn & Will Cooper  
Linda Vasconsellos  
Mary Ann & Hilliard Harper  
Maureen Wiskerchen  
Nancy Thompson  
Phil Johnson  
Sandy & Ollie Smoot  
Sharon & Thomas Harpley  
Steven Oberman  
Susan Boland  
Susan & Pence Parsons

## SPECIAL THANKS

SRT and LFTG would like to thank Danielle Bunch, Jaeonnie Davis-Crawford, Irene Gregory, Portia Gregory, Jennie Hamilton, Jasmine January, Jasmine L. Sadler, Milena Sellers Phillips, Alyce Smith Cooper, Diona Tabs and Amira Temple for lending their faces and voices to the opening of our show. Special thanks to Ken Jacques for the photos and Gwenmarie Hilleary for keeping our costumes clean.

## UP NEXT...

### Lost in Yonkers

*by Neil Simon*

May 19 - June 11

(June 4 - no show)

(June 5 - Industry Night)