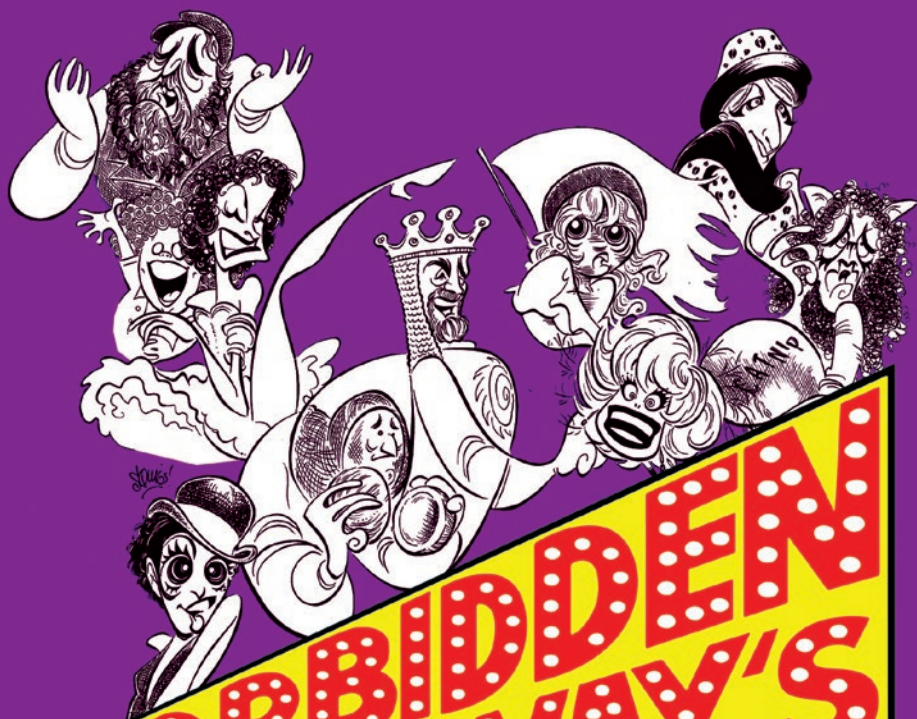


NORTH COAST REPERTORY THEATRE

presents



FORBIDDEN BROADWAY'S GREATEST HITS

Created and Written by
GERARD ALESSANDRINI

APRIL 20 – MAY 22, 2022

North Coast Repertory Theatre
intimate theatre

A Not-For-Profit Regional Theatre | David Ellenstein, Artistic Director

"This drama hums with dark humor
and powerful emotion."

the outgoing tide

by Bruce Graham

WEST COAST PREMIERE

JUNE 8 – JULY 3

Directed by Nike Doukas

Fiercely proud and battling the torments of an aging mind and an uncertain future, one man devises a plan, but his family has other ideas. Deftly moving between present and past, playwright Bruce Graham weaves a highly relatable story sprinkled with surprising humor and powerful emotions. This touching family drama poses thought-provoking questions about personal choice and what it means to truly love someone.

northcoastrep.org | Box Office: (858) 481-1055

Welcome!



Welcome to the fifth play of our 40th anniversary season, FORBIDDEN BROADWAY'S GREATEST HITS! Who doesn't love a great show tune? But even better is a hysterical parody of the cherished Broadway classics. Just as Gerard Alessandrini has reinvented the lyrics to these entertaining songs, the staff and board at North Coast Rep have reinvented ourselves and reimagined our art form to persevere through the dark times and emerge stronger than ever. We could not have done this alone, in fact we have been inspired by the support of our loyal subscribers and donors who have shown us that they believe in our work, which has propelled us to create some amazing theatre. This accomplishment was a group effort, and so is any production of a musical. Our director, designers (sets, costumes, lights, sound and props), musical director, technical craftspeople and crew have collaborated in new and innovative ways. Our development and marketing staff have scoured the landscape for new funding opportunities from foundations and government assistance and new ways to promote to a wider audience, garnering national press in the process. We are proud to be a leader in our industry, operating from our little corner of the world right here in Solana Beach, and we do it all for you, our audience. Thank you for sticking with us through these past few years, and we promise great productions going forward. And now, we are once again gathered in the theatre for some non-stop laughs from the opening moment to the final applause!

Welcome back!

Bill Kerlin
Managing Director

DIRECTOR'S NOTE



Little did I know when I entered that room in the Park Plaza Hotel in Boston, MA to audition for "Forbidden Broadway" in 1985, that I would begin a journey that would take me across the United States and all around the world; performing, directing, and having the most joyous time of my life with a show that offered never-ending fun and laughs! It's kept me young all these years, and brought me rich friendships and fantastic memories I'll always treasure.

This is the 20th production of "Forbidden" that I've directed, and I couldn't be more pleased to bring the show to North Coast Rep here in San Diego. I met with Artistic Director David Ellenstein back in 2019, in a cafe on 42nd street in NYC, to discuss the possibility of my directing the show here in the summer of 2020. Well, we all know what happened when that year rolled around; but David's determination to have our revue grace his stage never wavered, and happily, here we are today!

How is it that Gerard Alessandrini, creator of this show, has taken so many jabs at Broadway shows and stars, and gotten away with it? The secret is that he always did it with love, and the stars themselves recognized that. Being able to laugh at yourself is a sign of an optimistic personality, and having a sense of humor. I personally spoke to many of the celebrities we had spoofed on stage after the curtain came down (Chita Rivera, Carol Channing, Alan Cumming, Lin-Manuel Miranda, Stephen Sondheim, among others), and all were quite charmed and had a big laugh at being skewered!

Experience the merriment and cleverness of Gerard's Tony Award winning lyrics, brought to you by four seasoned performers of the 'Forbidden' world. You're about to travel to... "that Neverland where the hits get panned"! Enjoy.

William Selby
William Selby
Director

NORTH COAST REPERTORY THEATRE

David Ellenstein, Artistic Director | Bill Kerlin, Managing Director

PRESENTS

FORBIDDEN BROADWAY'S GREATEST HITS

CREATED AND WRITTEN BY
GERARD ALESSANDRINI

DIRECTED BY **WILLIAM SELBY**

MUSICAL DIRECTOR **Elan McMahan**

SET DESIGN **Marty Burnett**

LIGHTING DESIGN **Matt Novotny**

COSTUME DESIGN **Dustin Cross**

COSTUME CONSULTANT **Elisa Benzoni***

SOUND DESIGN **Aaron Rumley**

PROPS **Phillip Korth**

STAGE MANAGER **Cindy Rumley***

CAST

PERFORMER **William Selby***

PERFORMER **Cathy Barnett***

PERFORMER **Trisha Rapier***

PERFORMER **Edward Staudenmayer***

MUSICIAN

PIANIST **Elan McMahan**

There will be a 15 minute intermission

**Season 40 has been made possible by the
generosity of The Step Family Foundation**

**This production has been made possible
by the generosity of Cathy & Richard Buller**

FORBIDDEN BROADWAY'S GREATEST HITS is presented through special arrangement with and all authorized performance materials are supplied by Theatrical Rights Worldwide (TRW), 1180 Avenue of the Americas, Suite 640, New York, NY 10036. (866) 378-9758 www.theatricalrights.com

Produced by special arrangement with John Freedson and Harriet Yellin.



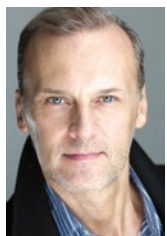
*The actor or stage manager appears through the courtesy of Actors' Equity Association, the union of professional actors and stage managers in the United States. | Actors' Equity Association (AEA), founded in 1913, represents more than 45,000 actors and stage managers in the United States. Equity seeks to advance, promote and foster the art of live theatre as an essential component of our society. Equity negotiates wages and working conditions, providing a wide range of benefits, including health and pension plans. AEA is a member of the AFL-CIO, and is affiliated with FIA, an international organization of performing arts unions. The Equity emblem is our mark of excellence. www.actorsequity.org



PROFILES



GERARD ALESSANDRINI (Creator, Writer, Director) Spamilton: (Creator/Writer/Director): New York, London, Chicago, Los Angeles, National Tour. Forbidden Broadway (creator/ writer/ director): 25 editions all over the world. Also *Forbidden Hollywood* (writer/director), *Madame X: The Musical* (NYMF) (co-writer/director), *The Nutcracker & I* (lyrics), Maury Yeston's review *Anything Can Happen in New York*. Television: special material for Carol Burnett, Angela Lansbury and Bob Hope. Film: "Aladdin," "Pocahontas" (vocals). Recordings: 12 *Forbidden Broadway* cast albums, *Forbidden Hollywood* & *Spamilton* cast albums. Special Lyrics: Barbra Streisand Duets 2. Awards: Drama League Lifetime Achievement Award, Obie Award, 2 Lucille Lortel Awards, 7 Drama Desk (2 Best Lyrics, 2 Special Achievement, 3 Best Musical Revue), and a Special Tony Award for Lifetime Achievement in Theatre.



WILLIAM SELBY* (Director/Performer) Bill performed for many years in the Off-Broadway smash revue, *Forbidden Broadway*, and has directed 19 productions of the show across the country, including the 2012 Ovation Award winner for 'Best Musical' in Long Beach, CA. Also Off-Broadway (as performer): *The Daring Duo* (Bridge Theatre), *Nerds* (NY Musical Theatre Festival), *Forbidden Hollywood* (Triad), *Juba* (Vineyard), *The Apple Tree* (York). NY Workshop: *Finding Nemo* for Disney (Mr. Ray/Gill). Regional: *Bernadette in the Gateway* and Ogunquit Playhouse co-productions of *Priscilla, Queen of the Desert* (Broadway World Award nomination), Luther Billis in *South Pacific* at the Ivoryton Playhouse (Broadway World & CT Critics Circle Award nominations for Outstanding Supporting Actor), *Barrymore*, *The Presidents* (with Rich Little), *Hot n' Cole*, *The All Night Strut*. He comes to North Coast Rep direct from Sarasota, FL, where he was appearing in the revue, *Laughing Matters, Vol. 6*, with Florida Studio Theatre. He performed three other revues there in the past, along with a most joyous production of *Bright Star*, playing Daddy Cane/Stanford.

THIS ARTIST SPONSORED BY CYNTHIA & MARTIN DAVIS



CATHY BARNETT* (Performer) is delighted to return to North Coast Rep! She has toured nationally and internationally in productions of both *Forbidden Broadway* and *Forbidden Hollywood*. Cathy is a professional actress and voice-over artist based in Kansas City, Missouri, where she has appeared in numerous productions including *The Producers*, *Sweeney Todd*, *The Addams Family Musical*, *Hairspray* and *Grey Gardens*. She most recently portrayed Minnie Pearl in the Kansas City world premiere of *Johnny and June*, a Johnny Cash tribute concert. She voices the Hallmark greeting card character, "Maxine," and brought her to life in the new live musical, *Maxine's Christmas Carol*.

THIS ARTIST SPONSORED BY BETTE JOHNSON



TRISHA RAPIER* (Performer) is thrilled to be making her North Coast Rep debut with *Forbidden Broadway*. Trisha's Broadway and National Tour credits include: *The Boy from Oz* starring Hugh Jackman (Liza Minnelli u/s and performed), *Sister Act* (Sister Mary Martin of Tours, Mother Superior u/s and performed) *The Who's Tommy* (Mrs. Walker u/s and performed), and *Forbidden Broadway/Hollywood* (Barbra Streisand, Marlene Dietrich, etc.) Some Off-Broadway credits include: *The World Goes 'Round*, *Sessions* (Mary), *Lorenzo* (Anna Grah), *Her Song at Birdland*, *Shout! The Mod Musical*, *Nerds:// A Musical Software Satire* (Myrtle), *NEWSical* (Trisha), *Golf: The Musical* (Trisha) and *Forbidden Broadway*. Trisha's favorite regional credits are Diana in *Next To Normal*, Rose Stopnick in *Caroline, or Change*, Vicki Nichols in *The Full Monty*, Eva in *Evita*, Sally Bowles in *Cabaret*, Ellen in *Miss Saigon*, Audrey in *Little Shop of Horrors*, Adelaide in *Guys and Dolls*, and Agnes in *Agnes of God*. She can be seen on Cartoon Network's "Delocated." She is a UCLA graduate and the recipient of the Carol Burnett Award and the Spotlight Award of the Los Angeles Music Center. Trisha is currently working on a one woman show celebrating the music and careers of Linda Ronstadt, Liza Minnelli and Barbra Streisand. www.TrishaRapier.com

THIS ARTIST SPONSORED BY STANLEY SIEGEL



EDWARD STAUDENMAYER* (Performer) recently reopened Broadway in *Girl from the North Country*. He was starring in the National Tour of *Anastasia* as Vlad Popov when the theaters shut down in March 2020. Broadway: *Wonderland*, *Martin Short: Fame Becomes Me*. Tours: *Phantom of the Opera*, *Anything Goes* (Helen Hayes Nomination) *Beauty and the Beast* (National Theater Award Nomination), *Joseph...*, *Radio City Christmas Spectacular*, *The Scarlet Pimpernel*. Other: 28 years with *Forbidden Broadway* (3 Cast Recordings) *Spamalot* (Vegas), *Spamilton*, *South Pacific*, *A Room With A View*, *Children of Eden*, *Bye Bye Birdie*, *1776*, *Exactly Like You*, *The Great Ostrovsky* (Barrymore Nomination), *Breaking Up Is Hard To Do*, *9 to 5*, *Newsical*, *The Nutcracker and I*, *On The Twentieth Century*, *Noises Off*, *Jane Eyre*, *Gigi*, *The Producer's*, *Cats* (Hamburg). Also "MTV's Celebrity Deathmatch" and upcoming feature film "A Thousand and One." UCLA Graduate where he received the Carol Burnett Award. AEA, SAG, AFTRA, AGVA member.

THIS ARTIST SPONSORED BY BEVERLY & HERB LIBERMAN

PROFILES



ELAN MCMAHAN (Musical Director/Pianist) is pleased to make her NCRT debut. She has been an active part of the musical scene in San Diego for over 30 years. Her work is regularly heard on many local stages, including The Old Globe and Moonlight Stage Productions. She has received three Craig Noel Outstanding Musical Direction Awards from the San Diego Critics Circle, most recently for Moonlight's 2017 production of *In the Heights*. Elan holds music degrees from Brigham Young University and the St. Louis Conservatory of Music. She is an associate faculty member at MiraCosta College.

CINDY RUMLEY* (Stage Manager) Credits include: *Desperate Measures, Dancing Lessons, Another Roll of the Dice, All in the Timing, Holmes & Watson, A Funny Thing..., How The Other Half Loves, Last of the Red Hot Lovers, The Spitfire Grill, Laughter on the 23rd Floor, Ain't Misbehavin', Way Downriver, William Faulkner's 'Old Man', Chapatti, Side By Side By Sondheim, Freud's Last Session, Mandate Memories, Dames at Sea, Two By Pinter, and Visiting Mr. Green* with North Coast Rep. Cindy holds an M.F.A. in stage management from UC Irvine.

CREATIVE STAFF

MARTY BURNETT (Set Design) Resident Designer at North Coast Rep since 1992 and has designed more than 200 productions for the theater. Other design venues include Sahara and Hacienda hotels in Las Vegas, Claridge Hotel, Atlantic City and Drury Lane Chicago.

MATTHEW NOVOTNY (Light Design) is pleased to be designing another show for North Coast Rep, where he has designed close to forty shows over the past seven years. Matthew is currently the Lighting Designer in Residence for San Diego Musical Theatre as well as North Coast Rep, and his work can be seen at a wide variety of theatres across San Diego. Matthew holds a B.A. in Technical Theatre from San Diego State and a master's degree in Lighting Design from Boston University. Matthew is married to his beautiful wife Amanda, with 5 AMAZING children: Ragan, Harper, Heston, Maddex and Harrison.

DUSTIN CROSS (Costume Design) is so happy to be back with his *Forbidden Broadway* family! Off Broadway (Select): *Spamilton* (New York, Chicago, Pittsburgh, LA, London, National Tour), *The Office* (NY, National Tour) *The Glass Menagerie, A Midsummer Nights Dream, Cougar The Musical, The Other Josh Cohen, Forbidden Broadway: Comes Out Swinging*. Regional (Select): *The Witches of Eastwick, Billy Elliot, Cinderella, Sister Act, Grumpy Old Men, The Little Mermaid, Noises Off, From Here to Eternity, Heartbreak Hotel, West Side Story, Hello Dolly, The Christmas Rose* (Carnegie Hall), *Prince of Egypt*, The NY Knicks Dancers and The NY JETS Drumline. Film: "Celtic Heart" (PBS), "Buttons" (starring Dick Van Dyke and Angela Lansbury). Enjoy! dustincrossdesigns.com.

ELISA BENZONI* (Costume Consultant) is thrilled to be working on her fourth season at North Coast Rep including numerous Craig Noel nominated productions. Elisa has also worked on over a hundred productions across Southern California with theatres such as The Old Globe, La Jolla Playhouse, Geffen Playhouse, South Coast Repertory Theatre, Laguna Playhouse, San Diego Repertory Theatre, Diversionary Theatre and New Village Arts. Being Italian-born, Elisa has also had the opportunity to work and perfect her craft in Europe. Elisa holds a costume design M.F.A. from UCSD where she currently is an adjunct professor. www.elisabenzoni.com

AARON RUMLEY (Sound Designer) has worked on over 120 shows at North Coast Rep, over 50 as a stage manager, over 20 as a designer.

PHILLIP KORTH (COVID-19 Compliance Officer/Props) is an actor, writer, craftsman, and educator. He earned BAs in Acting and Creative Writing from Western Michigan University and his MFA in Acting from the University of Connecticut. He is a Veteran of the United States Marine Corps and served two tours of duty in Iraq. In addition to designing and managing props for NCRT, Phillip is also the Education Associate at The Theatre School @ North Coast Rep.

CREW

DARLENE BALCZAK

The videotaping or other video or audio recording of this production is strictly prohibited.

*This event is supported in part by the California Arts Council, a state agency.
Learn more at www.arts.ca.gov.*



**Help support World Class Professional Theatre
by donating to North Coast Rep!**

NORTH COAST REPERTORY THEATRE BOARD OF DIRECTORS



Marc Tayer⁺
President



Marilyn Tedesco^{*+}
Vice President



Elizabeth Tresp⁺
Vice President



Berit Durler⁺
Treasurer



Judy Wheatley⁺
Secretary



Sharon Stein^{*+}
Immediate Past President



Steve Chapman



Marion Dodson^{*}



David Ellenstein



Peter House



Richard H. Leib, Esq



Beverly Liberman



Patty Moises



Susan Roth



Katy Tanghe



Karen Wilder



Hannah Step
Director Emeritus

* Denotes past President + Denotes Executive Committee member

Photography: Aaron Rumley, Berit Durler photo courtesy of San Diego Zoo Global



**"CRITIC'S
CHOICE!"**

JOHNNY CASH, ELVIS PRESLEY,
CARL PERKINS & JERRY LEE LEWIS

SAN DIEGO UNION TRIBUNE

THRU JUNE 26 LAMBSPLAYERS.ORG • 619.437.6000

**GUARANTEE YOUR TICKETS FOR
THREE MUST-SEE SHOWS**

A Broadway-bound celebration

Bob Fosse's Dancin'

Choreography by Bob Fosse
Direction and musical staging by Wayne Cilento

April 19 - May 29

Broadway's hip-hop improv comedy event

Freestyle Love Supreme

Conceived by Anthony Veneziale
Created by Thomas Kail, Lin-Manuel Miranda, and Anthony Veneziale
Directed by Thomas Kail

June 21 - July 10

A Broadway-bound adaptation of India's beloved romantic-comedy film

Come Fall in Love - The DDLJ Musical

Directed by Aditya Chopra
Book and lyrics by Nell Benjamin
Music by Vishal Dadlani and Shekhar Ravjiani
Choreography by Rob Ashford

September 1 - October 16

3-play packages start at \$116

THE OLD GLOBE (619) 23-GLOBE • TheOldGlobe.org

Kaifa Mullady, Utkarsh Ambudkar, Anthony Veneziale, Ashley Pérez Flanagan, and Aneesa Folds with musician Kurt Crowley in Freestyle Love Supreme. Photo by Joan Marcus.

North Coast Rep Staff

David Ellenstein

Artistic Director

Bill Kerlin

Managing Director

Benjamin Cole

*Director of Theatre School,
Education & Outreach*

Nancy Richards

*Director of Marketing
& Public Relations*

Marty Burnett

Technical Director

Christina LeBlanc

Controller

Jeff Needham

*Patron Services & Information
Technology Director*

Aaron Rumley

Production Manager

Christopher Williams

Associate Artistic Director

Denise Young

Director of Development

Nicolas Castillo

Office Manager

Matt FitzGerald

Associate Production Manager

Geoffrey Ulysses Geissinger

Development Associate

Gabrielle Holley

*House Manager Supervisor/
Volunteer Coordinator*

Phillip Korth

Education Associate

Noelle Marion

Marketing Assistant

Michelle Millum

Box Office Manager

Fran Morilak

Bookkeeper

Michael Podd

Sales

Andrea Chatwood

Alyssa Cook

Patte Hughes

Anissa Ruiz

House Management

Melani Bruce, Lead Rep

Andrea Chatwood

Anissa Ruiz

Patron Services

Nicolas Castillo (*Education Asst*)

Deb Daly, Phillip Korth

Gina McKee, Kayla Rene

Roxas Shepherd

Theatre School Teaching Artists

NORTH COAST REPERTORY THEATRE

North Coast Repertory Theatre, under the artistic leadership of David Ellenstein since 2003, is a professional Equity theatre currently celebrating its 40th Season. North Coast Rep has received critical acclaim from media and audiences alike, and has evolved into one of the area's leading performing arts organizations. North Coast Rep prides itself on employing the majority of its actors from Actors' Equity Association for its high quality, award-winning productions, and staging works by established and emerging playwrights. Throughout its history, North Coast Rep has created a platform where artist and audience thrive through the intimacy of live theatre, recognizing the power of theatre to challenge complacency, revitalize the imagination, nurture the unexpected and embrace the variety and diversity in our lives.

GENERAL INFORMATION

Theatre Address

987 Lomas Santa Fe Dr.
Suite D
Solana Beach, CA 92075

Box Office

Hours are Monday-Sunday
Noon to 4 p.m.
Performance days
Noon to curtain.
858.481.1055
Fax 858.481.1527

Group Sales

858-481-2155 ext. 202

Administrative Office

977 Lomas Santa Fe Dr.
Suite E
Solana Beach, CA 92075
Hours are: 9 a.m. to 5 p.m.
858.481.2155
Fax 858.481.0530

Website

northcoastrep.org

Restrooms

Accessible restrooms are located in our cafe and additional restrooms are located upstairs in the courtyard area.

Parking

There is plenty of safe, free parking directly in front of the theatre and additional parking is available behind the theatre.

Late Arrivals

Late arrivals will be seated at the discretion of the house manager. Latecomers may be asked to wait until intermission to be seated or reschedule. We encourage our patrons to plan ahead as weather and traffic may delay your arrival.

Show Content & Age Restrictions

North Coast Rep does not offer advisories about subject matter, as sensitivities vary from person to person. If you have any questions about content, age-appropriateness or stage effects [such as strobe lights or theatrical fog] that might have a bearing on patron comfort, please contact the box office at (858) 481-1055. All patrons must have a ticket regardless of age. No children under 6 years of age will be admitted to main stage productions. NORTH COAST REP IS NOT RESPONSIBLE FOR LOST OR STOLEN ITEMS.

In consideration of your fellow patrons...

For your safety and as a courtesy to the performers, please remain seated until the performance has ended and the house lights have come on. Please turn off cell phones, watch alarms and beepers. Heavy fragrances (perfumes/colognes) can be distracting and cause allergic reactions for some guests. Please be considerate of others. Use of camera and recording devices is not permitted in the theatre. Smoking is permitted only in the outdoor courtyard of the theatre. Use of a ticket constitutes acknowledgement of willingness to appear in photographs taken in public access areas of the theatre and releases it and all others from liabilities resulting from such photographs.

DAVID ELLENSTEIN

ARTISTIC DIRECTOR

Born into a theatrical family, David has worked in theatres across the country. Before joining North Coast Rep in 2003 he served as Artistic Director for the Los Angeles Repertory Company and the Arizona Jewish Theatre Company (AJTC). A veteran of over 250 theatrical productions, directorial favorites include:

North Coast Rep – *The Homecoming*, *Ben Butler*, *Dr. Glas*, *Becoming Dr. Ruth*, *Einstein Comes Through*, *Trying*, *An Iliad*, *A Christmas Carol*, *Same Time*, *Next Year*, *The Outsider*, *All in the Timing*, *Holmes & Watson*, *A Funny Thing Happened on the Way to the Forum*, *The Father*, *This Random World*, *Travels with My Aunt*, *The Illusion*, *Hedda Gabler* (World Premiere Translation), *Way Downriver*; *William Faulkner's 'Old Man'* (West Coast Premiere), *Sherlock Holmes and the Adventure of the Great Nome Gold Rush* (World Premiere), *Side By Side By Sondheim*, *Chapter Two*, *Freud's Last Session* (San Diego Premiere), *Faded Glory* (World Premiere), *Mandate Memories* (World Premiere), *Becoming Cuba* (World Premiere), *Time Stands Still*, *Words by: Ira Gershwin and the Great American Songbook* (World Premiere), *Two by Pinter: The Lover and The Dumb Waiter*, *HENRY IV Part 1*, *Heroes*, *My Name is Asher Lev*, *The Drawer Boy*, *Becky's New Car*, *Ghosts*, *The Tempest*, *Talley's Folly*, *Over the Tavern*, *Old Wicked Songs*, *The Dresser*, *Jacques Brel is Alive and Well and Living in Paris*, *Madagascar*, *A Shayna Maidel*, *The Honky-Tonk Angels*, *Rashomon*, *A Moon for the Misbegotten*; *Tuesdays With Morrie*; *Collected Stories*; *Halpern and Johnson*; *Romeo and Juliet*; *Amy's View*; *Einstein Comes Through* (also co-author); *The Chosen*; *A Life in the Theatre*; *Story Theatre* and *Charley's Aunt*. **Coconut Grove Playhouse** – *Sonia Flew* starring Lucie Arnaz; *Halpern and Johnson* starring Hal Linden and Brian Murray. **Papermill Playhouse** – *The Chosen* starring Theodore Bikel and John Lloyd Young. **59E59** – *His Royal Hipness Lord Buckley*. **Park Square & Colony Theatre** – *Words By*. **Portland Stage** – *Halpern and Johnson*. **Renaissance Theatre** – *Long Day's Journey Into Night*. **Actor's Theatre of Phoenix** – *Rabbit Hole*. **Alabama Shakespeare Festival** – *The Glass Menagerie*, *Rocket City* (World Premiere) and *Honky-Tonk Angels*. **Laguna Playhouse** – *Chapatti*, *Alexandros* (World Premiere). **Southwest Shakespeare Company** – *Cyrano de Bergerac*. **AJTC** – *Awake and Sing*. **Meadow Brook Theatre** – *A Christmas Carol*. **Portland Rep** – *Conversations With My Father* and **Gaslamp Quarter Theatre** – *A Shayna Maidel*.

Winner of numerous theatre awards, including the San Diego Theatre Critics Circle Award for "2018 Director of the Year."

Favorite roles as an actor include Andrey Botvinnik in *A Walk in the Woods*, Max Prince in *Laughter on the 23rd Floor*, Matt in *Talley's Folly* at North Coast Rep, title roles in *Hamlet* at Los Angeles Theatre Center and Los Angeles Repertory Company; Tevye in *Fiddler on the Roof* at Moonlight Stage, Richard III at California Shakespeare Festival; Einstein in *Picasso at the Lapin Agile* at Laguna Playhouse; Calisto in *The Illusion* at the Arizona Theatre Company; Jonathan in *Sight Unseen* at North Coast Rep and Portland Repertory Theatre.

Film and television credits include over three dozen roles including "Star Trek IV," "The Practice," "Foul Play," "Christine Cromwell," "Renegade," "Eight is Enough" and "General Hospital." David has also been guest faculty for numerous universities including California State Northridge, Cal Arts, and Shakespeare workshops privately. David lives with his beautiful wife Denise and their amazing sons Jamie and Will.

For sponsorship or to become a donor, please contact:

Denise Young

*Director of Development
858-481-2155 ext 210
denise@northcoastrep.org*

For questions regarding the Theatre School@ North Coast Rep, please contact:

Benjamin Cole

*Director of Theatre School,
Education and Outreach
858-481-2155 ext 216
ben@northcoastrep.org*

To advertise in this program or for other advertising opportunities, please contact:

Nancy Richards

*Director of Marketing,
& Public Relations
858-481-2155 ext 220
nancy@northcoastrep.org*

For group sales information and tickets, please contact:

Michael Podd,

*858-481-2155, ext. 202
groupsales@northcoastrep.org*

For tickets, please call or go online to:

*858-481-1055
www.northcoastrep.org
Toll-free 888-776-NCRT (6278)*

Carm Greco

Volunteer Press Assistant

Janet Caulk

Joy DeLee Marrow

Jacquie Reilly
Volunteers

Donna D'Angelo

Barron Henzel
Graphic Designers

Denise Young

Webmaster

SCENE AT NORTH COAST REP



Barbara Hoffer & Leonard Hirsch



Susan & Jurgen Huck, Bette Johnson

DONOR APPRECIATION PARTY

SAN DIEGO BOTANIC GARDEN

PHOTOS BY SONNY PORTACIO



David & Kathleen Roche Tansey



Eric Cohen & Karen Wilder



Doug Druley & Judith Sedler

GIFTS IN HONOR & MEMORY

Cindy Baker
in honor of Lawrence Baker

Chuck & Veronica Baker
in honor of Marty's Birthday

Stephen Beck-Von-Peccoz
in Loving Memory of
Michele Beck-Von-Peccoz

Alina Bokovikova
in honor of Marty's Birthday

Paul Burnett - Marty Birthday

Strega Cerbone-Colangelo
in memory of her father
who would have turned 70

Diane and Elliott Feuerstein
in honor of Marina and Rafael Pastor

William Eugene Friedel
in honor of Nancy Richards

Ellen Geer
in honor of David Ellenstein and
everything he has done through the years

Jeanne Hesse
in honor of Marty's Birthday

Marsha Janger and Richard Shapiro
in honor of Marc Tayer

Jim Johnston
in honor of Marty's Birthday

Jennifer Jones
in honor of Timothy Jones

Mimi Lee
in honor of Jay and Julie Sarno

Mary and Fred Meyers
in honor of Jay Sarno

Jeannine Marquie
in honor of Marty's Birthday

Deborah McKenney
in honor of Marty's Birthday

Greg Micek
in honor of Marty's Birthday

Dale Ordas
in memory of Ruth H. Ordas

Ann and Charles Peabody
in honor of Jay and Julie Sarno

Jeanmarie Simpson
in memory of J. Todd Adams

Dr. John and Carolyn Strauss
in honor of Jay and Julie Sarno

Wendy Wutzke
in appreciation for Ben Cole

CREATE A LASTING LEGACY WITH YOUR GIFT

North Coast Rep honors individuals who have included us in their estate plan by naming them as a member of our *Legacy Circle*. These special gifts support the mission of our theatre in perpetuity and are acknowledged with special recognition according to the wishes of the donor.

Many individuals find that their legacy gift carries with it valuable tax incentives, lessens the burden of taxes on your family, and can even provide income.

Please consider making a legacy gift to North Coast Rep. Legacy gifts help play a vital role in developing the cultural wealth of our community and guarantee the success of our theatre for generations to come. You may leave a legacy in the following ways:

- *Simple bequest*
- *Beneficiary Designation of Life Insurance, Retirement Account, or Trust*
- *Gift of Property*
- *Pooled Income Fund*
- *Charitable Remainder Trust*

North Coast Repertory Theatre

Spotlight Gala

5:00PM

SUNDAY, JUNE 5, 2022

Fairmont Grand Del Mar

For information
Contact Denise Young
denise@northcoastrep.org
858.481.2155 x210

Tickets start
at \$350



Whether you are into performing arts or visual arts, be the first to know what is happening in San Diego's vibrant arts scene with the KPBS/Arts newsletter.

Visit and sign up
for our newsletter at

kpbs.org/arts

KPBS is a public service of San Diego State University.



ENCORE!

An Annual Giving Society
at North Coast Rep

Encore! members are recognized as dedicated patrons who have given to North Coast Rep year after year. Membership begins with a third consecutive annual gift of over \$1,000 and continues with ongoing annual support.

To all of our Encore! members, thank you for your years of giving, commitment to North Coast Rep and the talented theatre artists we employ. Your annual gift helps to sustain artistic excellence on our stage and contributes to a thriving arts community in San Diego.

ENCORE! MEMBER HOLLY SMITH JONES



"I think I was born loving the theatre and was blessed with artistic parents that provided so many opportunities to see or participate in dance, music, fine arts and theatre. Art in all forms is a gift to the fabric of our community life. David and Bill have created and managed a nationally respected and financially sound theater at North Coast Rep. I continue to donate to assure that the theatre remains so for decades to come."

thank
you
from
NORTH COAST REP

PIZZA NOVA

JIMBO'S
...Naturally!

SUPPORT AND GIFTS TO NORTH COAST REP

Help support World Class Professional Theatre
by donating to North Coast Rep!



LEADING ROLES

North Coast Repertory Theatre thanks the following individuals and organizations for supporting our mission to consistently deliver high quality professional theatre to our audiences in North County. These leadership donors make that commitment possible. Consider joining our family of arts benefactors with a gift of your own at whatever level is appropriate.

All donations listed from February 20, 2021 to March 24, 2022.

* Members of *Encore! Annual Giving Society* | The cross (†) denotes deceased.

Benefactor's Circle \$100,000+

The Step Family Foundation*
Anonymous

Founder's Circle \$50,000+

The Dodson Family Trust*
Helen Starr†
Anonymous

President's Circle \$25,000+

Tom & Berit Durler*
Frank M. & Lee Goldberg
Foundation*
A. Fenner Milton

Producer's Circle \$10,000+

Bobbie Ball*
Eloise & Warren Batts*
Rich & Cathy Buller*
Jamie Carr*
Janet Caulk*
The County of San Diego
Martin & Dr. Cynthia Davis*
Sam De Luca*
The Board Fund
@ Schwab Charitable
Pam & Harold Fuson*
Jessica & Kyle Greenman
Leonard Hirsch*
John & Diane Kane*
Robert J. Kilian*
David Laing*
Las Patronas
The Jeffrey & Sheila Lipinsky
Family Foundation*
Nate McCay & Jacqueline Bridge*
Patricia Moises*
Jennifer Moores
Dori & Jeff Patterson*
Jay & Julie Sarno*
Don and Becky Sciglimpaglia*
Jeanette Stevens*

Marilyn Tedesco*

Molli Wagner*
Jo & Howard Weiner*

Playwright's Circle \$5,000+

Ken Baca*
Carolyn & Michael D. Berlin
Marilyn Bruno*
George & Karen Bullette
Carol & Jeffrey Chang*
Eric Cohen & William Coltellar
Stella Svetlana & Richard Dreyfuss
Judith Sedler & Douglas Druley
Katie & Jim Fish*
Diana Glimm*
Jill G. Hall Fund
@ The San Diego Foundation*
Jerrold Heller
Karyn Kobayashi & Jim Jacobs*
Elizabeth Anne Johnson
Holly Smith Jones*
David K. Jordan*
Beverly & Herb Liberman*
Elizabeth Ludington
Roger & Nancy Moore*
Mary F. & Dan Morilak*
Marina & Rafael Pastor*
David & Mary Ann Petree*
Gerry & Jeannie Ranglas
Adam & Marti Rosenberg*
Nancy & Jim Saw*
Stan Siegel
Jerome & Sharon Stein
Family Foundation*
The Tanghe Family*
Kathleen Roche & David Tansey*
Marc & Wendy Tayer*
Judith & Tom Tullie
Judith & Charles Wheatley*
Carolyn Wheeler
Karen B. Wilder

Director's Circle \$3,000+

Alexia A. & Paul Anas
Barbara Gene Anderson
Brookstein Family Philanthropic
Fund @ Schwab Charitable
Cate Caplin, The Caplin Foundation*
Robert Campbell & Kristen Caverly*
Fang Fang & Steve Chapman*
June & Rick Collins*
Adrienne Feldner*
Tom & Donna Golich*
Peter House & Carol Childs*
Harv & Louise Kauffman*
Betty D. Lange
Susan E. Lerner*
The Jeffrey & Hillary Liber Fund
of the Jewish Community
Foundation*
Jolene Koester & Ron Lustig*
Judith Robbins
Robin Lipman
Manley & Linda Sarnowsky
Dr. Thomas A. Schweller*
Marsha Janger & Richard Shapiro*
Lisa & David Tarson
Elizabeth & Brian Tresp
Fritz & Norah Wolff*
Beryl Young*
Sandra & Peter Zarcades

Designer's Circle \$1,000+

Sharon Alix Sargent
Deirdre & Michael Alpert
Patrick & Julie Andrews
Laura Applegate
The Assaf Family Fund
@ The San Diego Foundation
Dr. Stephen & Carol
Davidson Baird*
Cindy Baker
Kent & Barbara Freundt
John Barbour

Eva & Steven Barnes
Andrew Barnicle &
Sara Morrison Barnicle
Larry & Judy Belinsky
Ryan Belmer
Stephen Berkley
Steve & Cindy Blumkin
Jules Borack*
Catherine Boyer
Dr. Dick & Ginny Bridg
Ms. Loyce R. Bruce*
Andy & Sally Buffington
Holly & John Carney
Thomas Carr*
Denia & John Chase*
Elaine Chortek
Gigi Cramer*
Sheldon J. Diller
Bonnie Ann Dowd
Virginia & Mark Dowling*
Harriet Kounaves &
Christopher Duke
Denise Young & David Ellenstein
Diane & Elliot Feuerstein
Franci & Scott Free*
Beverly Fremont
Fran Friesen
Staubus-Dodge Family Fund
@ Rancho Santa Fe Foundation
Cheryl & Ira Gaines
Russell H. Ginns
Cathy Golden
The Carole & Howard Goldfeder
Fund @ Vanguard Charitable
Charles Cuccaro & Ana Maria Grace
Carrie & Jim Greenstein*
Jamie Henson &
Robert V. Houskeeper*
Marion & Bill Hinchy
Mark & Candise Holmlund
Maryka & George Hoover
Reena & Samuel Horowitz
Rod Innes & Marysa Andriola
Seth Krosner & Phil Johnson
Barbara & Dick Justice
Katherine & Tom Foster
Sarah & Steve King*
Shirley King
Sheldon Kleiman
Mervyn Kodesh*
Ms. Randa Krakow
Joseph & Donna Labonte
Janet & Clifford Lange
Sharon & Richard Leib*
Sue Ellen & Pierre Leroy

Bernice Levie
Robin Lipman
Yoko Sakaguchi & Peter Manes*
David Marchesani
Richard French & Gary Margolin
Stan Marks
James & Lydia Martin
Kari & Ken Martone
Laurel McCrink
Barbara Jeanne Menard
Judy & Allen Moffson*
George & Janice Muller
James M. & Josephine Myers
Ingrid Nielsen
Jeannie & Bruce Nordstrom
Jerry & Phyllis Olefsky
Binky Onishi-Mogg
Jack Singer & Sue Ann
Owens-Singer
Jaclyn & Steven Palmer
Harold Payne
Ann & Charles Peabody
Charles & Marilyn Perrin
Shirley & Harold Pidgeon*
Mahesh K. Podar
Judy Pressman
Erica Bee & Yanir Ram
Margalit & Yossi Ram
Joe & Keren Ramsdell
Bingo Roncelli
Mason & Lynne Rosenthal*
Art & Ruby-Ann Rudnick
Hon. H. Lee & Marjorie Sarokin*
Sally Sutton Schulze
Cynthia Seeberg
Astrid Shannon
Donald Shepherd
Michael D. Singer & Sabina Wyss
The Donald and Gayle Slate Family
Fund of the Jewish Community
Foundation*
David & Heidi Straus
Carolyn & John Strauss*
Dianne R. Sullivan*
Lorraine Stamoulis Surnamer
James Tutorius*
Stephanie & Alan Tarkington*
Donna & Raymond Vance
Jennifer Ball & Michael Varney
Carol Vassiliadis
Mary Lou & Terry von Klein
Pat & Chris Weil
Lynne & Steve Wheeler
Judy White*

Susan Winbigler*
Britt Zeller

Actor's Circle \$500+

Anonymous
Dr. Irene Abraham
Mickalee Altman
Mia & Joshua Anderson
Lyn Anderson
Scott Andreiko
Alicia M. Annas
Anonymous
Loren Archer
Roberta Baade
Louise Barr
Alan & Nan Barth
Karen Begin
Ed & Arlene Bender
Barbara & Bill Berrier
Anonymous
Margaret C. Bobertz
Andrea Bogardus
Sheila Wosk & Gerald Bordin
Barbara & Len Brazinsky
Miriam & Jack Breyer
Laverne & Blaine Briggs
Barbara & Thomas Brotherton
Cristina Burlem
C. L. Busby
Janice & Nelson Byrne
Janice Callahan
Willi & Bill Caylor
Abbey Chamberlain
Nancy & Allan Chapman
Maryellen Clark
David E. Closson
Vicky Carlson & Steven Cologne
Joanne & Ken Conrad
Patricia & Wallace Cook
Mr. & Mrs. Marc Corwin
Linda & Dennis Costello
Hilary Crain
Candace Curlee
Frederick Cutler
Dana & Rob Dahlbo
Pam & Mike Dalton
Debra L. & James D. Tomcik
Caroline S. DeMar
Sidney Djanogly
Kathy & Bill Dougherty
Ruby Hinds Edman
Jacquelyn & Edward Eginton
Richard Fogg
Sue & Ben Frishberg
Deanne Gage

SUPPORT AND GIFTS TO NORTH COAST REP

Charlie Garrison
Christine & Peter Gault
Maxine & Arthur Geller
Gary Gentzkow
Judith & Joel Gerber
Athina Markou
Marty & Jim Gigler
Thomas Goergen
Morris & Phyllis Gold Fund of the
Jewish Community Foundation
Michelle Gorcey & Kenny Biblowitz
Charles A. Gough
Jodie & Matthew Graber
Cristin Hagaman
Susan & David Hagstrom
Janice Hall
Christy Hendrickson
Portia Metras & James Hooker
Donna & Richard Horne
Allen Huffstutter
Judy & Tony Hugli
Linda & Bronson Jacoway
John Jensen
Cynthia Jones
Gina Kakos
Sue & Ara Kaloustian
Trina Kaplan
Kathi & Gregory Karen
Beverly & Richard Kerns
Judy & Duffy Keys
Kim Kleber
Marvin M. Kripps
Catherine & Maren
Kroger-Diamond
Monique Kunewalder
Sherrie & Michael Laver
Eliza Lee
Mimi Lee
Anni & Arthur Lipper
Suellen & Eric Lodge
Laurence & Lucie Arnaz Luckinbill
Anonymous
Steve MacBaisey
Johnny Mah
Beverly Marcum
Mary Ann Marcuzzi
Tom Markus
Meisarosh Mazurkiewicz Family
Karen McCracken
Mary & Fred Meyers
Diane Milberg
Diana Miles
Susan & Charles Muha
Sherrie & Glenn Napierskie
Lawrence Newmark
Toni & Thomas Nickell
Teresa Ann Norton

Pamela Nuccio
Michelle Oroschakoff
Marc Poland
Jane & Peter Polgar
The Matthew & Judith Pollack
Charitable Fund of the Jewish
Community Foundation
Donna & Al Przecha
Patricia & John Queen
Constance E. Gonczy &
Steven D. Reich
Vivian Reznik & Andrew Ries
Elaine Robinson
Cheryl Rodzach
Anonymous
Christine Rounsavell
James Royle, Jr.
Oliver A. Ryder
Marcia Schofield
Paul Scott
Gerry & Charles Scribner
Pat & John Seiber
Teresa Shaffer
Scott & Mrs. Cathy Shaw
Margaret C. Shea
Miriam & Lawrence Sherman
Bruce Shirer
Stephanie R. Sides
Rob Sidner
Beverly Silldorf
Marc Silver
Carol V. Smith
Jo-Ann Smith
Elizabeth & Michael Smith
Anne Speraw
Sylvia Steding & Roger Thieme
Dana Stein
Laurie & Greg Stelzer
Jan & David Stormoen
Maureen Talbot
Marybeth & William Thayer
Susan & Richard Ulevitch
Janis Vanderford
Karen Vanderwerken
Victor van Lint
Andrea Van Vranken
Marianne Velasco
Susan & Merle Vogel
Ward Family Charitable Fund
Lee Edith Weiss
Ms. Kelly Welch
Judith White
Jan Wier
Stephanie Wilde
Mrs. Lenore Wilkas
William & Sally Willis
Caryl Lees Witte

Derek & Diana Wood
Dorothy B. Wood
Lynn Yahr
Cindy Lee Yco
Brenda & Dave Zito

Star \$250+
Lisbeth Abramson
Diana L. Adam
Barbara Adams
Susan Adams
Jon & Sunny Allen-Romberg
John Andersen
Shirley Ann Anderson
Colleen & Augusto Angelucci
Richard Annesser
Weston & Susan Anson
Gisela Astl
Regina Aulisio
Wendy Avraham
Ken Baker
Ron Ball & Connie Smith Ball
Talisman Barbosa
Mrs. Christine A. Barnes
Mrs. Sharon Barnett
Ms. Elizabeth Barnhart
The Baum Family
Larry Bean
Trudi Beebe
Frank Belock
Virginia Beneke
Alan & Toni Benner
Mrs. Jane Benton
Bruce & Mary Berend
Linda Bergen
Al Berkowitz
Kenneth & Marie Bertossi
Joyce Billings
Leslie Bivens
Dr. Ruth Claire Black
Kenneth Bliss
Chuck & Shirley Block
Stephen & Wendy Blumberg
Todd Bohlman
Krista Bonaguidi
Catherine Marie Borgia
Maryann Bornmann Yugas
Dan & Judith Boyle
Roberta Brant
Dr. Gary & Leslie Braslawsky
Mr. & Mrs. George Brody
Larry D. Brooks
Lucille Brown
Robert & Zane Bruck
James Buchanan
Todd & Debby Buchholz
Eleanor Burton

Nancy & James Byrne
Frank and Nanette Caldararo
Raedel Calori
Gary Cantor
Anonymous
Jerome Carp
Carmella Carr
Kathleen Carroll
Dr. Kathy Jane Chamberg
Anita Charney
Joy & Jack Charney
Sherwin Chasen
Mrs. Kathy Chen
Connie M. Coe
Robert Cohen
Michelle Conde
June Conner
Dr. & Mrs. Neil & Teresa
Ross Cooper
Chris & Linda Khoury
Joan Costello
Sarah & Kirk Cowles
Jim & Laurene Crosby
Donna Cross
Fay Dadbeh
Ms. Kathleen O. Dailey
Kate & Tom Dalton
Andrea Dee
Elizabeth Savage Delpozo
Joan Deyoung
Vic & Mary Dhooge
Dr. Ellis & Bonnie Diamond
Mrs. Patricia Dintrone
Rona Djeddah
Esther Lynn Dobrin
Mr. Jeffrey Doerner
Valerie Dolan & Leon Covell III
Barbara Doren
Richard & Carol Doughty
Mr. Terry E. Douglass
Dick & Nancy Douville
Rose Marie Doyle
Edith & Ed Drcar
Ms. Silvia Dreyfuss
Dr. Squatch
Ms. Mary Young Duarte
Eloise Duff
Douglas Dunn
Thomas Dunn
Myrna & Bill Eastwood
Elaine Eisenberg
Devora Safran & Ron Eisenberg
of Great News!
Neil Balmert
Ellen Thomas Memorial Fund
at Coastal Community
Foundation
Aileen Emer

Vera & Tom Emrick
Verona Endrizzi
Odette Engelberg
Martha Elin Erickson
Candice and Bob Fagan
Ron Fauset
Patricia Fellows
Susan Fellows
John J. Fleck
Cynthia Fleri
Arnold & Cecile Forman
Laurie Beth Forrest
Karen Freeman
Mr. James C Friel
Dr. D. & Sunny Frowein
Marjorie Frye
Kathy Furgerson
Karen & Kenneth Gallagher
Ms. Cheryl E. Gann
Joseph Garrie
Bill & Ann Gaw
Mrs. Lynn M. Gaylord
Brenda Gebler
Mr. Henry J. George
Patti Gethin
Virginia Ghoniem
Cynthia Giammarinaro
Ben & Ann Giangiolio
Elaine A Gifford
Mrs. Carla Gilbert
Lee Gillard
Elizabeth Gilpin
Emilio Giraldez
Karen Glavin
Bargiora & Pnina Goldberg
Dale and Don Goldman
Mr. & Mrs. Sherrill Goldman
Mr. & Mrs. Bob Goldstein
Mrs. Joan Goott
Diane Gotkin & Richard Feinberg
Dr. & Mrs. Steve Gould
Amy Graham
Elizabeth Greenlee
Craig E. Griffin
Sharon Griggs
Robert & Ester Gross
Jay Grossman
Liz Gunzelman
Semra Gurol
Alfred & Betty Haboush
Paul & Nancy Hackert
D.L. Hadden
Herb & Ellen Hafter
Robert Halleck & Della Janis
Michael Haller
Julie Halliday
Marc Halpern & Heidi Dewar

June Hope Harland
Richard & Sharon Hatch
Jeffrey Hatcher & Kathy Endris
Paul Heim
Janice Heinzmann
Jody Hennessy
Margaret Herbert
Fred & Joyce Hershenson
John Herzog
Thomas Herzog
Heidi & David Hodges
Ms. Jeannine T. Holt
Jack & Natalie Holtzman
Verena Hommel
Patty Howell
Brenda Hubbs
Mrs. Marilyn P Hulquist
Lee Human
Mrs. Edith R. Hunio
Dr. & Mrs. Bob Oscar Husa
Hilary Jacobson
Jocelyn Shannon & Jane Weiss
Julie Johns
Duane Johnson
Robert Jones
Mr. William A. Julian
Bernard Kalscheuer & Ellen Covairt
Mr. & Mrs. Ronald Kardynski
Douglas P. Kempf
Kaaren Kerlin
Jon Kern
Arthur P.C. King
Ms. Marian S. Klein
Kathleen J Kleinfeld
Christopher Kohrs
Terance Kopanski
Carol & Harvey Korfin
Sharon R. Korn
Keith & Connie Kortman
Donald & Marilyn Kowal
John Krebs
Kathryn Kubasak
Bernard Kuchta
Anne Kulidjian
Regina P Kurtz
Dianne Kutz
Sophie LaCasse
Dennis & Barbara Lambell
Mrs. Patricia C Lamont
Barbara Lange
Peter & Judy Langhoff
Anita & Peter Lanner
Dr. Alan L. Lasnover
Dr. Joan Forrest & Dr. Michael Latz
Mrs. Barbara Ute Launspach
James & Risa Rauth
Carolyn Lawson

SUPPORT AND GIFTS TO NORTH COAST REP

Verjean Lawson
Debra Levin
Beth Levine & Henry Abarbanel
Mr. Philip Levinson
Ms. Rita K. Levy
Betty Lewis
Carol Marie Lingenfelter
Hamilton M. Loeb, Jr.
Hanneke & Dick Logger
April Lopez
Nina & Michael Lorber
Jo & Sy Lotsoff
Denruth Lougeay
Louis C. & Celia K.
Grossberg Foundation
Daniel Lysne
Marcia Malkus
Ms. Margaret Mandac
Ms. Maureen Markey
Mark & Susan Edelstein
Mr. Jerry & Marlene G. Markus
Peggy Ann Martin
Ms. Beth Mascherin
Ms. Gloria D. MC Coll Powell
Elgie & Mary McGrath
Thomas McGreal
Russ McLee
Robert & Jan McMillan
Ira Meislik
Harold Mensch
Scott & Beth Mercer
Lynne Merchant &
Dr. Richard Carpenter
Marlan Merhab
Kenneth and Shalah Michael
Mike & Marge Michaelson
Stanford & Marlyn Milberger
Hans & Merrole Millenaar
C.J. Miller
Linda M. Miller
Van Miller
Nancy & Isaac Mizrahi
Rena C. Monge
Dr. Richard & Frances Moore
Morgan Stanley
Jan Mori
Charles Morris
Janice A & Tim Morris
Margaret Munoz
Amy Murad
Nancy Anderson
Kelly Neagu
Ms. Suzanne Neeb
James & Kathalyn Nelson
Robert & Michele Nelson
Tom & Jamie Neppel
Deidre & Skip Newton

Tom & Pat Nickols
Mr. Harold Noll
Ms. Karin Norberg
Margaret & Stephen Norton
Mr. & Mrs. Abigail & John Odam
Mrs. Marilyn O'Hair
Al & Barbara Ollivares
Mr. Dale Ordas
Elizabeth Ortlieb
Linda Oster
Benita Page
Donna Page
Mr. Robert D. Paluzzi
Frank & Marti Panarisi
Steve & Carole Papadopoulos
Billy & Debby Parks
Isolde Parrey
Ed & Carolyn Parrish
Dr. A. Sandy Parsons
Cathy Paulsen
Clarice Perkins
Ann & James Peter
Gerda M Petersen
BJ Peterson
Greg & Kerstin Pfann
Ila Piel
Ms. Kim Plunkett
Joyce Poe
Tom & Janice Powers
Arvind Prabhakar
Mrs. Ecco W Price
Glen Pritzker
Heather M. Oonk
Chuck Pryatel
Nicholas Rampino
Susie Rantzow
Gerry Raynes
Barbara Jane Redlitz
Elmer & Lorraine Reich
Keith & Elsa Rickard
Julianne Ricksecker
Laura & Patrick Riley
Betty Ritter
Stuart & Linda Robinson
Eduardo & Teri Rodriguez
Alice Rohdy
Jonathan Roper
Sharon & Steven Rose
Dr. Norman Charles Rosen
Sonia & Lee Rosenberg
Roy & Joan Rosenwald
Irwin Rubenstein
Rob Rubin
Arnold & Janet Ruskin
Michael Russell
Howard & Leslie Sachs
Mary Salvato

Theresa Sample
Thomas Joseph Scardina
Laura Schaefer
Gretchen Schafer
Sandra Schafer
Mrs. Jane & Stan Schatt
Stephen Schechner
Mrs. Laina Schechtman
Richard & Adrienne Schere
Charles Schmitt
Donald L. & Emily B. Schneider
Mr. & Mrs. Thomas Schneider
Ileese & Gary Schneir
Steve & Miki Schorr
David Schuss
Edward Schutz
Rochelle Schwartz
Ted Schwend
Nadine Scott
Stephen & Jill Seagren
Zachary Seech
George Wayne Seidel
Esther P. Sery
John Shaffer
Enid & Mark Sherman
Mr. John L. Sherman
Pam Shetler
Mrs. Elissa Shuchter
Laurel Shupp
Steve Siemers
Dr. Dee Silver
Mark Silver
Anita Simons
Howard Singer
Ms. Cathie A. Skinner
Claire Slattery
Jack Smith
Marshall Smith
Mary Jean Smith
Keith & Elsa Rickard
Nancy Snyder
Lawrence & Evelyn Solomon
Carol Sorenson
Randall Souviney
Ann Spector
Dr. Lisa Spiegel
Jim & Joyce Spievak
Danny Spungen
Ms. Melanie A Starr
Mr. & Mrs. Cindy Steiner
James & Deanna Stephens
Mrs. Marguerite L. Stewart
Jill Stone Fund of the JCF
Gwen Stoughton
Stovin Fund of the Jewish
Community Foundation
Susie Styn

John & Catherine Swan
Ms. Lisa T. Sweet
Doug & Mary Swenson
Ross & Katherine Tanner
Dr. Robert & Camilla Tausworthe
Willard Tayler
Eileen Tebbetts
Rochelle Terry
Margaret Tessier
Mr. & Mrs. Charles William Thomas
Mrs. Deborah L Thomas
John and Patricia Thomas
Linda & K.C Thompson
Richard Ticho
Joyce Timperley
Dr. Christian Tomaszewski &
Susan Bodtke
Eva Trieger
Mort Tuchin & Marlene Zagon
Richard & Denise Tverdoch
Scott & Kaylin Union
Hitomi Usher
Sandra Vail
Jilaine & Louis J Valerio
Holly Vanderpool
Dayle Van Lom
Meera & Mandyam C. Venkatesh
Sharon Verlodt
Helen Vexler
Dr. Vinton C. Vint
Linda Volz
Mary Vonderreith
Celia Wakefield
Alice Walker
Bobbi Warren
Laurel Wasserman
Phyllis Weed
Mrs. Evelyn M Weidner
Margaret & Charles Weigand
Cathy & John Weil Fund of The
Jewish Community Foundation
Jeff & Esther Weisel
Nancy Cetel & Joseph Weiss
Evie Cohen
Annemarie Whalen
Diane White
Mrs. Louise White
Mrs. Mary A Whittier
Chris Wildes
Roland & Loreen Wilhelmy
Robert Wilkinson
Sally Williams
Donald E. Willis
John & Dorothea Wilson
Wilson-Weinberger Family Fund
Arden Winokur
David Ira Wolf

Marcia & Donald Wolochow
Tom Woodbury
Betty & Milton Woolf
Mark Xitco
Nancy Yates
Janet A. Yaws
Art & Sandra Yayanos
John Yeager
Candace Young-Schult
Cheryl and Richard Zales
Daphna & Gad Zeilingold
Charlie Zieky
Mrs. Marina Zielinski
Hermann & Trude Zillgens
Helene & Allan Ziman Fund of the
Jewish Community Foundation
Joe & Linda Zuieback
Ellen & Jack Zyroff

Cameo \$100+

Marjorie L. Abrams
Eileen M. Ackerman
Sharon Rae Ackroyd
Herb Adelman
Judith Adler
Nancy & Dr. Stephen Albert
Lyn Allison
Rhonda Amber
Jon & Dee Ammon
Allan & Brenda Anderson
Karen Anderson & Roman Zajcew
William & Joanne Anderson
Edith Andrew-Akita
Anonymous
Arleene Antin & Leonard Ozerkis
Lisa Appelgate
Mary & Philip Arana
Susan Arigoni
Wally Augustin
Stephen Awe
Joyce Axelrod
Mr. Edward Baca
Glenda H. Baker
Edward D. Ball
Miss Barbara Lucille Barnett
Veronica Barraza
Radka Bartholomew
Mr. Thomas Basacchi
Lewis Baurer
Debra Baxter
Karolina Bayer
Phylaine Bemel
Terry Berland
David A Bialis
Ms. Elizabeth A. Bieger
Laura Bier
Nicholas & Samantha Binkley
Marilyn Birkes
Cynthia & Arthur Birnbaum
Irene Biro
Paul Bishop
Mr. Gerry Black
Blackbaud
Amy Blount
Jan Bluemer
Robert Blumberg
Susan & Jim Boland
Paola Bonacina-Benzoni
Joseph Bonanno
Catherine Bowen
Linda Boyd
Judith Ann Bradley
James & Marie Bradley
Ronald J. Brahms
Stuart T Breisch
Michele Brenner
Pamela Brittain
Paul Brocchini & Priscilla Franklin
Richard Brockmeyer
Kathy & Bob Brombacher
Dori Brown
Thomas A. Brown
Liz Mullarkey & Rob Bryson
Ms. Betsy A Buckner
Steve & Kai Bunyak
Dolores Burns
Barbara Bussey
Betty Byrd
Paulette Cabral
Julie Ann & Richard Callis
Joyce Calvin
Jack A. & Frances Caminer
Roberto Candel
The Estate of Jean Cantwell
Anthony Rebout Carr
Carol Dickinson Carr
Brian Carter
Carol Case
Lilian Cereghini
Lois & Robert Chaddock
Mark G Chapon
Ted L. Childers
Annu Chopra
Nancy Chubbuck
Dr. Thomas D. Chung
Susan Claassen
Barbara H. Cohen
Hannah S. Cohen
Ms. Phyllis Cohn
Anonymous
Patrick Cole
Michael Coleman
Ms. Linda F Collier
Holly & Ross Colt
Joe & Ramona Colwell

SUPPORT AND GIFTS TO NORTH COAST REP

Allan & Kelly Connell
 Garey Cooper & Maxine Toby Cooper
 Mr. Coop Coopridner
 Jan Corash & Michael Berdan
 Albert Corti
 Mary Cossette
 Sydney & Larry Cousins
 Weyman H. Cox
 Ms. Brooke Crocker
 Diane Culp
 Nancy Cunningham
 Cheryl Dale
 Clarence T. Daub Jr
 Alice Davis
 Ms. Florence D. Davis
 Lesley Davis
 Keely Daximillion
 Jeanette Day Charitable Fund
 @ Schwab Charitable
 Luccette Dean
 Deborah Vietor
 Julie Decker
 Michelle DeFrancesco
 Janice Degraw
 Del Mar Rotary
 Nancy Denton
 Mrs. Marguerite Jackson Dill
 Dr. & Mr. Peter Bryan Dinerman
 Laura & Rich Dipietro
 Kimberley Dorey
 Cynthia Dorne
 Ellen & Wayne Dosick
 James Dredge
 Jeanine Dreifuss
 Dr. Ken & Lisette Druck
 Marilyn Dunn
 Victoria Dural
 Heather Duze
 Bill Eadie
 Louise B. Edwards
 T Todd Elvins
 Helen Emmerson
 Lynda Engle
 Susan Eubanks
 Eunice Dossantos
 Gail Eyler
 Elisa Ezor
 Claudia Fainman
 Mr. Joseph Faletti
 Rosann Feldman
 Rick Fellen
 Al & Danette Fenstermacher
 Gil Field
 Barbara Fishbein
 Anne Fitzgerald
 Pat D. Fitzmorris

Anne Fletcher
 Judith Fogel
 Mr. & Mrs. Michael Folb
 L. Michael & Pamela Foley
 Anonymous
 Rhoda Forrest
 Ken & Jane Foster
 Mr. Steve Elliot Foster
 Maggie Fowlie
 Marion F. Fox
 Barry & Mary Francke
 Jane & Mike Frank
 Terre Frank
 Carole Franks
 Margie Frazee
 Ms. Nancee J. Friedlander
 Isabelle Friedlieb
 Phyllis Friedman
 Sharon From
 Mr. Gary Frye
 Ms. Norma Galindo
 Mr. Loren D. Gardner
 Margaret Joan Gavillet
 Ellen Geer
 Beverly Gilfillan
 Patricia & Norman Gillespie
 Martha Gish
 Joanna McClelland Glass
 Joe Godfrey
 Louis Goldich
 Gayle & Dwight Gordon
 June Gottleib
 Anonymous
 Marlene Gotz
 Bob Gramen
 Jo Grantland
 Diana Greg
 Ms. Elaine Gregg
 Barb Grice
 Marilyn Grieco
 Barbara Griffin
 Gregory Gross
 Michael Guberek
 Michael Guinan
 Ms. Jo Guinn
 James Hackett
 Kathy Hagenbach
 Diana Hagerty
 Diana Hahn
 Mr. Peter A Halle
 Debra Halliday
 Paula Halprin
 Cynthia & Arne Hansen
 Jim & Pat Hansen
 Judith Harper
 Andrea Harris
 Bebe Harris

Diane N. & John A. Harris
 Drs. Jim & Katie Harte
 Bill & Elaine Hartleb
 Dr. Anne Charlotte Hanes Harvey
 Elizabeth Harvey
 Rhoda & Deane Haskins
 Caroline Hathaway
 Jim Healy
 Robert S. Heighton
 Cynthia Heigold
 Catherine J Hestilow
 Dennis & Barbara Higginbottom
 Deborah L. Hirsch
 Howard Hirsch
 Michael Hopkins
 Dr. Judi Hora
 Pamela & William Howe
 Monika Hseu
 Joan Husen
 Lisa Illianna-Jessup
 Intuit
 Diane Ivy
 Ella Jarf
 Dr. Mary Jennings
 Vivien Joebchen
 Dr. Jeannette S. Johnson
 Dr. Klaasje R. Johnson
 Dave Jones
 Doug Jones
 Thomas J Jroski Jr
 Joe Juliano
 Susan Kabakoff
 Carol Kane
 Ginger Kantor
 Michael Kaplan
 Linda Kass
 Mr. & Mrs. Jeffrey A Katz
 Kenneth D. Kebab
 Mr. & Mrs. Carrie & Jay Kelley
 Katrena Keys
 Morgan King
 Miriam L. Kirschner
 Cindy Klong
 Lowell & Pam Klosky
 Leeann Knetzer
 James & Doris Knotter
 Karen Knudson
 Jeri Koltun
 Patricia Koob
 Phyllis Kopp
 Revella S Korman
 Theodora Kostka
 Julian Krinsky
 Elizabeth Kruidenier
 Niki Dee Krutop
 Jean Kuisel
 Ms. Myra J. Kurz

Pam Kurz
 Frances & Jack Kyte
 Joanne La Gow
 Mr. & Mrs. Jeff Landes
 Sharon Lane
 Iris Lapidus
 James A. Larrimore
 Ms. Susan Leibovitz Larson
 Diane Laub
 Shirley Layton
 Veronica Lee
 Bonnie Lennon
 Dan & Judith Leshner
 Julia Let
 Arturo Levin
 Sandra Levin
 Geraldine Levine
 Mrs. Renee Levine
 Ronald S. & Jill Levitt
 Evelyn Lipson Radom &
 Dr. Sanford Radom
 Paula Liska
 Sandra Louise Long
 Sergio & Hilda Loza
 Christine Lucas
 Jacqueline Lucas
 Jolie Lucas
 Gary & Diana Macek
 Scott MacGregor
 Martha MacKenzie
 Linda Maczko
 Abraham F. Mara
 Dr. Eric & Rene Marcus
 Robert Grand & Marilyn Riley
 Wilma Marr
 Noriko Marshik
 Dick & Barbara Martin
 Karl & Brenda Martin
 Leslie Martin
 Nancy Martin
 Mrs. Elizabeth Maruchau
 Anonymous
 Linda Mason
 James Mastrogany
 Mrs. Carol Mathews
 Mrs. Patricia Jean Matthews
 Marjory Mattly
 Doris Mattox
 Valentina May
 Marguerite McBride
 Patricia Mary McCabe
 Gloria McCaffrey
 Debra A. McCain
 Tort McCarter
 Denver McCune
 Susan McEachern
 Mary Anne McKiechan

Mrs. Terri McMurtry
 Mrs. Joanne McNamara
 Cdr. "Casey Katherine Meehan
 Penny Metropulos
 Roslyn Meyer
 Shabnam Miglani
 Elizabeth R. Weinberg &
 Dr. Mikel D. Weinberg
 Jean Milam
 Ms. Karen Staephanie Miller
 Mr. Craig Mitchell
 Ted & Vera Mitchell
 Arnold Mittelman
 Victoria Mohutsky
 Victoria Monaco
 Dr. Carolyn Monahan
 Karen Montag
 Mrs. & Mrs. Louis D Moret
 Caroline Morse
 Bill Pultz & Maureen Moss
 Rudolf Muller
 Jessica Munoz
 Helen P. Neal
 Mrs. Lee A Nelson-Reimer
 Network for Good
 Carol Netzel
 Lynne Newman
 Marianne Nicholson
 Sheryl Nissen
 Doris Nissinoff
 Reba Oberman
 Kathy Oldham
 Michael Oldstone
 Virginia S Oliver
 Timothy O'Neill
 Larry Osterink
 Mrs. Cindy outlaw
 Julie Overton
 Mr. Randolph Pabst
 Dr. Wayne Padover
 Ms. Julia E. Parry
 Dottie Pechek
 Linda Pequegnat
 Susan Jane Peters
 Yelena Petrova
 Joann Phillips
 Kim Pierce
 Mrs. Barbara Ann Poole
 Margaret Pope
 Jay Powers
 Kaye Preston
 William & Diana Price
 Robert & Merle Propp
 Merlin & Margaret Puck
 Barbara & Christopher Puntis
 William Purves
 Dr. Neil R Quinn

Ron & Sue Quinn
 Barbara Rita Rabiner
 Dolores Rapoport
 Dr. Paul Rappaport
 Janet Raschke
 Linda Rattray
 Julie Teel Regan
 Dr. Regina Reinhardt
 Mark N Remy
 Joanne Reno
 Ms. Sondra Renwanz
 Ms. Sharron L. Resnick
 Dr. Robert & Lauren Resnik
 Nancy & James Riley
 Connie & David Rittichier
 Cal Robinson
 Pamela Rockwell
 Darlene Crystal Rogers
 Marian L Rogers
 Diane Roland
 Kathleen Rooney
 Dulcie & Norman Rosenfeld
 Ms. Nicole Cott Ross
 Alice Ross Gordon
 Sally Rothfus
 Mr. David Rothschild
 Mary Rountree
 Mrs. Aaron Rumley
 Nina Sabban
 Diane Sadowski
 Stella Saling
 Carol Salvati
 San Diego Padres
 Jenni & Kim Prisk
 Mr. Ray Sarno
 Joan Saunders
 Bruce Schafer
 Al & Ann Schlegel
 Dr. Alan Schneider
 Charles F. Scholl, Jr.
 Harriet Schuman
 Dominick Scigliano
 Marilyn Seals Monell
 Joan Sealy
 Shari Severson
 Salim & Francoise Shah
 Mrs. Carol Shakter
 Elena Shekhter
 Mr. & Mrs. Richard Sherwood
 Lynette Shires
 Robert Shulkin
 Dr. Ed Siegel
 Glenn Silverman
 Monty Silverstone
 Amy Sims
 Jane Sinclair
 Ms. Ann M. Skinner

SUPPORT AND GIFTS TO NORTH COAST REP

Charles & Beatrice Sklarewitz
Karil Skrukud-Adams
Mr. Steve Slater
Ms. Adelaide I. Sloboda
Dr. Robert & Jacquelyn Slotkin
Catherine P. Smart
Barbara J. Smith
Cathy Smith
Joseph Smith
Nancy Snow
Carla Solomon
Keith Spears & Leslie Martin
Ellen Spencer
Jo Anne Springer
Mrs. Patricia S. Stein
Mark Stenson
Marilyn Stenvall
Stern Trust Giving Fund
Ruth Strauss
Carol Streeter
Mark Strickland
Maryanne Stroud
John Sullivan
William & Barbara Summer
Judith Swan
Felice Swanson
Brienne Sweeney
Sandra Lee Sweet
Ms. Joniene Swick
Trudy Synodis
Kathie Szustecky

Rina Szwarc
Mrs. Arlene Tashlick
Nancy J. Taylor
Allison & Jon Tedesco
Phoebe S. Telser
Barbara Thomas
Kristin Thomas
Anne Thompson-Welch
John & Susan Thompson
Ruth Tiffany
Jennifer Tillman
Norma Totoritis
Helga Trachinger
Linda Turman
Joe & Terrell Tyra
Virginia L. Unanue
Jana Uslan
Uss Midway Museum
Nicholas C. Valdez
Virginia van Meter
Rob & Carolyn Veuger
Sabina & Jim Vincze
Pat Vollman
Miss Dolores J. Wall
Wendy Wang
Ms. Ruth Warburg
Dr. Ken D Ware
Ken & Linda Wasserman
Kenneth & Elaine Watson
Duane & Sue Weekly
Sandra Weinstein

Judy Weiss
Michael Wellman
Lesa M Wells
Michelle White
Kathleen Whitworth
Joy Wiker
Isabella Wilf
Beverly S. Willey
Barbara Williams
Ellen Williamson
Barbara Wilmot
Abe Wilson
Jacqueline Wiseman
Mark Wisniewski
Dennie & Jeannine M. Wittmayer
Nathan Wolfstein
Dawn Marion Yocom
Maxine Young
John Zack
Pam Zimbalist
Anonymous
Katrina Zynda

NORTH COAST REP PRESIDENT'S ADVISORY COUNCIL

Lucie Arnaz
Kenneth Baca
Richard Dreyfuss

Kathleen Bell Flynn
Steve Flynn
Leonard Hirsch
Dr. Allen Moffson

Dave Roberts
Jay Sarno
Julie Sarno

FOUNDERS

Tom and Olive Blakistone

CORPORATE, FOUNDATION AND GOVERNMENT SUPPORT

Please join us in thanking the following businesses and government agencies for their support.
All donations listed from February 20, 2021 to March 24, 2022.

Founder's Circle \$50,000+

Anonymous
The Dodson Family Trust
US Small Business Association
The San Diego Foundation

President's Circle \$25,000+

The Conrad Prebys Foundation
The County of San Diego
at the recommendation
of Terra Lawson-Remer
The Dempster-Larsen Fund
of the Parker Foundation
KPBS
Mandell Weiss Charitable Trust
State of California Relief Program

Producer's Circle \$10,000+

American Assets Trust
The Sheri and Les Biller Family Foundation
California Arts Council
The County of San Diego
Las Patronas
Nordson Corporation Foundation
Pacific Solana Beach Holdings, Lp
The Shubert Foundation
Truly360
US BANK

Playwright's Circle \$5,000+

City of Carlsbad
City of Solana Beach
The Jewish Community Foundation
JFK Fund @ Fidelity Charitable
Leichtag Foundation
Pacific ENT Medical Group
QUALCOMM, Inc.

Designer's Circle \$1,000+

The Coastal Community Foundation
Craftsman Revival
Garrison Insurance
Gay & Lesbian Fund for San Diego
@ the San Diego Foundation
Gonda Arts and Entertainment Foundation
IBM Corporation, Matching Grants Program
ITEX Inland Valley
NEBCAL Printing
Morgan Stanley

Actor's Circle \$500+

California Bank & Trust
The Girard Foundation
at the recommendation of Deidre Alpert
Hewlett-Packard
The Mailing Group, Inc.
Office 1

Thank You

If you are interested in seeing how you can play a greater leading role at North Coast Repertory Theatre, please contact Denise Young at denise@northcoastrep.org or 858-481-2155 x210 to set up an appointment. For individual, foundations, and corporate sponsors, please visit our website: northcoastrep.org. We apologize for any inaccuracies, please advise the development office at (858) 481-2155 ext. 211.

SPECIAL THANKS TO

Aristophanes
B Cellars
Baker Iron Works
Barron Henzel
BijouRocks by Reine Krief
Chevron Humankind
Elisa Benzoni
Neville Engelbrecht
BijouRocks by Reine Krief
Coomber Family Wines

Dana Stein Everyday Furs
Del Mar Solana Beach Rotary
Hair by Charmaine Matic
Manscaped
Mille Fleurs
Noelle Styles Salon
Orfilla Wine
Frederick Marks
Charlotte Perry
David Ramos

Rancho Valencia Resort & Spa
San Diego Zoo
Suzan's Silver & Boutique
Dr. Squatch
Type and Graphics
Your Cause



THE REMARKABLE MISTER HOLMES

A MUSICAL COMEDY MURDER MYSTERY

Book by **OMRI SCHEIN** &
DAVID ELLENSTEIN

Directed by **DAVID ELLENSTEIN**

Lyrics by **OMRI SCHEIN**
Music by **DANIEL LINCOLN**

WORLD PREMIERE MUSICAL
JULY 20 – AUG 14

London, 1890s. A string of baffling crimes challenges the world's most notorious detective **Sherlock Holmes** and his new assistant. Not only do they **sleuth** and **scrutinize** – but they also **sing!** Fast-paced, **outrageous**, and **irreverent**; a loving homage to the original Arthur Conan Doyle tales. This world premiere musical will **thrill theatre-lovers** and **Sherlock buffs** alike.

(858) 481-1055 | northcoastrep.org