

NORTH COAST REPERTORY THEATRE
presents

DESPERATE MEASURES

BOOKS & LYRICS BY

PETER KELLOGG

MUSIC BY

DAVID FRIEDMAN

ORCHESTRATIONS BY

DAVID HANCOCK TURNER

VOCAL ARRANGEMENTS BY

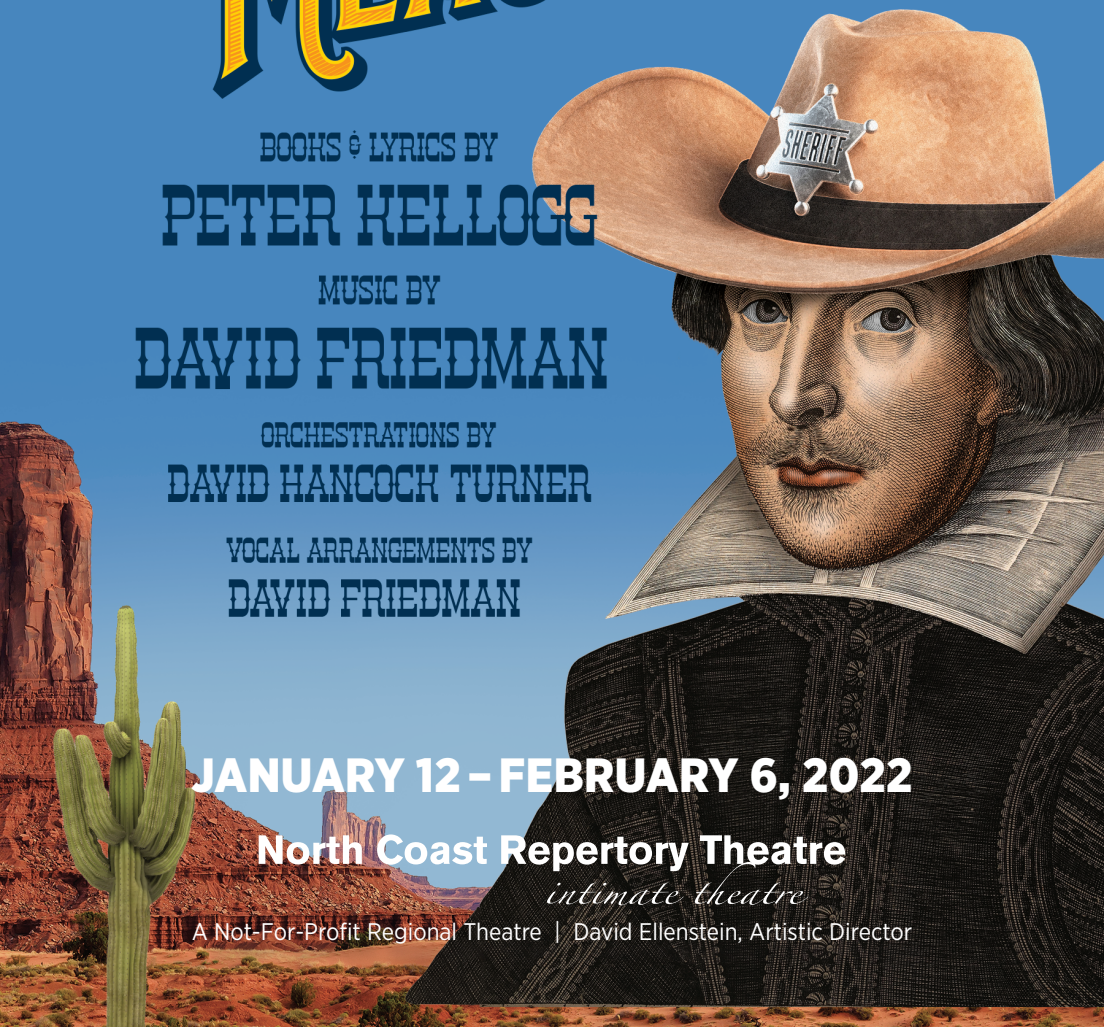
DAVID FRIEDMAN

JANUARY 12 – FEBRUARY 6, 2022

North Coast Repertory Theatre

intimate theatre

A Not-For-Profit Regional Theatre | David Ellenstein, Artistic Director





THE HOMECOMING

BY HAROLD PINTER

“Harold Pinter’s masterpiece
is first-rate.”

— THE NEW YORK TIMES CRITIC’S PICK



MARCH 2–27, 2022 DIRECTED BY DAVID ELLENSTEIN

Often regarded as Nobel Laureate Harold Pinter’s most **enduring** play, this **masterwork** of family warfare is set in an all-male household that relies on **fantasy** and **one-upmanship** for its very existence. This toxic, but familiar pattern is disrupted when a long-absent son returns with his new wife. Her presence ignites an explosive situation, one that is vicious, funny, and unsettling. Although written more than 50 years ago, **THE HOMECOMING** explores issues about **power**, **sexuality**, and **self-identity** that are still debated today. **Tony Award winner for Best Play**. *Suitable for mature audiences only.*

northcoastrep.org | Box Office: (858) 481-1055



Welcome!

Welcome to North Coast Repertory Theatre!

On behalf of our Board of Directors, Staff, and Artistic team, we are so happy that you have joined us today.

I can't think of a better way to kick off 2022 than with the West Coast premiere of the New York hit musical, **DESPERATE MEASURES**. Take Shakespeare's **Measure for Measure**, set it in the Wild West, write some hilarious songs and dialogue and you have the makings of a fun-filled great time at the theatre.

Live theatre requires our being together in person. There just is no substitute for the experience of theatrical storytelling happening in the moment with everyone in the same room. As much as we may try, electronic, cinematic or digital formats cannot recreate the communal experience we enjoy when things are happening right now in our presence. Though we must adjust to the current circumstances in our world, we believe the experience is well worth the minor inconveniences we have to deal with to bring it to life. We are grateful that you do too, and that you are with us for this production.

At North Coast Rep we believe in the power of theatre to have a positive impact on our community and the world. We have been at it for 40 years. We pledge to continue to use every talent and resource available to us to create productions that will enhance the lives of our loyal patrons.

I sincerely hope you have a joyous time today. If you have a good time, please share the news with your friends.

Long live LIVE Theatre!

Warmest regards,

A handwritten signature in black ink that reads "David Ellenstein". The signature is fluid and cursive, with a long horizontal stroke extending to the right.

David Ellenstein

DIRECTOR'S NOTE



Shakespeare will always be my first and ultimate love of the theatre. His lyrical structure mixed with his revelations of the human condition are unparalleled. We've seen his plays adapted, stretched, bent, reformed, deconstructed, and manipulated into many forms. And here, similar to *Kiss Me Kate* or *West Side Story*, we have a musical adaptation of one of his plays.

When *Desperate Measures* first came across my desk, I was immediately intrigued. Who would think to adapt *Measure For Measure* into a musical set in Wild West Arizona? They're either crazy or brilliant! Thankfully, the latter was true. The creators, Peter Kellogg and David Friedman, meticulously crafted this show entirely in clever, rhyming couplets and hilarious, catchy music with a western saloon flair. I laughed out loud in amazement while reading the script and listening to the music. I thought: "Now, this is a show for North Coast Rep!"

So here we are! You are the first audiences on the West Coast to witness the hijinks of *Desperate Measures* with an amazing cast, group of musicians, designers, and technicians. We are excited to extend our NCRT family by bringing new faces and talented voices to our stage. It has been an absolute pleasure working with each and every one of these gifted professionals. And I am ever grateful to our Music Director, Craig Bohmler, and our Choreographer, Jill Gorrie Rovasto, for their expertise and collaboration on this crazy western romp. *Desperate Measures* extracts the essential components of Shakespeare's story, throws them in a blender with bright music and sweet rhymes, and whips it on high speed until it's frothy and delicious! Cheers!

A stylized, handwritten signature in black ink that reads "C. Williams".

Christopher Williams

I dedicate this show to the genius who opened my mind to how creative and impactful musical theatre can be. His magic inspired my imagination, twisted my ear, and wrenched open my heart. To me, he is the Shakespeare of musical theatre.

Thank you, Mr. Sondheim.

NORTH COAST REPERTORY THEATRE

David Ellenstein, Artistic Director Bill Kerlin, Managing Director

PRESENTS

DESPERATE MEASURES

BOOKS AND LYRICS BY

Peter Kellogg

MUSIC BY

David Friedman

ORCHESTRATIONS BY **David Hancock Turner**

VOCAL ARRANGEMENTS BY **David Friedman**

DIRECTED BY **Christopher Williams**

CAST (in order of appearance)

JOHNNY BLOOD	Michael Louis Cusimano*
FATHER MORSE/BIG SWEDE	Rudy Martinez
SHERIFF MARTIN GREEN	Elijah Rock*
SUSANNA aka SISTER MARY JO	Jo Garcia-Reger
GOVERNOR VON RICHTERHENKENPFLICHTGETRUBER	Rusty Ferracane*
BELLA ROSE	Samantha Duval

MUSICAL DIRECTOR **Craig Bohmler**
CHOREOGRAPHER **Jill Gorrie Rovasto**
SET DESIGN **Marty Burnett**
LIGHTING DESIGN **Matt Novotny**
COSTUME DESIGN **Elisa Benzonì***
SOUND & PROJECTION DESIGN **Aaron Rumley**
SOUND MIXER **Joseph Butler**
PROPS **Phillip Korth**
HAIR & WIG DESIGN **Peter Herman**
STAGE MANAGER **Cindy Rumley***

MUSICIANS

KEYBOARD

..... **Craig Bohmler**

GUITAR, BANJO,
MANDOLIN

..... **Nikko Nobleza**

BASS

..... **Scott Harvester**

VIOLIN/MANDOLIN

..... **Dan Sankey**

Time: Late 1800s Place: Somewhere out west

There will be a 15 minute intermission

Season 40 has been made possible by the generosity of The Step Family Foundation

This production has been made possible by the generosity of Berit and Tom Durler

New York Off-Broadway production

produced by Pat Addiss, Mary Cossette, Willette Klausner

World Premiere Production Presented by The York Theater Company,

James Morgan, Producing Artistic Director, Evans Haile, Executive Director

Originally Presented in the New York Musical Theater Festival, Isaac Robert Hurwitz, Executive Director and Producer

Presented by special arrangement with Stage Rights (www.stagerights.com)



UNITED +
SCENIC
ARTISTS

*The actor or stage manager appears through the courtesy of Actors' Equity Association, the union of professional actors and stage managers in the United States. Actors' Equity Association (AEA), founded in 1913, represents more than 45,000 actors and stage managers in the United States. Equity seeks to advance, promote and foster the art of live theatre as an essential component of our society. Equity negotiates wages and working conditions, providing a wide range of benefits, including health and pension plans. AEA is a member of the AFL-CIO, and is affiliated with FIA, an international organization of performing arts unions. The Equity emblem is our mark of excellence. www.actorsequity.org

DESPERATE MEASURES

ACT I

<i>Johnny Blood</i>	All
<i>That's Just How It Is</i>	Sheriff
<i>Someday They Will Thank Me</i>	Governor
<i>Look In Your Heart</i>	Susanna & Governor
<i>It's Good To Be Alive</i>	Johnny
<i>It Doesn't Hurt To Try</i>	Quartet
<i>It's Getting Hot in Here</i>	Bella
<i>The Way That You Feel</i>	Trio
<i>Stop There</i>	Sheriff
<i>In the Dark</i>	All

ACT 2

<i>What a Night</i>	Governor
<i>About Last Night</i>	Susanna & Governor
<i>Just for You</i>	Bella & Johnny
<i>What Is This Feeling</i>	Susanna
<i>Life Takes You by Surprise</i>	All
<i>Good To Be Alive (Reprise)</i>	Johnny
<i>It's a Beautiful Day</i>	Bella & Susanna
<i>Finale</i>	All
<i>Bows</i>	Instrumental



NORTH COAST REPERTORY THEATRE BOARD OF DIRECTORS



Marc Tayer⁺
President



Marilyn Tedesco^{*+}
Vice President



Elizabeth Tresp
Vice President



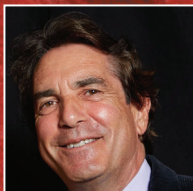
Berit Durler⁺
Treasurer



Judy Wheatley
Secretary



Sharon Stein^{*+}
Immediate Past President



Steve Chapman



Marion Dodson^{*}



David Ellenstein



Peter House



Richard H. Leib, Esq



Beverly Liberman



Patty Moises



Susan Roth



Katy Tanghe



Karen Wilder



Hannah Step
Director Emeritus

^{*} Denotes past President ⁺ Denotes Executive Committee member

Photography: Kevin M. Connors, Coast Highway Photography and Aaron Rumley, Berit Durler photo courtesy of San Diego Zoo Global

PROFILES



PETER KELLOGG (Books & Lyrics) has two Tony nominations for book and lyrics to a musical for *Anna Karenina* (composer Dan Levine), which toured in Japan and was broadcast on Japanese Public TV in 2006. With David Friedman, he created *Desperate Measures*, which won 2018 Drama Desk Awards for Best Music and Best Lyrics, as well as The Outer Critics Circle and Off-Broadway Alliance Awards for Best Musical. CD available on Amazon. Also with David: *Chasing Nicolette* (based on the French romance, *Aucassin and Nicolette*), produced at Westport Playhouse, the Prince in Philadelphia, and Village Theatre in Seattle; and *Stunt Girl*, based on the life of Nellie Bly, New York City's first female reporter, which premiered at Village Theatre. With composer Steve Weiner, he has written a 10-person musical based on the Sheridan play *The Rivals*, which premiered at Bristol Riverside Theatre last fall.

THIS ARTIST SPONSORED BY DON ROTH



DAVID FRIEDMAN (Composer) in addition to *Desperate Measures* (2018 Drama Desk Best Music Award), David Friedman has written four other musicals with Peter Kellogg: *Nicolette & Aucassin*, *Nellie Bly*, *Money Talks*, and *Lincoln in Love*; *King Island Christmas* (with Deborah Brevoort — 50+ productions worldwide); *Koga* (with Philip Kholos) a web series for children about using martial arts and kindness to solve everyday problems, and is currently collaborating with Elizabeth Dewberry on a musical about Temple Grandin. David has written songs for everyone

from Disney to Diana Ross, produced all the late/great Nancy LaMott's CDs and wrote many of her best-known songs, conducted and vocal arranged six musicals on Broadway and numerous Disney Animated Films ("Beauty & The Beast," "Aladdin," "Pocahontas," "The Hunchback of Notre Dame") wrote songs for "The Lizzie McGuire Movie," "Aladdin and the King of Thieves," "Bambi II," and "Trick," scored three television series, performed his revue *Listen To My Heart – The Songs of David Friedman* Off-Broadway, all over America, and abroad, and co-wrote 100 songs (with Kathie Lee Gifford) for the Today Show's 'Everyone Has a Story' Segment. David is a best-selling metaphysics author with five books including "The Thought Exchange," and "We Can Be Kind — Healing Our World One Kindness at a Time," based on his song of the same name. For more information, go to www.MIDDERMusic.com.

THIS ARTIST SPONSORED BY JUDITH & DR. CHARLES WHEATLEY



CHRISTOPHER WILLIAMS (Director) is the Associate Artistic Director and Casting Director at NCRT. Directing credits include: *Visiting Mr. Green, Last of the Red Hot Lovers, Gabriel* (NCRT); *Beau Jest, Leading Ladies* (Moonlight Stages); *Halpern and Johnson* (AZ Jewish Theatre); *Julius Caesar* (New Village Arts); *Romeo & Juliet* (Southwest Shakespeare Co); Jacob Marley's *A Christmas Carol, The Elephant Man, Biloxi Blues, Light Falling Down, Proof* (Oceanside Theatre); *I Hate Hamlet* (Intrepid Theatre). Christopher produced the WWII feature film "Walking With the Enemy" starring Ben

Kingsley and Jonas Armstrong.

THIS ARTIST SPONSORED BY ROBERT J. KILIAN



MICHAEL LOUIS CUSIMANO* (Johnny Blood) is thrilled to make his North Coast Rep debut! Select SoCal credits: *The Last Five Years, The Rocky Horror Show, On The 20th Century* at Cygnet Theatre; *Once, Big Fish, American Rhythm, A Christmas Carol* at Lamb's Players; *The Tale of Despereaux* at the Old Globe; *Girlfriend, Homos or Everyone in America, This Beautiful City* at Diversionary, *The 39 Steps* at Glendale Centre Theatre, *Grease* at Cabrillo Musical Theatre, *Metamorphoses* at Santa Barbara Ensemble. TV credits: "Devil in the Details" and "A Moment in Crime" on

ID. Michael is a 3-time SD Critics' Circle Award Nominee and won the SD Critics' Circle Craig Noel Award for "Actor of the Year" for his body of work in 2019. BFA graduate of Carnegie Mellon School of Drama.

THIS ARTIST SPONSORED BY DAVID RAMOS



RUDY MARTINEZ (Father Morse/Big Swede) is making his North Coast Rep debut. He is a little bit of this and a whole lot of that...he mostly bakes and he sometimes acts. Previous roles include Quixote in *Man of La Mancha*, Sweeney Todd in *Sweeney Todd*, Tevye in *Fiddler on the Roof*, Scrooge in *A Christmas Carol*, Che, Magaldi and Peron in *Evita*, Baker in *Into The Woods*, El Gallo in *The Fantasticks*, Gomez in *The Addams Family*, Kevin in *In The Heights* and Valentin in *Kiss of the Spider Woman*.

He is a graduate of Manhattan School of Music Professional Musical Theatre Program and spent two seasons performing at The Hollywood Bowl with The Mitch Hanlon Singers. Rudy is the creative behind Man Bakes Cake, has appeared on "Cake Wars," and was the winner of Food Network's "Halloween Baking Championship." IG:@manbakescake.

THIS ARTIST SPONSORED BY DAVID K. JORDAN

PROFILES



ELIJAH ROCK* (Sheriff Martin Green) is thrilled to be making his debut at North Coast Repertory Theatre. Triple threat artist, Rock's award-winning stage performances include Winner of the NAACP Theater Award for Best Male Equity performer for his role as Roland Hayes in *Breath and Imagination* and Ovation Award Nominee for his role as the Cotton Club star Cab Calloway in the musical *I Only Have Eyes For You*. Other notable roles include Porgy in *Porgy and Bess* with the Ensemble Theatre and The Crooner in *Words by Ira Gershwin* with the Colony Theatre directed by David Ellenstein. Rock also had TV appearances in Showtime's series "Masters of Sex." As of recently, Rock has released his sophomore American Songbook album, "Matters of The Heart" which is available now. Jazz critic, Scott Yanow said the following in his LA Jazz Scene review, "Rock's swinging style and large voice recall Tony Bennett, Frank Sinatra and Nat King Cole of the 1950's without closely copying any of them." Proud member of AEA. www.elijahrock.com

THIS ARTIST SPONSORED BY JANET CAULK



JO GARCIA-REGER (Susanna aka Sister Mary Jo) is so excited to be making her North Coast Rep Debut! Jo was one of the 2019/20 acting interns at the Tony Award-winning Cincinnati Playhouse in the Park and graduated from Indiana State University with a degree in Acting, Music & Dance. She was last seen as Rosalind in the Texas Shakespeare Festival's touring production of *As You Like it* and Maria in their touring production of *Twelfth Night*. Other regional musical credits include Marian in *The Bridges of Madison County* at the Texas Shakespeare Festival, Elizabeth Benning in *Young Frankenstein* at Crossroads Repertory Theatre, Abilene in the *Miraculous Journey of Edward Tulane* at the Cincinnati Playhouse in the Park, and Jenny in *Company*, which toured various cities in Vietnam. She would like to thank her family, aka the Reger 4, for their endless love and support.

THIS ARTIST SPONSORED BY JILL HALL



RUSTY FERRACANE* (Governor Richterhenkenpflichtgetruber) is a professional actor, singer and director, appearing in productions for regional theatres across the country including the American premier of Craig Bohmler's musical *Enter the Guardsman*, Off-Broadway. Some of his favorite roles include Don Quixote in *Man of La Mancha*, Georges in *La Cage Aux Folles*, Harold Hill in *The Music Man*, Emile de Becque in *South Pacific* and Bruce Bechdel in *Fun Home*. He was the founder and producing artistic director of the award-winning theatre company, The Actors Group. As a director, he has worked at many companies in Arizona, including Mesa Encore Theatre, Fountain Hills Theatre, Theater Works, Arizona Opera and ProMusica Arizona. He has taught musical theatre performance at Arizona School for the Arts, Phoenix

Theatre and The Taipei Performing Arts Center in Taiwan. Information on his two CDs and performance schedule are available on his website at www.RustyFerracane.com

THIS ARTIST SPONSORED BY DORI & JEFF PATTERSON



SAMANTHA DUVAL (Bella Rose) is making her North Coast Rep debut in *Desperate Measures*. National Tours: *Cirque Musica*, *The Celtic Ladies*. Off-Broadway: *Days of Rage* at Town Stages, *Intersecting Chords* at NYMF, *Diva: A Night of Celine Dion*, Green Room 42. Regional Theatre: Pattie in *Smokey Joes Café* at the REV theatre, Bunny in *Accomplice* at La Jolla Playhouse, *Kinky Boots* at Gateway Playhouse, Irene in *Hello Dolly*, California Theatre, Starred as Elsa in *Frozen* with Disney Cruise Line, World Premiere of *Emergency the Musical*, World Premiere *Flesh and Spirit* at NYC Works Festival. Samantha has been seen recently performing her cabaret show on Cruise lines including Celebrity, Holland America and Silver Sea. Samantha is also a resident performer in Marty Thomas Presents *Diva* in NYC. Love and thanks to her amazing husband Justin, agents Danny and Meaghan and her family and friends. Happy to be back in her home state of California. @samduvalsings, www.samanthaduval.com

THIS ARTIST SPONSORED BY MARY ANN & DAVID PETREE

CINDY RUMLEY* (Stage Manager) Credits include: *Dancing Lessons*, *Another Roll of the Dice*, *All in the Timing*, *Holmes & Watson*, *A Funny Thing...*, *How The Other Half Loves*, *Last of the Red Hot Lovers*, *The Spitfire Grill*, *Laughter on the 23rd Floor*, *Ain't Misbehavin'*, *Way Downriver*; *William Faulkner's 'Old Man'*, *Chapatti*, *Side By Side* By Sondheim, *Freud's Last Session*, *Mandate Memories*, *Dames at Sea*, *Two By Pinter*, and *Visiting Mr. Green* with North Coast Rep. Cindy holds an M.F.A in stage management from UC Irvine.

CRAIG BOHMLER (Musical Director/Keyboard) is a composer and musical director whose works have been performed in Europe, North America and Japan. Primarily a composer for the "singing theater" and the solo voice, Craig has 3 operas and 14 musicals to his credit as well as 200 art songs, and numerous choral and orchestral works. His musicals *Gunmetal Blues* (O'Neill Center -1991) and *Enter The Guardsman* (Olivier Award Nominee for "best musical") have both played in London and Off-Broadway as well as in many regional and international theatres. He was composer-in-residence for Arizona Opera from 2012-2017 where his western opera *Riders Of The Purple Sage* premiered in February 2017 and was subsequently broadcast internationally. He is musical director and arranger for the "3 Redneck Tenors" which has toured world-wide for over 16 years and was featured on "America's Got Talent." His new musical *A Beautiful Place* will be featured in Phoenix Theatre's new work's program in May 2022. He is published by Theatrical Rights Worldwide, Santa Barbara Music Publishing, Concord Theatricals, and Dramatic Publishing, as well as recorded by Columbus, Centaur, Original Cast, Naxos, and BMS records. More detailed information and recordings may be found at Craigbohmler.com

PROFILES

JILL GORRIE ROVATSOS (Choreographer): *Hairspray* (Craig Noel Award), *Crazy For You*, *42nd Street*, *Damn Yankees*, *A Christmas Story*, *Singin' in the Rain* (San Diego Musical Theatre), *Romance Romance*, *Tomfoolery*, *Man With A Load of Mischief*, *Humbug Holiday Spectacular* (North Coast Rep), *Pal Joey*, *A Little Night Music* (SDSU), *Joseph...Dreamcoat* (CCA Theatre), *The 25th Annual...Spelling Bee* (Intrepid), *Grease* (European Tour), *Mambo Italiano*, *Oklahoma!*, *Hello Dolly* (Westchester Broadway Theatre, NY), *Gary Goldfarb: Master Escapist* (NYMF), *The People Vs. Mona* (Abington Theatre, NYC). B.F.A. NYU Tisch School of the Arts (Dance), M.F.A. SDSU (Musical Theatre) Educator: SDSU, NYU, City College, Mesa College, Grossmont College, AMDA, CAP21. Mom: Avery and Zachary

MUSICIANS

NIKKO NOBLEZA (Guitar, Banjo, and Mandolin) has been playing guitar for 18 years and plays a variety of styles. He has earned a Bachelor of Music degree in Jazz Studies from San Diego State University. Some of the theatres he has played for include North Coast Repertory Theatre (*Spitfire Grill*), The Old Globe, Cygnet Theatre, Moonlight Stage Productions, San Diego Musical Theatre, and San Diego Repertory Theatre. Nikko is also the in-house composer for two film production groups, Almost Good Films and Jabronie Pictures.


SCOTT HARVESTER (Bass) just finished playing the bass for *Always...Patsy Cline* at North Coast Rep. As an electric and upright bass player, he has experience playing a variety of musical styles but especially enjoys opportunities to play American roots music. When he is not sitting in on a production, he can be found playing bluegrass, country, and gospel music locally

DAN SANKEY (Violin/Mandolin) is very pleased to be back at NCRT. In addition to violin and mandolin, Dan is also an accomplished banjo and guitar player and has performed at numerous festivals, concerts, studio sessions, clubs, etc. His theatre credits include performances at the Old Globe Theatre, San Diego Rep., La Jolla Playhouse and various other regional theatres and productions. Dan is originally from Pennsylvania, and now makes his home in San Diego. Dan would like to thank the staff and NCRT, and also his lovely wife, Virginia, for her love and support and for allowing him to play his banjo around the house.

CREATIVE STAFF

MARTY BURNETT (Set Design) Resident Designer at North Coast Rep since 1992 and has designed more than 200 productions for the theater. Other design venues include Sahara and Hacienda hotels in Las Vegas, Claridge Hotel, Atlantic City and Drury Lane Chicago.

MATTHEW NOVOTNY (Light Design) is pleased to be designing another show for North Coast Rep, where he has designed close to forty shows over the past seven years. Matthew



is currently the Lighting Designer in Residence for San Diego Musical Theatre as well as North Coast Rep, and his work can be seen at a wide variety of theatres across San Diego. Matthew holds a B.A. in Technical Theatre from San Diego State and a master's degree in Lighting Design from Boston University. Matthew is married to his beautiful wife Amanda, with 5 AMAZING children: Ragan, Harper, Heston, Maddex and Harrison.

ELISA BENZONI (Costume Design) is thrilled to be working on her fourth season at North Coast Rep including numerous Craig Noel nominated productions. Elisa has also worked on over a hundred productions across Southern California with theatres such as The Old Globe, La Jolla Playhouse, Geffen Playhouse, South Coast Repertory Theatre, Laguna Playhouse, San Diego Repertory Theatre, Diversionary Theatre and New Village Arts. Being Italian born, Elisa has also had the opportunity to work and perfect her craft in Europe. Elisa holds a costume design M.F.A. from UCSD where she currently is an adjunct professor. www.elisabenzoni.com

AARON RUMLEY (Sound & Projection Design) has worked on over 120 shows at North Coast Rep, over 50 as a stage manager, over 20 as a designer.

JOSEPH BUTLER (Sound Mixer) is an audio engineer and musician, born and raised in San Diego, CA. Recent credits include: *I Love You You're Perfect Now Change*, *Miss You Like Hell*, *Little Women*, *Wizard of Oz* (Patio Playhouse), and *Hunchback of Norte Dame* (Living Light Theater). BA of Science in Audio Engineering from Arts Institute of California, San Diego.

PETER HERMAN (Hair & Wig Design) has previously designed wigs for over 30 North Coast Rep productions. Peter teaches wig and makeup design at San Diego State University. He is glad to be part of the creative team on this show.

PHILLIP KORTH (COVID-19 Compliance Officer/Props) is an actor, writer, craftsman, and educator. He earned BAs in Acting and Creative Writing from Western Michigan University and his MFA in Acting from the University of Connecticut. He is a Veteran of the United States Marine Corps and served two tours of duty in Iraq. In addition to designing and managing props for NCRT, Phillip is also the Education Associate at The Theatre School @ North Coast Rep.

The videotaping or other video or audio recording of this production is strictly prohibited.

This event is supported in part by the California Arts Council, a state agency.

Learn more at www.arts.ca.gov.



**Help support World Class Professional Theatre
by donating to North Coast Rep!**

North Coast Rep Staff

David Ellenstein

Artistic Director

Bill Kerlin

Managing Director

Benjamin Cole

*Director of Theatre School,
Education & Outreach*

Nancy Richards

*Director of Marketing,
& Public Relations*

Denise Young

Director of Development

Christopher Williams

Associate Artistic Director

Marty Burnett

Technical Director

Jeff Needham

*Patron Services & Information
Technology Director*

Aaron Rumley

Production Manager

Matt FitzGerald

Associate Production Manager

Fran Morilak

Bookkeeper

Gabrielle Holley

Office Manager

Noelle Marion

Marketing Assistant

Phillip Korth

Education Associate

Michael Podd

Sales

Gabrielle Holley

*House Manager Supervisor/
Volunteer Coordinator*

Alyssa Cook

Patte Hughes

Anissa Ruiz

House Manager

Michelle Millum

Box Office Manager

Melani Bruce

Alyssa Cook

Anissa Ruiz

Patron Services

Nicolas Castillo

Ciarlene Coleman

Deb Daly

Phillip Korth

Gina McKee

Kayla Rene

Roxas Shepherd

Theatre School Teaching Artists

NORTH COAST REPERTORY THEATRE

North Coast Repertory Theatre, under the artistic leadership of David Ellenstein since 2003, is a professional Equity theatre currently celebrating its 40th Season. North Coast Rep has received critical acclaim from media and audiences alike, and has evolved into one of the area's leading performing arts organizations. North Coast Rep prides itself on employing the majority of its actors from Actors' Equity Association for its high quality, award-winning productions, and staging works by established and emerging playwrights. Throughout its history, North Coast Rep has created a platform where artist and audience thrive through the intimacy of live theatre, recognizing the power of theatre to challenge complacency, revitalize the imagination, nurture the unexpected and embrace the variety and diversity in our lives.

GENERAL INFORMATION

Theatre Address

987 Lomas Santa Fe Dr.

Suite D

Solana Beach, CA 92075

Box Office

Hours are Monday-Sunday

Noon to 4 p.m.

Performance days

Noon to curtain.

858.481.1055

Fax 858.481.1527

Group Sales

858-481-2155 ext. 202

Administrative Office

977 Lomas Santa Fe Dr.

Suite E

Solana Beach, CA 92075

Hours are: 9 a.m. to 5 p.m.

858.481.2155

Fax 858.481.0530

Website

northcoastrep.org

Restrooms

Accessible restrooms are located in our cafe and additional restrooms are located upstairs in the courtyard area.

Parking

There is plenty of safe, free parking directly in front of the theatre and additional parking is available behind the theatre.

Late Arrivals

Late arrivals will be seated at the discretion of the house manager. Latecomers may be asked to wait until intermission to be seated or reschedule. We encourage our patrons to plan ahead as weather and traffic may delay your arrival.

Show Content & Age Restrictions

North Coast Rep does not offer advisories about subject matter, as sensitivities vary from person to person. If you have any questions about content, age-appropriateness or stage effects (such as strobe lights or theatrical fog) that might have a bearing on patron comfort, please contact the box office at (858) 481-1055. All patrons must have a ticket regardless of age. No children under 6 years of age will be admitted to main stage productions. NORTH COAST REP IS NOT RESPONSIBLE FOR LOST OR STOLEN ITEMS.

In consideration of your fellow patrons...

For your safety and as a courtesy to the performers, please remain seated until the performance has ended and the house lights have come on. Please turn off cell phones, watch alarms and beepers. Heavy fragrances (perfumes/colognes) can be distracting and cause allergic reactions for some guests. Please be considerate of others. Use of camera and recording devices is not permitted in the theatre. Smoking is permitted only in the outdoor courtyard of the theatre. Use of a ticket constitutes acknowledgement of willingness to appear in photographs taken in public access areas of the theatre and releases it and all others from liabilities resulting from such photographs.

DAVID ELLENSTEIN
ARTISTIC DIRECTOR

Born into a theatrical family, David has worked in theatres across the country. Before joining North Coast Rep in 2003 he served as Artistic Director for the Los Angeles Repertory Company and the Arizona Jewish Theatre Company (AJTC). A veteran of over 250 theatrical productions, directorial favorites include:

North Coast Rep – *Ben Butler, Dr. Glas, Becoming Dr. Ruth, Einstein Comes Through, Trying, An Iliad, A Christmas Carol, Same Time, Next Year, The Outsider, All in the Timing, Holmes & Watson, A Funny Thing Happened on the Way to the Forum, The Father, This Random World, Travels with My Aunt, The Illusion, Hedda Gabler* (World Premiere Translation), *Way Downriver*; *William Faulkner's 'Old Man'* (West Coast Premiere), *Sherlock Holmes and the Adventure of the Great Nome Gold Rush* (World Premiere), *Side By Side By Sondheim, Chapter Two, Freud's Last Session* (San Diego Premiere), *Faded Glory* (World Premiere), *Mandate Memories* (World Premiere), *Becoming Cuba* (World Premiere), *Time Stands Still, Words by: Ira Gershwin and the Great American Songbook* (World Premiere), *Two by Pinter: The Lover and The Dumb Waiter, HENRY IV Part 1, Heroes, My Name is Asher Lev, The Drawer Boy, Becky's New Car, Ghosts, The Tempest, Talley's Folly, Over the Tavern, Old Wicked Songs, The Dresser, Jacques Brel is Alive and Well and Living in Paris, Madagascar, A Shayna Maidel, The Honky-Tonk Angels, Rashomon, A Moon for the Misbegotten; Tuesdays With Morrie; Collected Stories; Halpern and Johnson; Romeo and Juliet; Amy's View; Einstein Comes Through* (also co-author); *The Chosen; A Life in the Theatre; Story Theatre and Charley's Aunt. Coconut Grove Playhouse* – *Sonia Flew* starring Lucie Arnaz; *Halpern and Johnson* starring Hal Linden and Brian Murray. **Papermill Playhouse** – *The Chosen* starring Theodore Bikel and John Lloyd Young. **59E59** – *His Royal Hipness Lord Buckley. Park Square & Colony Theatre* – *Words By. Portland Stage* – *Halpern and Johnson. Renaissance Theatre* – *Long Day's Journey Into Night. Actor's Theatre of Phoenix* – *Rabbit Hole. Alabama Shakespeare Festival* – *The Glass Menagerie, Rocket City* (World Premiere) and *Honky-Tonk Angels. Laguna Playhouse* – *Chapatti, Alexandros* (World Premiere). **Southwest Shakespeare Company** – *Cyrano de Bergerac. AJTC* – *Awake and Sing. Meadow Brook Theatre* – *A Christmas Carol. Portland Rep* – *Conversations With My Father and Gaslamp Quarter Theatre* – *A Shayna Maidel.*

Winner of numerous theatre awards, including the San Diego Theatre Critics Circle Award for "2018 Director of the Year."

Favorite roles as an actor include Andrey Botvinnik in *A Walk in the Woods*, Max Prince in *Laughter on the 23rd Floor*, Matt in *Talley's Folly* at North Coast Rep, title roles in *Hamlet* at Los Angeles Theatre Center and Los Angeles Repertory Company; Tevye in *Fiddler on the Roof* at Moonlight Stage, Richard III at California Shakespeare Festival; Einstein in *Picasso at the Lapin Agile* at Laguna Playhouse; Calisto in *The Illusion* at the Arizona Theatre Company; Jonathan in *Sight Unseen* at North Coast Rep and Portland Repertory Theatre.

Film and television credits include over three dozen roles including "Star Trek IV," "The Practice," "Foul Play," "Christine Cromwell," "Renegade," "Eight is Enough" and "General Hospital." David has also been guest faculty for numerous universities including California State Northridge, Cal Arts, and Shakespeare workshops privately. David lives with his beautiful wife Denise and their amazing sons Jamie and Will.

For sponsorship or to become a donor, please contact:

Denise Young
Director of Development
858-481-2155 ext 210
denise@northcoastrep.org

For questions regarding the Theatre School@ North Coast Rep, please contact:

Benjamin Cole
Director of Theatre School, Education and Outreach
858-481-2155 ext 216
ben@northcoastrep.org

To advertise in this program or for other advertising opportunities, please contact:

Nancy Richards
Director of Marketing, & Public Relations
858-481-2155 ext 220
nancy@northcoastrep.org

For group sales information and tickets, please contact:

Michael Podd,
858-481-2155, ext. 202
groupsales@northcoastrep.org

For tickets, please call or go online to:

858-481-1055
www.northcoastrep.org
Toll-free 888-776-NCRT (6278)

Carm Greco
Volunteer Press Assistant

Janet Caulk
Joy DeLee Marrow
Volunteers

Donna D'Angelo
Barron Henzel
Graphic Designers

Denise Young
Webmaster

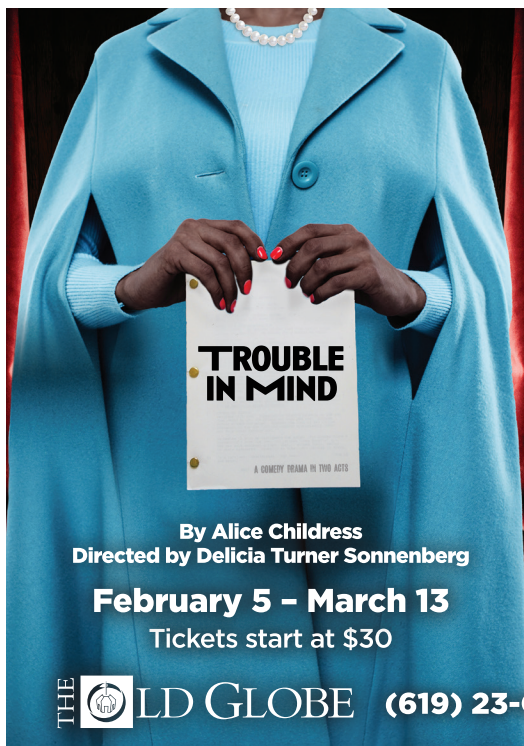


Whether you are into performing arts or visual arts, be the first to know what is happening in San Diego's vibrant arts scene with the KPBS/Arts newsletter.

Visit and sign up
for our newsletter at

kpbs.org/arts

KPBS is a public service of San Diego State University.



A Thrilling New Production of a Too-Often Neglected American Classic

New York, 1955. A leading Black actress and a multiracial cast rehearse a challenging new Broadway play set in the South. Backstage rivalries and showbiz egos cause excitement of their own, but artistic differences between the cast and the White director soon bubble to the surface, revealing the truths that American drama covers over and the ways in which even well-meaning people can harm others under the guise of helping. *The New York Times* recently called Alice Childress's groundbreaking *Trouble in Mind* "a rich, unsettling play that lingers in one's memory long after its conclusion."

Contains strong language.

By Alice Childress
Directed by Delicia Turner Sonnenberg

February 5 - March 13

Tickets start at \$30



OLD GLOBE

(619) 23-GLOBE • **TheOldGlobe.org**

SCENE AT NORTH COAST REP

Spotlight Gala

AUGUST 29, 2021

PHOTOS BY DAREN SCOTT



Ashley & Nathan King



Roxane Carrasco,
Nancy Richards



Omri Schein



Dan Morilak, Fran Morilak,
Judy Tullie & Tom Tullie



Brian Tresp, Elizabeth Tresp,
Chivon Reyes Prabhakar & Arvid Prabhakar

GIFTS IN HONOR & MEMORY

Cindy Baker
in honor of Lawrence Baker

Diane and Elliott Feuerstein
in honor of Marina and Rafael Pastor

Mimi Lee
in honor of Jay and Julie Sarno

Marsha Janger and Richard Shapiro
in honor of Marc Tayer

Dale Ordas
in memory of Ruth H. Ordas

Cindy Baker
in honor of Lawrence Baker

Ann and Charles Peabody
in honor of Jay and Julie Sarno

Mary and Fred Meyers
in honor of Jay Sarno

Dr. John and Carolyn Strauss
in honor of Jay and Julie Sarno

Jeanmarie Simpson
in memory of J. Todd Adams

Strega Cerbone-Colangelo
in memory of her father
who would have turned 70

Ellen Geer
in honor of David Ellenstein and
everything he has done through the years

William Eugene Friedel
in honor of Nancy Richards

Jeanne Hesse
in honor of Marty's Birthday

Alina Bokovikova
in honor of Marty's Birthday

Paul Burnett
in honor of Marty's Birthday

Jim Johnston
in honor of Marty's Birthday

Jeannine Marquie
in honor of Marty's Birthday

Deborah McKenney
in honor of Marty's Birthday

Greg Micek
in honor of Marty's Birthday

Chuck & Veronica Baker
in honor of Marty's Birthday

Michele T. Nelson
in honor and memory Robert Nelson

Carolyn & Dr. John Strauss
in honor of Jay and Julie Sarno

THANK YOU

NORTH COAST REPERTORY THEATRE LEGACY CIRCLE MEMBERS

Irving Applebaum[†]

Catherine & Chuck Boyer

Dr. Cynthia & Martin Davis

Sam De Luca

Berit & Tom Durler

Henny Eagle[†]

Arthur Ecker[†]

David Ellenstein & Denise Young

Glenn H.[†] & Ruth E.[†] Evans

Tom & Donna Golich

John Christopher Guth[†]

Bea Herbert[†]

Elaine[†] & Leonard Hirsch

Bob Jacobs[†]

Jennifer Jones

Harv & Louise Kauffman

Robert J. Kilian & Kathleen M.[†] Slayton

Rita Koor

Geraldine Lamkin

Peter Manes & Yoko Sakaguchi

Albert[†] & Jorie[†] Mark

Maurice[†] & Reet Miller

Roger & Nancy Moore

Marilyn & Arthur Neumann

Dave Roberts & Wally Oliver

Eduardo & Teri Rodriguez

Jay & Julie Sarno

Don & Becky Sciglimpaglia

Gary L. Seger[†]

Helen Starr[†]

The Step Family Foundation

Eva Trieger

Andrea Vanderslice

John & Cathy Weil

Martha Witz[†]

[†]Indicates members whose gifts have been realized

To join the Legacy Circle, please call
Denise Young at 858-481-2155, ext. 210



WENDY CULLUM The North Coast Rep family has lost an early and valued member. Wendy appeared in many productions here and spent countless hours volunteering her time. Her delicious baking, talent, and sense of humor will be missed by all those who knew her.

SUPPORT AND GIFTS TO NORTH COAST REP

**Help support World Class Professional Theatre
by donating to North Coast Rep!**



LEADING ROLES

North Coast Repertory Theatre thanks the following individuals and organizations for supporting our mission to consistently deliver high quality professional theatre to our audiences in North County. These leadership donors make that commitment possible. Consider joining our family of arts benefactors with a gift of your own at whatever level is appropriate.

All donations listed from November 1, 2020 to November 30, 2021. The cross (†) denotes deceased.

Benefactor's Circle \$100,000+

Anonymous
The Step Family Foundation

Founder's Circle \$50,000+

The Dodson Family Trust
Helen Starr†

President's Circle \$25,000+

Tom & Berit Durler
Frank M. & Lee Goldberg
Foundation
Mandell Weiss Charitable Trust
A. Fenner Milton

Producer's Circle \$10,000+

The Board Fund Schwab Charitable
Jamie Carr
Janet Caulk
Martin & Dr. Cynthia Davis
Sam De Luca
Marjorie Frye
Pam & Harold Fuson
Leonard Hirsch
Holly Smith Jones
John & Diane Kane
David Laing
The Jeffrey & Sheila Lipinsky
Family Foundation
Nate McCay & Jacqueline Bridge
Patricia Moises
Roger & Nancy Moore
Jennifer Moores
Jay & Julie Sarno
Don & Becky Sciglimpaglia
Dr. Robert Kilian
Jeanette Stevens
Molli Wagner
Dr. Charles & Judith Wheatley

Playwright's Circle \$5,000+

KJF Fund @ Fidelity Charitable
Ken Baca
Bobbie Ball
Warren & Eloise Batts
Dr. Marilyn Bruno
Rich & Cathy Buller
Steve & Fang Fang Chapman
Eric Cohen & William Coltellar
Richard & Stella Svetlana Dreyfuss
Adrienne Feldner
Jim & Katie Fish
Diana Glimm
Tom & Donna Golich
Jill G. Hall Fund
at The San Diego Foundation
Dr. Jerrold Heller
Elizabeth Anne Johnson
David K. Jordan
Beverly & Herb Liberman
Elizabeth Ludington
Fran & Dan Morilak
Marina & Rafael Pastor
Dori & Jeff Patterson
David & Mary Ann Petree
Gerry & Jeannie Ranglas
Adam & Marti Rosenberg
Don Roth
Stanley Siegel
Jerome & Sharon Stein
Family Foundation
The Tanghe Family
David Tansey &
Kathleen Roche Tansey
Marc & Wendy Tayer
Marilyn Tedesco
Elizabeth & Brian Tresp
Judith & Tom Tullie
Jo & Howard Weiner

Karen B. Wilder
Fritz & Norah Wolff

Director's Circle \$3,000+

Anonymous
Alexia A. & Paul Anas
Barbara Gene Anderson
Robert Campbell & Kristen Caverly
Dr. Jeffrey & Carol Chang
Rick & June Collins
Beverly Fremont
Peter House & Carol Childs
The Jeffrey and Hillary Liber
Fund of the Jewish Community
Foundation
Steve & Jackie Palmer
Robin J. Lipman & Miro Stano
Nancy & Jim Saw
Dr. Thomas A. Schweller
Marsha Janger & Richard Shapiro
Mark Silver &
Katherine Michaud-Silver
Lisa & David Tarson
Cathy & John Weil Fund of The
Jewish Community Foundation

Designer's Circle \$1,000+

The Alpert Family Foundation
@ The San Diego Foundation
Edith Andrew-Akita
Laura Applegate
The Assaf Family Fund
@ The San Diego Foundation
Dr. Stephen & Carol Davidson Baird
Lawrence & Cindy Baker
Jennifer Ball & Michael Varney
Kent & Barbara Freundt
John Barbour
Terry & Anja Bubeck Barrett
Ryan Belmer
Steve & Cindy Blumkin

SUPPORT AND GIFTS TO NORTH COAST REP

Jules Borack
Catherine Boyer
Dr. Dick & Ginny Bridy
Laverne & Blaine Briggs
Loyce R. Bruce
Andy & Sally Buffington
Cathy Busby
Dr. Joel & Susan Buxbaum
Janice Callahan
Cate Caplin, the Caplin Foundation
Holly & John Carney
Denia & John Chase
Elaine Chortek
Gigi Cramer
Dr. Bonnie Ann Dowd
Mark & Virginia Dowling
Doug Druley & Judith Sedler
Christopher Duke &
Harriet Kounaves
David Ellenstein & Denise Young
Diane & Elliot Feuerstein
Scott & Franci Free
Richard French & Gary Margolin
Sandi Lanzaotta
Cheryl & Ira Gaines
Russell H. Ginns
Dr. Thomas Goergen
Cathy Golden
Charles Cuccaro & Ana Maria Grace
Carrie & Jim Greenstein
Jamie Henson &
Robert V. Houskeeper
Marion & Bill Hinchy
Mark & Candise Holmlund
George & Maryka Hoover
Samuel E. and Reena Horowitz
Bronson Jacoway
Dr. Seth Krosner & Phil Johnson
Barbara & Dick Justice
Dr. Tom & Katherine Foster
Harv & Louise Kauffman
Sheldon Kleiman
Mervyn & Sandy Kodesh
Joseph & Donna Labonte
Geraldine E. Lamkin
Clifford & Janet Lange
Sharon & Richard Leib
Sue Ellen & Pierre Leroy
Bernice Leve
Peter Manes & Yoko Sakaguchi
James & Lydia Martin
Kari & Ken Martone
Laurel McCrink
Barbara Jeanne Menard
Dr. Allen & Judy Moffson
Chuck Mol
George & Janice Muller

James M. & Josephine Myers
Ingrid Nielsen
Jeannie & Bruce Nordstrom
Phyllis Olefsky
Michelle & Orlin Oroschakoff
Jack Singer &
Sue Ann Owens-Singer
Ann & Charles Peabody
Charles & Marilyn Perrin
Shirley & Harold Pidgeon
Mahesh K. Podar
John & Patricia Queen
Mr. & Mrs. Erica Bee Ram
Margalit & Yossi Ram
Joe & Keren Ramsdell
Gino & Bingo Roncelli
Mason P. Rosenthal
Christine Rounsavell
Art & Ruby-Ann Rudnick
Manley & Linda Sarnowsky
Hon. H. Lee & Marjorie Sarokin
Sally Sutton Schulze
Steve Seaborg
Bill & Astrid Shannon
Donald Shepherd
Michael D. Singer & Sabina Wyss
Don Slate
Staubus-Dodge Family Fund @
Rancho Santa Fe Foundation
David & Heidi Straus
Dr. John & Carolyn Strauss
Dianne R. Sullivan
Lorraine Stamoulis Surnamer
James Sutorius
Stephanie & Alan Tarkington
Donna & Dr. Raymond Vance
Carol Vassiliadis
Kelly Welch
Judy White
Christopher M. Williams
Susan Winbigler
Beryl Young
Sandra & Peter Zarcades
Britt Zeller

Actor's Circle \$500+

Anonymous [4]
Diana L. Adam
Mickalee Altman
Joshua & Mia Anderson
Lyn Anderson
Scott Andreiko
Patrick & Julie Andrews
Alicia M. Annas
Loren Archer
Gisela Astl
Roberta Baade

Talisman Barbosa
Eva & Steven Barnes
Andrew Barnicle &
Sara Morrison Barnicle
Louise Barr
Alan & Nan Barth
Larry Bean
Stephen Beck-Von-Peccoz
Karen Begin & Rob Hutsel
Ed & Arlene Bender
Bill & Barbara Berrier
Margaret C. Bobertz
Andrea Bogardus
Gerald Bordin & Sheila Wosk
Dan & Judith Boyle
Roberta Brant
Barbara & Len Brazinsky
Mr. & Mrs. George Brody
Thomas & Barbara Brotherton
Dori Brown
Robert & Zane Bruck
Thomas Carr
Bill & Willi Caylor
Abbey Chamberlain
Nancy & Allan Chapman
Joy & Jack Charney
Maryellen Clark
David E. Closson
Connie M. Coe
Steven Cologne & Vicky Carlson
Joanne & Ken Conrad
Patricia Jean Cook
Mr. & Mrs. Marc Corwin
Linda & Dennis Costello
Hilary Crain
Candace Curlee
Dana & Rob Dahlbo
Mike & Pam Dalton
Elizabeth Savage Delpozo
Caroline S. DeMar
Charles Patricia Dintrone
Sidney Djanogly
Kathy & Bill Dougherty
Edith & Ed Drcar
Dr. Ruby Hinds Edman
Edward & Jacquelyn Eginton
Devora Safran & Ron Eisenberg
Ron Fauset
Richard Fogg
Dr. Ben & Sue Frishberg
Deanne Gage
Charlie Garrison
Peter & Christine Gault
Arthur & Maxine Geller
Dr. & Mrs. Gary Gentzkow
Joel & Judith Gerber

Mark Geyer & Athena Markou
 Jim & Marty Gigler
 Elizabeth Gilpin
 Morris & Phyllis Gold Fund of the
 Jewish Community Foundation
 Borgia & Pnina Goldberg
 Diane Gotkin & Richard Feinberg
 Charles A. Gough
 Matthew E. Graber
 Alfred & Betty Haboush
 Paul & Nancy Hackert
 D.L. Hadden
 Cristin Hagaman
 David & Susan Hagstrom
 Christy Hendrickson
 Jody Hennessy
 Verena Hommel
 James Hooker & Portia Metras
 John Jensen
 Cynthia Jones
 Gina Kakos
 Sue & Ara Kaloustian
 Ted & Trina Kaplan
 Kathi & Gregory Karen
 Richard & Beverly Kerns
 Judy & Duffy Keys
 Arthur P.C. King
 Sarah & Steve King
 Kim Kleber
 Marian S. Klein
 Dr. Marvin M. Kripps
 Monique Kunewalder
 Regina P. Kurtz
 Barbara Lange
 Anita & Peter Lanner
 Michael & Sherrie Laver
 Mimi Lee
 Arthur & Anni Lipper
 Eric & Suellen Lodge
 Laurence & Lucie Arnaz Luckinbill
 Johnny Mah
 Marcia Malkus
 David Marchesani
 Beverly Marcum
 Tom Markus
 Meisarosh Mazurkiewicz Family
 Karen McCracken
 Elgie & Mary McGrath
 Russ McLee
 Mary & Fred Meyers
 Diane Milberg
 Stanford & Marlyn Milberger
 Diana Miles
 Rena C. Monge
 Dr. Richard & Frances Moore
 Jan Mori

Janice A. & Tim Morris
 Charles & Susan Muha
 Sherrie & Glenn Napierskie
 Lawrence Newmark
 Thomas & Toni Nickell
 Margaret & Stephen Norton
 Teresa Ann Norton
 Pamela Nuccio
 Joann Onishi-Mogg
 Linda Oster
 Benita Page
 Ann & James Peter
 Greg & Kerstin Pfann
 Marc Poland
 Peter & Jane Polgar
 Judy Pressman
 Al & Donna Przechla
 Susie Rantzow
 Elmer & Lorraine Reich
 Steven D. Reich &
 Constance E. Gonczy
 Vivian Reznik & Andrew Ries
 Julianne Ricksecker
 Cheryl Rodzach
 Dr. Norman Charles Rosen
 James Royle, Jr.
 Oliver A. Ryder
 Bruce Schafer
 Gerry & Charles Scribner
 Stephen & Jill Seagren
 John & Pat Seiber
 Teresa Shaffer
 Scott & Mrs. Cathy Shaw
 Margaret C. Shea
 Drs. Lawrence & Miriam Sherman
 Bruce Shirer
 Stephanie R. Sides
 Rob Sidner
 Beverly Silldorf
 Marc Silver
 Jeanmarie Simpson
 Carol V. Smith
 Michael & Elizabeth Smith
 Carol Sorenson
 Anne Speraw
 Roger Thieme & Sylvia Steding
 Dana Stein
 Laurie & Greg Stelzer
 David & Jan Stormoen
 Maureen Talbot
 Dr. Robert & Camilla Tausworthe
 Eileen Tebbetts
 William & Marybeth Thayer
 Mort Tuchin & Marlene Zagon
 Janis Vanderford
 Karen Vanderwerken

Andrea Van Vranken
 Victor Van Lint
 Marianne Velasco
 Barbara C. & Kevin A. Ward
 Evelyn M. Weidner
 Michael & Sandi Weir
 Jeff & Esther Weisel
 Lee Edith Weiss
 Dr. Steve & Lynne Wheeler
 Clare White McDonald
 Judith White
 Jan Wier
 Stephanie Wilde
 Chris Wildes
 William & Sally Willis
 Dr. & Mrs. John & Dorothea Wilson
 Caryl Lees Witte
 Derek Wood
 Dorothy B. Wood
 Cindy Lee Yco
 Candace Young-Schult
 Cheryl & Richard Zales
 Allan & Helene Ziman Fund of the
 Jewish Community Foundation
 Hon. Dave & Brenda Zito

Star \$250+

Anonymous (3)
 Beth Levine & Henry Abarbanel
 Dr. Irene Abraham
 Lisbeth Abramson
 Sharon Rae Ackroyd
 Barbara Adams
 Susan Adams
 Jon & Sunny Allen-Romberg
 David & Annette Alpert
 John Andersen
 Colleen & Augusto Angelucci
 Richard Annesser
 Weston & Susan Anson
 Arleene Antin & Leonard Ozerkis
 Wally Augustin
 Regina Aulisio
 Ken Baker
 Ron Ball & Connie Smith Ball
 Christine A. Barnes
 Sharon Barnett
 Elizabeth Barnhart
 The Baum Family
 Trudi Beebe
 Frank Belock
 Virginia Beneke
 Alan & Toni Benner
 Mike Benton
 Bruce & Mary Berend
 Linda Bergen
 Al Berkowitz

SUPPORT AND GIFTS TO NORTH COAST REP

Elizabeth A. Bieger
Joyce Billings
Kenneth Bliss
Chuck & Shirley Block
Stephen & Wendy Blumberg
Todd Bohlman
Susan Boland
Paola Bonacina
Krista Bonaguidi
Catherine Marie Borgia
Maryann Bornmann-Yuhas
James & Marie Bradley
Dr. & Mrs. Gary Ronald Braslawsky
Richard Brockmeyer
Kathy & Bob Brombacher
Larry D. Brooks
Lucille Brown
James Buchanan
Todd & Debby Buchholz
Cristina Burtlem
Eleanor Burton
Nelson & Janice Byrne
Nancy & James Byrne
Frank & Nanette Caldararo
Raedel Calori
Gary Cantor
Jerome Carp
Carmella Carr
Millie Carr
Kathleen Carroll
Strega Cerbone-Colangelo
Dr. Kathy Jane Chambery
Nancy & Allan Chapman
Anita Charney
Sherwin Chasen
Kathy Chen
Hannah S. & Elliott Cohen-Edelstein
June Collins
Ramona Colwell
Michelle Conde
June Conner
Dr. Neil & Teresa Ross Cooper
Chris & Linda Khoury
Frank Corrado
Joan Costello
Sarah & Kirk Cowles
Jim & Laurene Crosby
Donna Cross
Frederick Cutler
Fay Dadbeh
Kathleen O. Dailey
Andrea Dee
Joan Deyoung
Vic & Mary Dhooge
Dr. & Mrs. Ellis Diamond
Rona Djeddhah

Esther Lynn Dobrin
Jeffrey Doerner
Valerie Dolan & Leon Covell III
Barbara Doren
Carol & Richard Doughty
Dick & Nancy Douville
Rose Marie Doyle
Silvia Dreyfuss
Mary Young Duarte
Eloise Duff
Douglas Dunn
Thomas Dunn
Myrna & Bill Eastwood
Elaine Eisenberg
Aileen Emer
Vera & Tom Emrick
Odette Engelberg
Martha Elin Erickson
Candice & Bob Fagan
Claudia Fainman
Patricia Fellows
Susan Fellows
John J. Fleck
Cynthia Fleri
Arnold & Cecile Forman
Laurie Beth Forrest
Betty Edwin Fox
Karen Freeman
James C. Friel
Dr. D. & Sunny Frowein
Kathy Furgerson
Karen & Kenneth Gallagher
Cheryl E. Gann
Joseph Garrie
Bill & Ann Gaw
Lynn M. Gaylord
Henry J. George
Patti Gethin
Virginia Ghoniem
Ben & Ann Giangiulio
Elaine A. Gifford
Carla Gilbert
Lee Gillard
Emilio Giraldez
Karen Glavin
The Carole & Howard Goldfeder
Fund @ Vanguard Charitable
Dale & Don Goldman
Mr. & Mrs. Sherrill Goldman
Mr. & Mrs. Bob Goldstein
Kenny Biblowitz & Michele Gorcey
Dr. & Mrs. Steve Gould
Amy Graham
Elizabeth Greenlee
Dr. Craig E. Griffin
Sharon Griggs
Robert & Ester Gross

Jay Grossman
Liz Gunzelman
Semra Gurol
Herb & Ellen Hafter
Janice Hall
Dr. Michael Haller
Julie Halliday
Marc Halpern & Heidi Dewar
June Hope Harland
Richard & Sharon Hatch
Jeffrey Hatcher & Kathy Endris
Thomas G. Hawkins
Paul Heim
Janice Heinzmann
Margaret Herbert
Fred & Joyce Hershenson
John Herzog
Dr. Thomas Herzog
Heidi & David Hodges
Jeannine T. Holt
Jack & Natalie Holtzman
Patty Howell
Brenda Hubbs
Tony & Judy Hugli
Lee Human
Edith R. Hunio
Dr. & Mrs. Bob Oscar Husa
Lisa Illianna-Jessup
Rod Innes & Marysa Andriola @
Schwab Charitable
Hilary Jacobson
Jocelyn Shannon & Jane Weiss
Julie Johns
Duane Johnson
Robert C. Jones
William A. Julian
Mr. & Mrs. Ronald Kardynski
Keith & Cheryl Kelley
Douglas P. Kempf
Kaaren Kerlin
Jon Kern
Arthur Olson & Shirley King
Kathleen J. Kleinfeld
Christopher Kohrs
Terance Kopanski
Carol & Harvey Korfin
Sharon R. Korn
Keith & Connie Kortman
Donald & Marilyn Kowal
John Krebs
Maren & Catherine
Kroger-Diamond
Kathryn Kubasak
Bernard Kuchta
Dr. Anne Kulidjian
Dianne Kutz
Sophie LaCasse



Dennis & Barbara Lambell
Peter & Judy Langhoff
Dr. Alan L. Lasnover
Dr. Joan Forrest & Dr. Michael Latz
Barbara Ute Launspach
James & Risa Rauth
Carolyn Lawson
Verjean Lawson
Susan E. Lerner
Debra Levin
Renee Levine
Philip Levinson
Ronald S. Levitt
Rita K. Levy
Betty Lewis
Carol Marie Lingenfelter
Hamilton M. Loeb, Jr.
Hanneke & Dick Logger
April Lopez
Nina & Michael Lorber
Jo & Sy Lotsoff
Denruth Lougeay
Robin Luby
Steve MacBaisey
Margaret Mandac
Abraham F. Mara
Mary Ann Marcuzzi
Maureen Markey
Mark & Susan Edelstein
Jerry & Marlene G. Markus
Nancy Martin
Peggy Ann Martin
Beth Mascherin
Gloria D. MC Coll Powell
Thomas McGreal
Robert & Jan McMillan
Ira Meislik
Harold Mensch
Scott & Beth Mercer
Marlan Merhab
Kenneth & Shelah Michael
Mike & Marge Michaelson
Elizabeth R. Weinberg &
Dr. Mikel D. Weinberg
Jean Milam
Hans & Merrole Millenaar
Linda M. Miller
Van Miller
Nancy & Isaac Mizrahi
Margaret Munoz
Nancy Anderson
Kelly Neagu
Helen P. Neal
Suzanne Neeb
James & Kathalyn Nelson
Robert & Michele Nelson
Arthur & Marilyn Neumann

Tom & Pat Nickols
Harold Noll
Karin Norberg
Abigail & John Odam
Marilyn O' Hair
Al & Barbara Ollivares
Heather M. Oonk
Dale Ordas
Elizabeth Ortlieb
Donna Page
Robert D. Paluzzi
Frank & Marti Panarisi
Steve & Carole Papadopoulos
Billy Parks
Isolde Parrey
Ed & Carolyn Parrish
Dr. A. Sandy Parsons
Cathy Paulsen
Dottie Pechek
Clarice Perkins
Gerda M. Petersen
BJ Peterson
Ila Piel
Kim Plunkett
Joyce Poe
Nancy & Bob Porter
Jay Powers
Tom & Janice Powers
Arvind Prabhakar
Ecco W. Price
Glen Pritzker
Chuck Pryatel
Nicholas Rampino
Gerry Raynes
Barbara Jane Redlitz
Dr. Regina Reinhardt
Keith & Elsa Rickard
Laura & Patrick Riley
Betty Ritter
Stuart & Linda Robinson
Eduardo & Teri Rodriguez
Kathleen Rooney
Jonathan Roper
Sharon & Steven Rose
Sonia & Lee Rosenberg
Roy & Joan Rosenwald
Sally Rothfus
Irwin Rubenstein
Rob Rubin
Arnold & Janet Ruskin
Michael Russell
Howard & Leslie Sachs
Mary Salvato
Theresa Sample
Thomas Joseph Scardina
Laura Schaefer

Gretchen Schafer
Sandra Schafer
Jane & Stan Schatt
Stephen Schechner
Laina Schechtman
Richard & Adrienne Schere
Donald L. & Emily B. Schneider
Mr. & Mrs. Thomas Schneider
Ileese & Gary Schneir
Steve & Miki Schorr
David Schuss
Edward Schutz
Rochelle Schwartz
Ted Schwend
Nadine Scott
Zachary Seech
George Wayne Seidel
Esther P. Sery
Shari Severson
Enid & Mark Sherman
John L. Sherman
Pam Shetler
Elissa Shuchter
Dr. Dee Silver
Anita Simons
Howard Singer
Cathie A. Skinner
Claire Slattery
Jack Smith
Marshall Smith
Mary Jean Smith
Carol & John Snow
Nancy Snyder
Lawrence & Evelyn Solomon
Randall Souviney
Ann Spector
Dr. Lisa Spiegel
Jim & Joyce Spievak
Melanie A. Starr
Mr. & Mrs. Cindy Steiner
James & Deanna Stephens
Marguerite L. Stewart
Jill Stone Fund of the JCF
Gwen Stoughton
Peter Stovin
Susan Styn
John & Catherine Swan
Lisa T. Sweet
Doug & Mary Swenson
Ross & Katherine Tanner
Willard Taylor
Rochelle Terry
Margaret C. Tessier
Mr. & Mrs. Charles William Thomas
Deborah L. Thomas
Ellen Thomas Memorial Fund at
Coastal Community Foundation

SUPPORT AND GIFTS TO NORTH COAST REP

Anne Thompson-Welch
Linda & K.C Thompson
Richard Ticho
Joyce Timperley
Dr. Christian Tomaszewski &
Susan Bodtke

Eva Trieger
Richard & Denise Tverdoch
Richard & Susan Ulevitch
Scott & Kaylin Union
Hitomi Usher
Sandra Vail
Jilaine & Louis J. Valerio
Holly Vanderpool
Meera & Mandyam C. Venkatesh
Sharon Verlodt

Helen Vexler
Dr. Vinton C. Vint
Merle & Susan Vogel
Linda Volz

Mary Vonderreith
Celia Wakefield
Alice Walker
Amy Walling
Dr. Ken D. Ware
Bobbi Warren
Laurel Wasserman
Ken & Linda Wasserman
Phyllis Weed
Margaret & Charles Weigand
Nancy Cetel & Joseph Weiss
Philip Jeffrey Weiss
Annemarie Whalen

Louise White
Mary A. Whittier
Roland & Loreen Wilhelmy

Robert Wilkinson
Barbara Williams
Sally Williams
Donald E. Willis
Arden Winokur
Valerie Withrow
Dr. David Ira Wolf
Marcia & Donald Wolochow
Tom Woodbury
Betty & Milton Woolf
Mark Xitco
Lynn Yahr

Nancy Yates
Janet A. Yaws
Art & Sandra Yayanos
John Yeager
Daphna & Gad Zeilingold
Charlie Zieky
Marina Zielinski
Hermann & Trude Zillgens

Joe & Linda Zuieback
Drs. Ellen & Jack Zyroff

Cameo \$100+

Anonymous (4)
Marjorie L. Abrams
Eileen M. Ackerman
Judith Adler
Nancy & Dr. Stephen Albert
Lynn Allison
Rhonda Amber
Jon & Dee Ammon
Allan & Brenda Anderson
Karen Anderson & Roman Zajcew
William & Joanne Anderson
Lisa Appelgate
Stephen Awe
Joyce Axelrod
Kirby & Glenda H. Baker
Edward D. Ball
Barbara Lucille Barnett
Veronica Barraza
Thomas & Laura Basacchi
Arthur & Darlene Bauer
Donna Beck
Phylaine Bemel
Kenneth & Marie Bertossi
Jutta Biggins
Nicholas & Samantha Binkley
Cynthia & Arthur Birnbaum
Irene Biro
Paul Bishop
Gerry Black
Amy Blount
Gwendolyn Boatright
Catherine Bowen
Linda Boyd
Ronald J. Brahms
Michele Brenner
Pamela Brittain
Paul Brocchini & Priscilla Franklin
Jeff Broido
Susan & Stephen Brown
Thomas A. Brown
Liz Mullarkey & Rob Bryson
Betsy A. Buckner
David & Karen Burnett
Michael Burnett
Dolores Burns
Betty Byrd
Julie Ann & Richard Callis
Joyce Calvin
Jack A. & Frances Caminer
Rose Campbell
Robert Thomas Cannon
The Estate of Jean Cantwell
Anthony Carr

Carol Dickinson Carr
Brian Carter
Lilian Cereghini
Lois & Robert Chaddock
Beatrice Chance
Ted L. Childers
Dr. Jodie Chin
Dr. Thomas D. Chung
Anne Clifford
Barbara H. Cohen
Leah Cohen
Phyllis Cohn
Patrick Cole
Linda F. Collier
Joe & Ramona Colwell
Allan & Kelly Connell
Lynn M. & Will Cooper
Garey Cooper & Maxine Toby Cooper
Jan Corash & Michael Berdan
Diane Culp
Nancy Cunningham
Kate & Tom Dalton
Cynthia Darlington
Clarence T. Daub Jr
Alice Davis
Florence D. Davis
Jeanette Day Charitable Fund @
Schwab Charitable
Luccette Dean
Deborah Vietor
Michelle Defrancesco
Janice Degraw
Nancy Denton
Marguerite Jackson Dill
Jim Dillard
Laura & Rich Dipietro
Dr. Carolyn B. Dizney
Kimberley Dorey
Terry E. Douglass
Jeanine Dreifuss
Marilyn Dunn
Heather Duze
Bill Eadie
Louise B. Edwards
Robert Eng
Lynda Engle
Susan Eubanks
Eunice Dossantos
Gail Eyler
Elisa Ezor
Joseph Faletti
Rosann Feldman
Drucilla Field
Barbara Fishbein
Anne Fitzgerald
Anne Fletcher
Judith Fogel



L. Michael & Pamela Foley

Emery Foote

Rhoda Forrest

Ken & Jane Foster

Steve Elliot Foster

Maggie Fowlie

Marion F. Fox

Barry & Mary Francke

Terre Frank

Carole Franks

Margie Frazee

Scott Freeman

William Eugene Friedel

Nancy Lee J. Friedlander

Isabelle Friedlieb

Phyllis Friedman

Gary & Lynn Frye

Loren D. Gardner

Dr. Margaret Joan Gavillet

Terry & Anita Gee

Ellen Geer

Holiday Geiger

Carol Gendel

Beverly Gilfillan

Patricia & Norman Gillespie

Martha Gish

Joanna McClelland Glass

Kim Godwin

Sheila Goldfarb

Louis Goldich

Rafael & Barbara Goldstein

Robert Googins

Joan Goott

Gayle & Dwight Gordon

June Gottlieb

Marlene Gotz

Diana Greg

Barb Grice

Barbara Griffin

Gregory Gross

Dr. & Mrs. Richard C. Gross

Diana Grove

Michael Guinan

James Hackett

Kathy Hagenbach

Diana Hahn

Paula Halprin

Dr. William & Ann Marie Haney

Jim & Pat Hansen

Judith Harper

Andrea Harris

Bebe Harris

Diane N. & John A. Harris

Drs. Jim & Katie Harte

Bill & Elaine Hartleb

Elizabeth Harvey

Mary Harvey

Caroline Hathaway

Jim Healy

Robert S. Heighton

Jeanne Hesse

Catherine J. Hestilow

Dennis & Barbara Higginbottom

Carol Higgins

Gisela Hill

Dr. Judi Hora

Richard Horne

Pamela & William Howe

Monika Hseu

Joan Husen

Diane Ivy

Ella Jarf

Jerry & Patricia Jerome

Dr. Klaasje R. Johnson

Dave Jones

Jennifer Jones

Joe Juliano

Bernard Kalscheuer & Ellen Covairt

Carol Kane

Linda Kass

Kenneth D. Kebow

Anne Kellogg-Sharp

Morgan King

Terry King

William & Susanne King

Miriam L. Kirschner

Carol Kissin

Cindy Klong

Lowell & Pam Klosky

Leean Knetzer

Lynn Arlene Knize

James & Doris Knotter

Karen Knudson

Patricia Koob

Phyllis Kopp

Revella S. Korman

Theodora Kostka

Elizabeth Kruidenier

Jean Kuisel

Myra J. Kurz

Pam Kurz

Frances & Jack Kyte

Dr. Andrea Lacroix

Joanne La Gow

Patricia C. Lamont

Debra & Jim Lampley

Sharon Lane

Lisa Langhoff

Iris Lapidus

James A. Larrimore

Diane Laub

Shirley Layton

Veronica Lee

Bonnie Lennon

Dan & Judith Leshner

Julia Let

Sandra Levin

Geraldine Levine

Natasha Levitt

Neil M. Lewow

Evelyn Lipson Radom &

Dr. Sanford Radom

Paula Liska

Sandra Louise Long

Sergio & Hilda Loza

Marsha Lubick

Tom & Christine Lucas

Jacqueline Lucas

Jeff Lyle

Gary & Diana Macek

Martha MacKenzie

Robert Grand & Marilyn Riley

Wilma Marr

Noriko Marshik

Dick & Barbara Martin

Leslie Martin

Linda Mason

James Mastrogany

Carol Mathews

Marjory Mattly

Doris Mattox

Valentina May

Joan C. McAfee

Marguerite McBride

Patricia Mary McCabe

Gloria McCaffrey

Debra A. McCain

Tort McCarter

Denver McCune

Susan McEachern

Lory B. McGregor

Mary Anne McKiechan

Tonita K. McKone

Joanne McNamara

Cdr. Casey Katherine Meehan

Roslyn Meyer

Shabnam Miglani

Jennifer Miller

Victoria Mohutsky

Karen Montag

Charles Morris

Caroline Morse

Bill Pultz & Maureen Moss

Jeffrey Moss

Rudolf Muller

Amy Murad

Kate Murashige & Chris Zones

Carol Netzel

Dorothy Neville

SUPPORT AND GIFTS TO NORTH COAST REP

Deidre & Skip Newton
Marianne Nicholson
Nahid Nikzad
Doris Nissinoff
Brenda H. Nouskajian
Reba Oberman
Kathy Oldham
Timothy O'Neill
Marj Osgood
Christine Jura Oster
Julie Overton
Dr. Wayne Padover
Lorna & John J. Parks
Julia E. Parry
Dr. Harold Payne
Susan Peck
Linda Pequegnat
Susan Jane Peters
Yelena Petrova
Joann Phillips
Mr. and Mrs. Michael Shannon
Barbara Ann Poole
Margaret Pope
Kaye Preston
William & Diana Price
Robert & Merle Propp
Merlin & Margaret Puck
Barbara & Christopher Puntis
William Purves
Susan L. Quinn
Barbara Rita Rabiner
Dolores Rapoport
Doris & Steven Ratoff
Linda Rattray
Julie Teel Regan
Staci Reidinger
Joanne Reno
Sharron L. Resnick
Dr. Robert & Lauren Resnik
Connie & David Rittichier
Cal Robinson
Pamela Rockwell
Marian L. Rogers
Diane Roland
Dulcie & Norman Rosenfeld
Nicole Cott Ross
Alice Ross Gordon
Amy Roth
Mary Rountree

Nina Sabban
Diane Sadowski
Stella Saling
Carol Salvati
Richard Sarif
Freddie Sarno
Ray Sarno
Sue Ann Schaffner
Al & Ann Schlegel
Charles Schmitt
Dr. Alan Schneider
Marcia Schofield
Charles F. Scholl, Jr.
Dominick Scigliano
Pamela Parker & Michael D. Scott
Marilyn Seals Monell
Joan Sealy
Cynthia Seeberg
Salim & Francoise Shah
Jerry Sharrin
Elena Shekhter
Lynette Shires
Laurel Shupp
Dr. Ed Siegel
Steve Siemers
Monty Silverstone
Rick Simas
Jane Sinclair
Charles & Beatrice Sklarewitz
Karyl Skrukud-Adams
Catherine P. Smart
Barbara J. Smith
Cathy Smith
Joseph Smith
Nancy Snow
Carla Solomon
Keith Spears & Leslie Martin
Ellen Spencer
Alan & Eve Mary Stall
Patricia S. Stein
Mark Stenson
Marilyn Stenvall
Dr. Michele Stewart
Ruth Strauss
Carol Streeter
Mark Strickland
Maryanne Stroud
Kathy Strull
John Sullivan

William & Barbara Summer
Sandra Lee Sweet
Trudy Synodis
Kathie Szustecki
Arlene Tashlick
Nancy J. Taylor
Jon Tedesco
Phoebe S. Telser
Barbara Thomas
Kristin Thomas
John & Susan Thompson
Jennifer Tillman
Norma Totoritis
Helga Trachinger
Dr. & Mrs. Cal Treger
Carolyn Triebel
Joe & Terrell Tyra
Dr. Vernon Doyle Ummel
Virginia L. Unanue
Thomas Uter
Rob & Carolyn Veuger
Sabina & Jim Vincze
Pat Vollman
Michael Vopatek
Dolores J. Wall
Wendy Wang
Ward Family Charitable Fund
Pat & Chris Weil
Sandra Weinstein
Judy Weiss
Barbara Wheeler
Diane White
Kathleen Whitworth
Joy Wiker
Isabella Wilf
Lenore Wilkas
Beverly S. Willey
Mitch & Linda Williams
Barbara Wilmot
Abe Wilson
Jeanne Burnett Wingender
Jacqueline Wiseman
Mark Wisniewski
Dennie & Jeannine M. Wittmayer
Nathan Wolfstein
Dawn Marion Yocom
Maxine Young
Pam Zimbalist
Katrina Zynda

Thank You

If you are interested in seeing how you can play a greater leading role at North Coast Repertory Theatre, please contact Denise Young at denise@northcoastrep.org or 858-481-2155 x210 to set up an appointment. For individual, foundations, and corporate sponsors, please visit our website: northcoastrep.org

NORTH COAST REP

PRESIDENT'S ADVISORY COUNCIL

Lucie Arnaz
Kenneth Baca
Richard Dreyfuss

Kathleen Bell Flynn
Steve Flynn
Leonard Hirsch
Dr. Allen Moffson

Dave Roberts
Jay Sarno
Julie Sarno

FOUNDERS

Tom and Olive Blakistone

CORPORATE, FOUNDATION AND GOVERNMENT SUPPORT

Please join us in thanking the following businesses and government agencies for their support.
All donations listed from November 1, 2020 to November 30, 2021.

President's Circle \$25,000+

The Conrad Prebys Foundation
The County Of San Diego at the recommendation
of Supervisor Terra Lawson-Remer
The Dempster-Larsen Fund of The Parker
Foundation
KPBS
Mandell Weiss Charitable Trust
U.S. Small Business Association
The San Diego Foundation

Producer's Circle \$10,000+

American Assets Trust
California Arts Council
The Sheri and Les Biller Family Foundation
Mandell Weiss Charitable Trust
Las Patronas
The Shubert Foundation
US BANK

Playwright's Circle \$5,000+

Antique & Estate Jewelry
City of Carlsbad
City of Solana Beach
Leichtag Foundation
Nordson Foundation
Pacific ENT Medical Group
QUALCOMM, Inc.

Director's Circle \$2,500+

The Jewish Community Foundation
NEBCAL Printing

Designer's Circle \$1,000+

Apple
Craftsman Revival
The Full Circle Fund @ The Coastal Community
Foundation
Garrison Insurance
Gay & Lesbian Fund for San Diego @ the San
Diego Foundation
Gonda Arts and Entertainment Foundation
IBM
Morgan Stanley

Actor's Circle \$500+

California Bank & Trust
The Girard Foundation at the recommendation of
Deidre Alpert
Hewlett-Packard
The Mailing Group, Inc.
Office 1
Rancho Valencia Resort & Spa

SPECIAL THANKS TO

Amazon Smile
Aristophanes
Elisa Benzoni
BijouRocks by Reine Krief
Chevron
Marion Dodson
Barron Henzel
Rhonda And Greg Houck

BijouRocks by Reine Krief
Coomber Family Wines
Dana Stein Everyday Furs
Del Mar Solana Beach Rotary
Neville Engelbrecht
Manscaped
Frederick Marks
Hair by Charmaine Matic

Charlotte Perry
Holly Smith Jones
Suzan's Silver & Boutique
Dr. Squatch
Noelle Styles Salon
Type and Graphics
Your Cause

For information, contact Denise Young at denise@northcoastrep.org or 858-481-2155 x210.

Season 40

NORTH COAST REPERTORY THEATRE | 2021-2022



BECOME A SUBSCRIBER! Buy 4 shows for the price of 3 with our 4-play subscription package!

If you already bought tickets for THE HOMECOMING, we will apply the cost of the tickets to your subscription.

NORTHCOASTREP.ORG GROUP SALES: (858) 481-2155, X202
987 Lomas Santa Fe Dr., Suite D, Solana Beach, CA