

Lighting Design
NATHAN PEIRSON

Set & Properties Design
MICHAEL MCKEON

Costume Design
JEANNE BARNES REITH

Sound Design
DEBORAH GILMOUR SMYTH

Stage Manager
CYNTHIA GERBER

PRODUCTION STAFF
Director of Production **Nathan Peirson**
Production Stage Manager **Maria Mangiavellano**
Technical Director **Brendan Farley**
Audio Master **Patrick Duffy**
Scenic Shop Foreman **Joshua Longfellow**
Technicians **Steve Longfellow, Nate Suslovic**

Master Electrician **Michelle Miles**
Costume Shop
Assistant Designer **Jemima Dutra**
Wardrobe Supervisor **Virginia Longfellow**
Hair **Susie Fergusson, Legends Salon**
Patron Services Director

Deborah Gilmour Smyth
Box Office Manager **Susan Campbell**
Usher Coordinator, Coronado

Caitie Grady
Patron Services Staff
Jesse Abcel, Melissa Allen, Megan Buff,
Dan Caldwell, Kathleen Calvin
Karen Ann Daniels, Sherry Evans,
Cynthia Gerber, Caitie Grady,
Amanda Graham, April Henry,
Lauren King, Sydney Longfellow,
Emilie MacDonald, Elise McClellan,
Matt Meads, Josias Osias,
Cashae Overton, Brenna Peirson,
Amanda Salmoms, Jennifer Sears

Rachael Van Wormer
VOLUNTEER SUPPORT
Nancy Helsper & SRO, John Pauter,
Shirley Ellen, The Thursday Club

Robert Smyth
Producing Artistic Director
Kerry Meads
Associate Artistic Director
Deborah Gilmour Smyth
Associate Artistic Director

LAMB'S PLAYERS THEATRE

DAMIEN

by Aldyth Morris

Directed by **Deborah Gilmour Smyth**

ROBERT SMYTH AS DAMIEN DE VEUSTER

INTRODUCTION BY
CYNTHIA GERBER

There will be a 15 minute Intermission
Refreshments available in the lobby and ENCORE! cafe



Background music in Damien

Traditional Chants and Nose Flute.

*Why do Hawaiians play flute through their nose?
Because the mouth can lie.*

Bad words and angry statements can come from one's mouth. They believe air from the nose is the most pure form of air. Therefore, nose flute music is the "purest" music one can play. Additionally, Hawaiians believe that when God breathed life into man, it was from the nostrils, making it the purest, most godly air.

Ancient Hawaiians played the nose flute in chants, dances including hula, and for courtship purposes wherein lovers would signal to each other through song.

Post TalkBack walk out music: Robert Plant & the Band of Joy

PROFILES



Robert Smyth (*Damien de Veuster*) is the Producing Artistic Director of Lamb's Players Theatre. Moving to San Diego from the East Coast in 1976, he joined the staff of Lamb's Players (at the time a touring performing arts company based in El Cajon) with a vision to build a professional resident repertory company. Lamb's Players opened its first resident theatre in National City in the spring of 1978. In 1994, the company moved its resident stage to Coronado. The company's mission is "to tell good stories well." As Artistic Director and CEO, Smyth's hats include that of administrator, director, actor, and occasional playwright. He has directed over 100 productions, including many world and regional premieres. He has also toured internationally with this one-man performance of *Damien*. He and his wife, actress/director Deborah Gilmour Smyth, recently received a joint "lifetime achievement" Patté Award.



Deborah Gilmour Smyth (*Director, Sound Design*) is an Associate Artistic Director at Lamb's and an actor, director, and composer. She has performed in, directed, sound designed, or choreographed over 180 productions at Lamb's Players Theatre. Lamb's performance credits include: *The Light in the Piazza, The Glass Menagerie, My Fair Lady, The Taming of the Shrew, Joyful Noise* (here and Off-Broadway), *Edith Stein, Talley's Folly, Private Lives, Into The Woods, Boomers* and *The Secret Garden*. At Starlight: *Mother in Ragtime*. At Cygnet: *Mrs. Lovett in Sweeney Todd*. Directing credits at LPT include: *Art, Steel Magnolias, Sleuth, Life X 3, Ring Round The Moon, 1776, The Winslow Boy, Cyrano, The Rivalry* and *Brownie Points*. Sound design and original music credits include: *Metamorphoses, Edith Stein, Flight, The Hunchback of Notre Dame, The Great Divorce, Till We Have Faces, Dracula* and *Hamlet*.



Nathan Peirson (*Lighting Designer, Director of Production*) a graduate of Biola University, is Lamb's Director of Production. He has designed lights for many productions including *The Book of the Dun Cow, The Light in the Piazza, The Secret Garden, Enchanted April, Joseph and the Amazing Technicolor Dreamcoat, Life X 3, Metamorphoses, The Hunchback of Notre Dame, Boomers, Till We Have Faces, The Great Divorce* and *Dracula*. He is also a busy actor, photographer and musician. As a performer Nate has been seen in such productions as *Tintypes, The Wind In The Willows, Alice In Concert, Festival of Christmas*, and *An American Christmas*.



Michael McKeon (*Scenic Design*) is an avid Photographer, Videographer, Painter, Sculptor and "maker of things." Since 2008, Michael has had the honor to work with Lamb's as a Craft Master, Scenic Designer, Scenic Artist, Properties Designer, Multimedia/Video Designer and Technician, Stage Manager and Front of House Associate for various shows and special events at LPT. Other scenic design credits include: *Killer Joe - San Diego Theater Critics Circle Award (Compass), Side Man (Diversionary), A Midsummer Night's Dream* (Intrepid Shakespeare Company)



Jeanne Barnes Reith (*Costume Designer*) Damien marks Jeanne's 134th production in 22 years as an Associate Artist & Resident Designer at Lamb's. Jeanne's creative work has achieved Theatre Critics Awards such as the Craig Noel, KPBS Patte, and Billie Awards, the most recent being a Craig Noel for *Servant of Two Masters*. Other award-winners: *An Ideal Husband, A Woman of No Importance, Till We Have Faces, The Boy Who Fell Into a Book, Joyful Noise, Tarantara! Tarantara!, Dr. Faustus*,

The Winslow Boy, and *Metamorphoses*. In 2008 Jeanne was presented a Patte Award for her entire season of productions including *Hello, Dolly!*, *The Voyage Inheritance*, *The Hit*, *Boomers*, *The Light in the Piazza*, *Festival of Christmas: Angel's Arms* and *An American Christmas*. "Theatre is a collaborative art. The team wins awards." -Jeanne Reith



Cynthia Gerber (*Stage Manager*) was a member of LPT's Resident Ensemble from 1988 to 2001 and is now an Associate Artist. Most recently she was seen at LAMB'S in *See How They Run* and *Brownie Points*. Favorite productions at LPT include *Harvey*, *The Hit*, *Susan and God*, *The Miracle Worker*, *Flight*, *Steel Magnolias*, *Quilters*, *Busman's Honeymoon*, *Detective Story*. See *How They Run*, *Amadeus*, *Dracula*, *To Kill A Mockingbird*, and *Ring Round The Moon*. Cynthia studied at The American Academy of Dramatic Arts. She is also enjoying her role as Cannon and Spencer's mom.

Aldyth Morris—Playwright

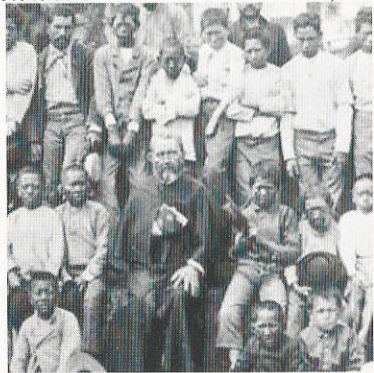
Aldyth Morris, author of the play DAMIEN, was the managing editor of the University of Hawaii Press for many years. She was living in Honolulu, Hawaii when Father Damien's body was exhumed from the Leper Settlement, Kalaupapa on the Island of Molokai and brought back to the Priest's native Belgium. She is the author of eight full-length plays. Four, (including DAMIEN) tell the stories of people who had important influences on the history of Hawaii: Captain James Cook, who on his second voyage around the globe brought the Hawaiian Islands to the attention of the world. Novelist, Robert Louis Stevenson, who lived in Hawaii for a time on his worldwide search for health, visited the Leper Settlement, and wrote his famous "Damien Letter." Lili'uokalani, the last queen of Hawaii, who's overthrow led to the annexation of Hawaii by the United States. Morris died in 1997 at the age of 95.

Hansen's Disease

Hansen's Disease, as Leprosy is now properly called, is caused by two strains of the Mycobacterium bacteria (leprae and lepromatosis) The disease, known since ancient times, causes progressive nerve damage leading to skin sores, muscle weakness, and loss of feeling.

Today, Hansen's disease can be fully arrested with antibiotics. It is not highly transmissible, is very treatable, and, with early diagnosis and treatment, is not disabling. Patients become noninfectious after taking just a few doses of medication.

Left untreated, the disease is progressive, causing permanent damage to the skin, nerves, limbs and eyes. Contrary to folklore, leprosy does not cause body parts to fall off. However, the nerve damage results in a high level of secondary infections and these in turn cause tissue loss causing fingers and toes to become shortened and deformed, and cartilage to be absorbed into the body.



Father Damien with men and youth from the village on Molokai, 1880.

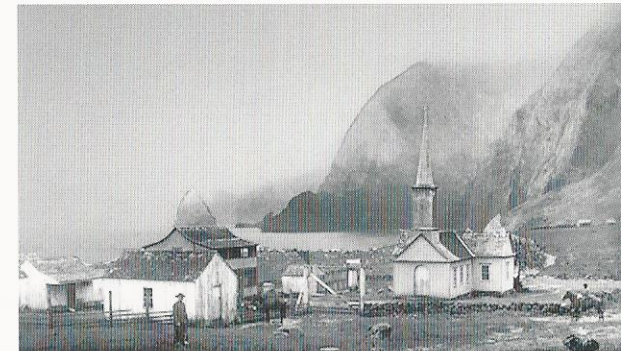
Because of its long history, 95% of humans have a natural immunity to the disease. Native Hawaiians, however, had no such protection.

Hansen's Disease remains common in many countries worldwide, especially in temperate, tropical, and subtropical climates. Numbers of those affected have been increasing in recent years due to drug-resistant strains of the bacteria, and the growth in global immigration and the numbers of refugees.

About 150 to 200 new cases are diagnosed in the United States each year. Most are in California, Louisiana, Florida and Hawaii. There is a Hansen's Disease outpatient facility in San Diego. For more information: <http://www.hrsa.gov/hansensdisease>

MOLOKA'I The Kalaupapa Settlement

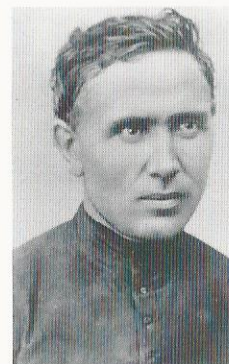
2,200 miles southwest of California, in the center of the Hawaiian islands, is the island of Molokai. On the north shore is the nearly flat, ten-square-mile



Makanalua Peninsula that juts into the Pacific below the world's highest sea cliffs, and home to the Kalaupapa Settlement.

Once home of the leper colony cared for by Father Damien, the Kalaupapa Settlement is now a National Historic Landmark and part of the Kalaupapa National Historical Park. Its goal is to preserve the cultural and physical settings of the leper colony on the island.

While Kalaupapa is now a National Historic Site, it is also the home of the few former patients who chose to remain there. Access, is by law, highly regulated. Guests must either be invited by one of the residents or take the tour offered by Damien Tours of Kalaupapa.



Kalaupapa website:

<http://www.nps.gov/kala/index.htm>



Top, the settlement when it first was constructed. Left, Damien at 33 before leaving for Molokai and later on in his life. Bottom, the Kalaupapa Settlement beneath the world's highest sea cliffs.

