

Costume Design
JEANNE BARNES REITH ■

Set Design
MIKE BUCKLEY ●

Lighting Design
NATHAN PEIRSON ■

Properties Design
Scenic Art & Lobby Display

MICHAEL MCKEON ■

Sound Design
PATRICK DUFFY ■

Production Stage Manager
MARIA MANGIAVELLANO ■ ▲

PRODUCTION STAFF

Director of Production **Nathan Peirson**
Technical Director **Brendan Farley**
Scenic Shop Foreman **Joshua Longfellow**
Technicians **Steve Longfellow, Nate Suslovic**
Master Electrician **Michelle Miles**
Audio Masters **Patrick Duffy, George Wheeler**
Assistant Choreographer **Kyrsten Hafso**
Assistant Stage Manager **Brenna Peirson**
COSTUME SHOP
Assistant Designer, Head Patternmaker
Jemima Dutra
Wardrobe Supervisor, Crafts **Virginia Longfellow**
Cutter, Stitcher **Juliet Czoka**,
Wigs, and Hair Piece Design **Jacinda Fischer**,
Stitcher **Jo Clare Longfellow**
Wig Design **Coni Brugman**
Patron Services Director
& Usher Coordinator for The Horton Grand
Deborah Gilmour Smyth
Box Office Manager **Susan Campbell**
Encore! Assistant Manager **Kathleen Calvin**
Usher Coordinator, Coronado
Caitie Grady
Patron Services Staff
Jesse Abeel, Melissa Allen, Vittoria Allen
Megan Buff, Dan Caldwell, Kathleen Calvin
Karen Ann Daniels, Sherry Evans, Cynthia Gerber,
Caitie Grady, Amanda Graham, April Henry, Luke
Harvey Jacobs, Lauren King, Sydney Longfellow, Emi-
lie MacDonald, Elise McClellan, Matt Meads, Josias
Osias, Amanda Salmons, Jennifer Sears,
Rachael Van Wormer
The LPT Strike Crew, Nancy Helsper & SRO, John
Pauter, Shirley Ellen, The Thursday Club

Robert Smyth
Producing Artistic Director
Kerry Meads
Associate Artistic Director
Deborah Gilmour Smyth
Associate Artistic Director

LAMB'S PLAYERS THEATRE

Pete 'n' Keely

by James Hindman
with Musical Arrangements and Additional Music
by Patrick Brady
Directed by Kerry Meads ■
Musical Director/ Assistant Director **Jon Lorenz** ■
Choreographer **Colleen Kollar Smith** ●

ENSEMBLE

KEELY **EILEEN BOWMAN** ● ▲
PETE **PHIL JOHNSON** ● ▲
DEL/KEYBOARDS **BRENT SCHINDELE** ● ▲
MERYL **COURTNEY FERO** ●
CAROL **KYRSTEN HAFSO**
MARTY **PATRICK DUFFY** ■

THE BAND **TOM VERSEN** ● PERCUSSION
HARLEY MAGSINO, BASS
LEONARD SUNDELSON,
REEDS/FLUTE

SETTING

A SUNDAY EVENING, 9:00 PM AT
THE NBC STUDIOS IN 1968

There will be a 15 minute Intermission
Refreshments sold in the lobby and **ENCORE!** cafe

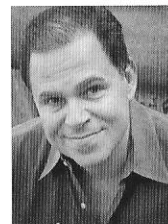
Understudy, **John Rosen** ● ▲

■ Lamb's Players Staff Member ● Lamb's Players Associate Artist
▲ Member Actors' Equity Association
Produced by Special Arrangement with Samuel French
January 18 - March 3, 2013

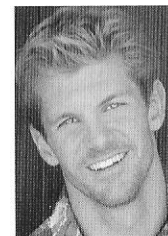
PROFILES



Eileen Bowman (Keely) was onstage at Lamb's last Season as Adelaide in *Guys and Dolls*, and Dee Dee/Patricia/Angela in *Joe vs The Volcano*. She is a native San Diegoan and has been seen on stages in Las Vegas, Lake Tahoe and even Japan but she loves to be here in her home town. Theatre-goers may have seen her as Agnes Gooch in *Mame* at San Diego Lyric Opera, Miss Rona in *Spelling Bee* at the North Coast Rep, Eliza Doolittle in *My Fair Lady* and Lina Lamont in *Singing in the Rain* both at Starlight Musical Theatre just to name a few. She played Grandma Who for 13 years in the The Old Globe's *How the Grinch Stole Christmas* directed by Tony award-winning director Jack O'Brien. Eileen spends lots of time in Los Angeles doing commercials and television. She dedicates her performance to her sweet perfect husband of 18 years and to her wonderful family, to Mommy and Daddy I love you!!!!!! God is so good!! Eileen is so happy to be here in *Pete 'n' Keely* with her favorite sandbox playmate, Phil Johnson.



Phil Johnson (Pete) has appeared on Broadway in *Les Misérables* and in the National Tours of *Sunset Boulevard* and *Miss Saigon*. His San Diego credits include *American Rhythm* (Lamb's Players); *Mistakes Were Made*, *Little Shop of Horrors* (Cygnet Theatre Company); *The Man Who Came to Dinner* (Coronado Playhouse); *The 25th Annual Putnam County Spelling Bee*, *Don't Dress for Dinner*, *Leading Ladies* and *Pageant* (North Coast Repertory Theatre); *How the Grinch Stole Christmas!* (The Old Globe); *The Mousetrap*, *Moonlight!* Avo Playhouse; *The New Century* (Diversions Theatre); *A Christmas Carol* (San Diego Repertory Theatre), *Forever Plaid* (Theatre in Old Town), *True West* (Sledgehammer Theatre). Original comedies include a one-man *Hound of the Baskervilles* (San Diego Foundation Artist Grantee), *Nemesis* with Mike Sears, *Say Cheese* (San Diego, Los Angeles and Chicago) and *Casa del Ha Ha*, an original sketch show. Television credits include "Notes from the Underbelly" (ABC), and he is a member of Acme Comedy Theatre, L.A. www.philjohnson.net



Brent Schindele (Del, keyboards/ band leader) is pleased to return to Lamb's after playing Sky Masterson in *Guys & Dolls* last season. Brent graduated from Dartmouth, trained in New York and got his start as Tony in the national touring production of *West Side Story*. He played Peter, Simon the Zealot and keyboards in the orchestra for the Broadway

tour of *Jesus Christ Superstar*, helped create the leading-man parodies for the Off-Broadway hit *The Musical of Musicals: The Musical!*, and recently starred as Johnny Blue in the world premiere of *South Street* at the Pasadena Playhouse. Film/TV credits include "Cold Case", "It Is Written" and "Thirteen Days" with Kevin Costner. Brent played Curly McLain in *Oklahoma!* at the Moonlight Amphitheater in 2010 and reprised that role the following summer in Mission Viejo. Other recent credits include the title role in *The Scarlet Pimpernel*, *Lancelot in Camelot*, Radames in Elton John's *Aida* and Franklin Shepard in *Merrily We Roll Along*. He has been a piano-playing actor in *Souvenir*, *Gunmetal Blues*, *The Buddy Holly Story*, *Striking Twelve*, and Sondheim's *Marry Me A Little*, spanning styles from classical to jazz to rock. Most recently he starred as Bob Wallace in *White Christmas* in Los Angeles. Isaiah 40:31.



Courtney Fero (Meryl) Courtney feels honored to be back at Lamb's Players! Previous San Diego roles include Hope Harcourt in *Anything Goes* and Rumpelstiltskin in *CATS* (Moonlight), Anne in *A Little Night Music* (Cygnet) and Luisa in the *Fantasticks* (Lamb's Players). But, her most favorite role to date is being married to the amazing Anton Fero. Proud graduate of UC Irvine's BFA program. She wants to thank her family for their support and God for his greatness and undeserved blessings.



Kyrsten Hafso (Carol, Assistant Choreography) Kyrsten is thrilled to be returning to Lamb's after being in last year's *Joe vs The Volcano*. San Diego credits include: *Sweeney Todd* (Moonlight), *A Christmas Carol* (Intrepid Shakespeare), *King O' the Moon* (North Coast Rep), *Rebels* (Reading, The Old Globe), *Joseph... Dreamcoat* (Welk Resort Theatre), *Spring Awakening* (American Rose Theatre), *Into the Woods*, *A Class Act*, *The Musical of Musicals: The Musical!*, and *Birds of Paradise* (SDSU). Kyrsten earned her MFA in Musical Theatre from San Diego State University and her BA in Vocal Performance from Whitworth University. Special thanks to Kevin, her husband-to-be!



Patrick Duffy (Marty, Sound Design/Audio Master) has most recently been seen on stage in *The Book of the Dun Cow*. Other stage credits here include *Smoke on the Mountain '10 & '04*, *Festival of Christmas '08*, *The Voyage*

Inheritance, An Ideal Husband, Cold Comfort Farm, South Pacific, and Rehearsal for Murder (which he also stage managed and sound designed). As a resident Sound Designer, his sound credits here at Lamb's are MIXTAPE, Pump Boys & Dinettes, Godspell, Boomers, The Fantasticks, The Light in the Piazza, Joseph '07, American Rhythm '06 at the Lyceum, The Secret Garden, and Enchanted April. When not on stage or designing, he can be found building sets or as Lamb's Audio Master. Patrick is thankful for all His blessings in his life, and wishes you the same. Thanks for coming by, enjoy!



Harley Magsino (Bass) is pleased to be back at Lamb's after performing in MIXTAPE last year. He received his Masters in Jazz Performance at San Diego State University in 2008. He has been active in the San Diego music scene for 15 years performing shows, clinics, and seminars on bass and guitar. He is currently finishing up his first solo album of

original composition featuring local young lions Joshua White and Charles Weller. Local credits: musicals with Lyceum Theater (Zoot Suit), North Coast (Tom Foolery), Moonlight Theater (Footloose), and SD Junior Theater.



Tom Versen (Percussion) is thrilled to be working with the amazing cast and crew of *Pete 'n' Keely*. (NCRT) Back to Bacharach and David, Jacques Brel, I Love You Because, Spelling Bee, Dames at Sea. (San Diego Rep) Respect, John Doe the Musical, Six Women with Brain Death, Always Patsy Cline, Bessie's Blues, Menopause the Musical, (LPT) Music Man,

Boomers, The Secret Garden, The Mysteries of Edwin Drood. (SMT) - Smokey Joe's Cafe, (Off Broadway) - Suds. Thanks to all of you who support the arts, and special thanks to my friends and family. Enjoy the show...<http://www.tandtcreative.com/>



Kerry Meads (Director) wears many hats as actor, director, and playwright. Kerry is the director of LPT's Educational Outreach. On staff at LPT since 1976, she now serves as LPT's Associate Artistic Director. As resident playwright, her work includes Boomers, American Rhythm, Dracula, My Asparagus Is Growing Fine and LPT's annual Festival of Christmas. Her

directing credits include *Guys & Dolls*, *Trying*, *An Ideal Husband*, *Pretty Fire*, *Thunder At Dawn*, *Private Lives*, *The Boys Next Door*, *Amadeus*, *Beau Jest*, *The Foreigner* and *You Can't Take It With You*. As a performer she has

been seen in such productions as *The Great Divorce*; *Quilters*; *Tartuffe*; *Godspell*; *She Loves Me*; *A Woman of No Importance*; *You're A Good Man, Charlie Brown*; *Till We Have Faces*; *Pump Boys and Dinettes*; *Into The Woods*; *Hello, Dolly!*; *Boomers*; *The Hit*, *Leaving Iowa*, *Harvey* and *The Music Man*.



Jon Lorenz (Musical Director/ Assistant Director) Actor, Director, Composer, Music Supervisor. LPT Resident Artist: *Amadeus*, *Voysey Inheritance*, *Inspector Calls*, *Winslow Boy*, *Detective Story*, *Hamlet*, *Joseph*, *Secret Garden*, *Smoke On the Mountain*, *Chaps*, *Festival of Christmas* (12 and counting!).

Co-creator of MIXTAPE (book, musical arrangements). *Alice* (book, music, lyrics) - part of the 2005 ASCAP/Disney Musical Theater Workshop & staged at NYU in 2010. Original songs/arrangements: *Festival of Christmas 2007-12*, *Traditions of Christmas* (CCT). Score/sound design: *Ideal Husband*, *The Hit*, *Room Service*. Composes music/lyrics for youth musicals produced nationally. LPT Musical Direction/Supervision: *MIXTAPE*, *Guys & Dolls*, *Joe Vs the Volcano*, *Fantasticks*, *Hometown Christmas* and *Festival of Christmas 2007-12*. Directing: *Mix It Up*, *Athens High* (LPT), *Love's Fire*, *Scaffolding* (CSU Fullerton), *Alice*, *7 Brides for 7 Brothers*, *Annie Get Your Gun*, *Bye Bye Birdie* (CCT). Old Globe: *A Room With a View*, *Scottsboro Boys* (Music Assistant). Special Love and Gratitude to Maestro Hudson Fox and my Swell Queen Julie. "Lov-ah!"



Colleen Kollar Smith (Choreographer) LPT: MIXTAPE (co-creator), *Guys and Dolls*, *Music Man*, *The Fantasticks*, *Godspell*, *Joseph...*, *Light in the Piazza*, *Book of the Dun Cow*, *American Christmas*. Intrepid Shakespeare Company: *Midsummer the Musical*, *Cygnets Theatre: Man of La Mancha*, *Dirty Blonde*, *Private*

Lives, *Moonlight Stage Productions: Leading Ladies*, *Ring Round the Moon*, *You Never Can Tell*. USD: *Gone Missing*. Colleen will graduate this summer with a Masters in Nonprofit Leadership and Management from the University of San Diego. Favorite roles to date: wife to the remarkable Lance Arthur, and Mom to the one and only Carmen Scotland (Scottie) and the newest addition to the Smith Family Singers - Pepper Rae.



Jeanne Barnes Reith (Costume Designer) *Pete 'n' Keely* marks Jeanne's 133rd production in 22 years as an Associate Artist & Resident Designer at Lamb's. Jeanne's creative work has achieved Theatre Critics

Awards such as the Craig Noel, KPBS Patte, and Billie Awards, the most recent being a Craig Noel for *Servant of Two Masters*. Other award-winners: *An Ideal Husband*, *A Woman of No Importance*, *Till We Have Faces*, *The Boy Who Fell Into a Book*, *Joyful Noise*, *Tarantara! Tarantara!*, *Dr. Faustus*, *The Winslow Boy*, and *Metamorphoses*. In 2008 Jeanne was presented a Patte Award for her entire season of productions including *Hello, Dolly!*, *The Voyage Inheritance*, *The Hit*, *Boomers*, *The Light in the Piazza*, *Festival of Christmas: Angel's Arms* and *An American Christmas*. "Theatre is a collaborative art. The team wins awards." -Jeanne Reith



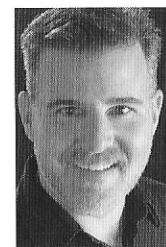
Mike Buckley (Scenic Designer) Since 1984 Mike has designed over 150 productions at Lamb's Players in addition to many shows at such companies as San Diego Rep, The Laguna Playhouse and the Old Globe/USD MFA program. Recent favorites include sets for *How To Succeed...* at the Welk, the world premier of *Joe vs. the Volcano* here at Lamb's and set

and lights for *anon(ymous)* at Southwestern College where he teaches technical theatre and design. He also recently designed the world premier of *Wrinkles at the Welk*, *Footloose* at San Diego Musical Theatre and *Night of the Iguana* at Southwestern College. Also a playwright, his romantic comedy *The Hit* had an extended run at LPT's Coronado Theatre and then the Horton Grand Theatre and his set for *The Hit* earned Mike his fifth Patte Award. As an actor, Mike has appeared in many shows at LPT. Favorites include *The Hit*, *Joseph...*, *Beau Jest*, *Johnny Pye* and *the Foolkiller*, *The Secret Garden*, and *My Fair Lady*. He also appeared in *Crazy For You* at Moonlight. TV credits include *Wicked*, *Wicked Games* as well as several commercials. Mike also designs residential interiors through his business **Weekend Makeover**.



Nathan Peirson (Lighting Designer, Director of Production) a graduate of Biola University, is Lamb's Director of Production. He has designed lights for many productions including *The Book of the Dun Cow*, *The Light in the Piazza*, *The Secret Garden*, *Enchanted April*, *Joseph and the Amazing Technicolor Dreamcoat*, *Life X 3*, *Metamorphoses*, *The*

Hunchback of Notre Dame, *Boomers*, *Till We Have Faces*, *The Great Divorce* and *Dracula*. He is also a busy actor, photographer and musician. As a performer Nate has been seen in such productions as *Tintypes*, *The Wind In The Willows*, *Alice In Concert*, *Festival of Christmas*, and *An American Christmas*.



Michael McKeon (Properties Master, Scenic Artist/Lobby Display) is an avid Photographer, Videographer, Painter, Sculptor and "maker of things." Since 2008, Michael has had the honor to work with Lamb's as a Craft Master, Scenic Designer, Scenic Artist, Properties Designer, Multimedia/Video Designer and Technician, Stage Manager and

Front of House Associate for various shows and special events at LPT. Other scenic design credits include: *Killer Joe* - San Diego Theater Critics Circle Award (Compass), *Side Man* (Diversionary), *A Midsummer Night's Dream* (Intrepid Shakespeare Company)



Maria Mangiavellano (Production Stage Manager) has stage managed the world premiere of MIXTAPE, in addition to *An Inspector Calls*; *Enchanted April*; *Godspell*; *The Glass Menagerie*; *Room Service*; *Boomers* (x 2); *The Voyage Inheritance*; *The Secret Garden*; *An American Christmas* (x 6); *American*

Rhythm; *Metamorphoses*; *Dial M For Murder*; *South Pacific*; *The Great Divorce*; 1776; *Dr. Faustus*; *The Glass Menagerie*; *Room Service*; *The Fantasticks*; *Joyful Noise*; *Hello, Dolly!*; *An Ideal Husband*; *Joseph and the Amazing Technicolor Dreamcoat*; and *Festival of Christmas*. Elsewhere she has stage managed *Travesties*, *The Importance of Being Earnest*, *Cabaret*, *Pageant*, and *Man of La Mancha* for North Coast Repertory Theatre and six productions for Moonlight at the Avo Playhouse and Moonlight Amphitheatre. She has also stage managed for San Diego Rep, La Jolla Playhouse, the Gaslamp Quarter Theatre Company, and the Berkeley Shakespeare Festival. She holds an MFA from UCSD.

SEASON

2013

IT'S NOT TOO LATE!

SEE THE
REST OF
THE SHOWS
IN 2013
FOR AS
LITTLE AS \$60!

